

12093**MAZDA CX-7**

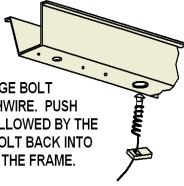
10/1/2012

GROSS LOAD CAPACITY WHEN USED AS A WEIGHT CARRYING HITCH: 3,500 LBS. TRAILER WEIGHT & 300 LBS. TONGUE WEIGHT.
*****DO NOT EXCEED VEHICLE MANUFACTURER'S RECOMMENDED TOWING CAPACITY.*****

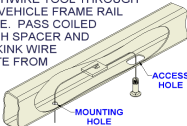
Parts List			
ITEM	QTY	PART NUMBER	DESCRIPTION
1	6	1/2-13 x 1 1/2	CARRIAGE BOLT
2	6	CM-SP40	.188 x 1.00 x 3.00" SQ. HOLE SPACER
3	6	HFN 1213	HEX FLANGE NUT
4	1	1_2 FISHWIRE	1/2" FISHWIRE

**REVERSE PULL FISHWIRE
TECHNIQUE**

ATTACH FISHWIRE TO CARRIAGE BOLT AND SLIDE SPACER ONTO FISHWIRE. PUSH THE BOLT THRU THE HOLE FOLLOWED BY THE SPACER (AS SHOWN). PULL BOLT BACK INTO POSITION, PROTRUDING FROM THE FRAME.

**FISHWIRE TECHNIQUE**

INSERT COILED END OF FISHWIRE TOOL THROUGH HITCH MOUNTING HOLE IN VEHICLE FRAME RAIL AND OUT THE ACCESS HOLE. PASS COILED END OF FISHWIRE THROUGH SPACER AND THREAD BOLT INTO COIL. KINK WIRE TO KEEP SPACER SEPERATE FROM BOLT AS SHOWN. PULL FISHWIRE, SPACER, AND BOLT THROUGH FRAME AND OUT MOUNTING HOLE. USE FISHWIRE TO GUIDE HITCH DURING MOUNTING AND PREVENT LOSS OF BOLT / SPACER INSIDE FRAME RAIL.



NOTE: SOME VEHICLES MAY FISHWIRE THROUGH END OF FRAME

PASSENGER SIDE
FRAME RAIL

ENLARGE HOLE

DRIVER SIDE
FRAME RAIL

FISHWIRE 1ST

FISHWIRE 3RD

FISHWIRE 2ND

ENLARGE HOLE

DESIGNED FOR USE WITH
BALL MOUNT # D-20 / 45520FRAME RAIL
DIRECTIONCENTER HOLE
ENLARGEMENT DIAGRAM

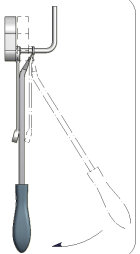
HITCH WEIGHT: 43 LBS.
 INSTALL TIME: 30 MINUTES
 INSTALL NOTES:
 - LOWER EXHAUST
 - ENLARGE HOLES (2)
 - FISHWIRE HARDWARE

**RUBBER ISOLATOR
REMOVAL DIAGRAM**

This technique can be used if an Exhaust Hanger Removal Pliers is not available.

Using a 5/8" open end wrench, slide the wrench up to the rubber isolator, cradling the hanger rod as shown. Next place the flat edge of a pry bar between the wrench and the hanger stop or hanger rod. Then simply rotate the pry bar toward the wrench to remove the rubber isolator.

Note: Using a spray lubricant or soapy water on the hanger rod and the rubber isolator helps removal.

**INSTALLATION STEPS**

- 1) Lower exhaust by removing (4) rubber isolators. (See Rubber Isolator Removal Diagram.)
- 2) Enlarge center holes to allow spacer and carriage bolts to pass through. (See Hole Enlargement Diagram.)
- 3) Fishwire 1st and 2nd carriage bolts and spacers into position as shown. (Both sides; See Fishwire Technique.)
- 4) Reverse fishwire 3rd carriage bolt and spacer into center hole. (Both sides; See Reverse Pull Fishwire Technique.)
- 5) Raise hitch into position and attach using the hex flange nuts.
- 6) Torque all 1/2" hardware to 110 lb-ft.
- 7) Install rubber exhaust isolators removed in Step 1.

PERIODICALLY CHECK THIS RECEIVER HITCH TO ENSURE THAT ALL FASTENERS ARE TIGHT AND THAT ALL STRUCTURAL COMPONENTS ARE SOUND.

Curt Manufacturing Inc., warrants this product to be free of defects in material and/or workmanship at the time of retail purchase by the original purchaser. If the product is found to be defective, Curt Manufacturing Inc., may repair or replace the product, at their option, when the product is returned, prepaid, with proof of purchase. Alteration to, misuse of, or improper installation of this product voids the warranty. Curt Manufacturing Inc.'s liability is limited to repair or replacement of products found to be defective, and specifically excludes liability for incidental or consequential loss or damage.