

Hellwig PRODUCTS.com

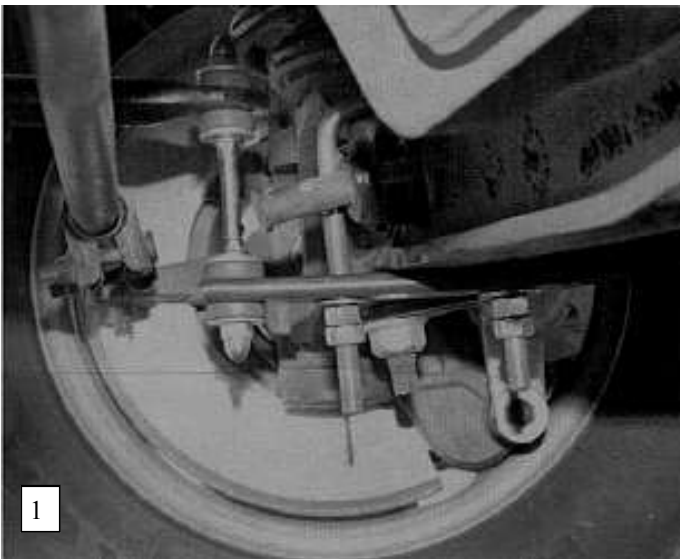
559-734-7451 800-367-5480 TechSupport@HellwigProducts.com

INSTALLATION INSTRUCTIONS FRONT STABILIZER BAR

Thank you for purchasing a quality Hellwig Product.

PLEASE READ THIS INSTRUCTION SHEET COMPLETELY BEFORE STARTING YOUR INSTALLATION

Hellwig Products Company, located in Visalia, California was founded in 1946 with solutions for load control of loaded passenger cars. The family operated company produces components for trucks, RVs, muscle cars and military vehicles. Hellwig is ISO9001 certified and is proud to develop, test and manufacture products in the USA.



TORQUE TABLE

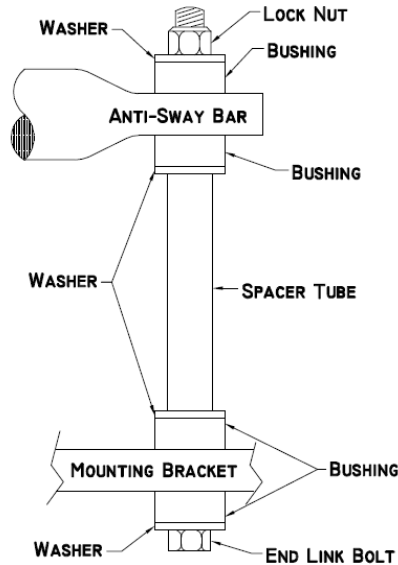
BOLT SIZE: 3/8" = 20-30 ft. lbs. : 7/16" = 35-45 ft. lbs. : 1/2" = 50-70 ft. lbs. : 9/16" = 70-90 ft. lbs

SAFETY: BEFORE STARTING YOUR INSTALLATION, BE SURE TO SET PARKING BRAKE AND CHOCK TIRES.

NOTE: TO EASE INSTALLATION AND TO PROPERLY ADJUST BAR, THE WEIGHT OF THE VEHICLE MUST BE ON THE SUSPENSION, AS IF DRIVING DOWN THE ROAD. DO NOT RAISE VEHICLE BY FRAME.

Hellwig PRODUCTS.com

559-734-7451 800-367-5480 TechSupport@HellwigProducts.com



1. Remove the factory installed from sway bar, keep the 4 frame mounting bolts as they will be reused.
2. Lubricate the inside of the d-shaped polyurethane bushing and place them on the shoulders of the sway bar.
3. Place the larger U-plate over the D-shaped bushing and then place the smaller one underneath to hold it in position and space it all the way to the top.
4. Bolt the bar to the frame using the bolts from step one through both u-plates, leave loose at this time. Make sure the sway bar's arms are above the steering before attaching it to the frame.
5. Place the U-bolt over the I-beam and attach the flat plate underneath the I-beam with the third hole underneath the hole in the end of the sway bar. Leave loose at this time.
6. Following the diagram above, assemble the end links. Tighten the end links until the bishgins just start to bulge.
7. Shift the bar so it is centered on the frame, then shift the U-bolts on the beams until the end links are straight. Torque the frame bolts and U-bolts.
8. With the wheels straight and full lock left/right, bounce the vehicle and make sure there is clearance to all undercarriage components, wires, fuel lines, wheels, etc.
9. Test drive the vehicle and check the installation again. Recheck regularly thereafter.

ATTENTION INSTALLER: BE SURE THAT THE CUSTOMER RECEIVES THIS INSTRUCTION SHEET, ALL IMORTANT NOTE CARDS AND THE WARRANTY FORM

Maintenance and Inspection:

Your Hellwig Suspension Product is built to last. However, as with all vehicle systems, it requires routine inspection. Inspect your Hellwig installation looking for secure hardware and tight fitting brackets and bushings. If you do not perform this inspection, have your professional mechanic inspect as described.