

INSTALLATION MANUAL

13613

Level of Difficulty

Moderate

Installation difficulty levels are based on time and effort involved and may vary depending on the installer level of expertise, condition of the vehicle and proper tools and equipment.

Weight Carrying Capacity

Gross trailer weight (GTW)	3,500 lbs.
Tongue weight (TW)	350 lbs.

Parts List

Item	Qty	Description
1	1	Trailer hitch
2	8	Carriage bolt, 7/16"-14 x 1-3/4"
3	8	Serrated-flange nut, 7/16"-14
4	8	Spacer, .25" x 1.00" x 2.50"

Tools Required

Ratchet	Tape measure
Torque wrench	Masking tape
Socket, 7mm	Reciprocating saw
Socket, 10mm	Tin snips
Socket, 11/16"	Exhaust stand
Exhaust isolator removal tool	Fishwire, 7/16" (includes 8 qty)

* For a tools reference guide visit curtmfg.com/trailer-hitch-installation

Product Registration and Warranty

CURT stands behind our products with industry-leading warranties. To get copies of the product warranties, register your purchase or provide feedback, visit: warranty.curtgroup.com/surveys

⚠ WARNING

Never exceed the vehicle manufacturer's recommended towing capacity.

Product Photo



NOTICE

Visit www.curtmfg.com for a full-color copy of this instruction manual, as well as helpful videos, guides and much more!

Before you begin installation, read all instructions thoroughly.

Proper tools will improve the quality of installation and reduce the time required.

This installation requires:

- Partial removal and trimming of the underbody panel and heat shield
- Temporary lowering of the exhaust
- Trimming of the lower bumper cover
- Fishwiring

Periodic inspection of the trailer hitch should be performed to ensure all mounting hardware remains tight and structural components are secure.

To help prevent damage to the product or vehicle, refer to the specified torque specifications when securing hardware during the installation process.

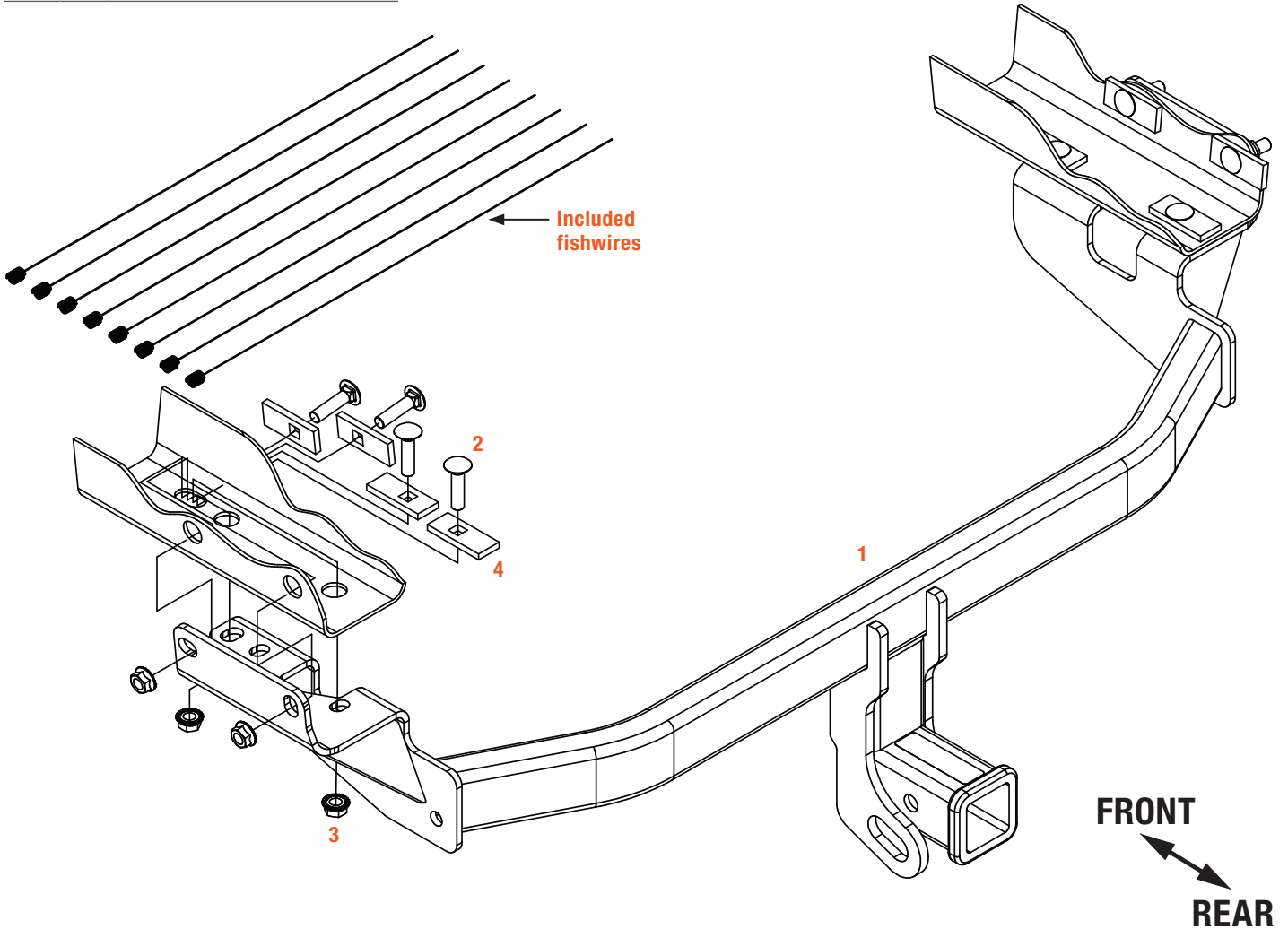
SAFETY INSTRUCTIONS

Safety glasses should be worn at all times while installing this product.

ASSEMBLY

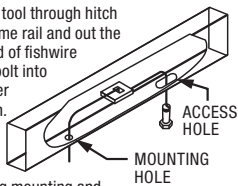
Parts List

Item	Qty	Description
1	1	Trailer hitch
2	8	Carriage bolt, 7/16"-14 x 1-3/4"
3	8	Serrated-flange nut, 7/16"-14
4	8	Spacer, .25" x 1.00" x 2.50"



FISHWIRE TECHNIQUE

Insert coiled end of fishwire tool through hitch mounting hole in vehicle frame rail and out the access hole. Pass coiled end of fishwire through spacer and thread bolt into coil. Kink wire to keep spacer separate from bolt as shown. Pull fishwire, spacer and bolt through frame and out mounting hole. Use fishwire to guide hitch during mounting and prevent loss of bolt or spacer inside frame rail.



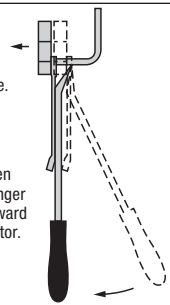
RUBBER ISOLATOR REMOVAL DIAGRAM

This technique can be used if exhaust hanger removal pliers are not available.

Using a 5/8" open end wrench, slide the wrench up to the rubber isolator, cradling the hanger rod as shown.

Place the flat edge of a pry bar between the wrench and the hanger stop or hanger rod. Then simply rotate the pry bar toward the wrench to remove the rubber isolator.

Note: Using a lubricant or soapy water on the hanger rod and the rubber isolator helps removal.



Step 1

Lower the exhaust by unhooking the three (3) rubber isolators, two (2) by the muffler and one (1) towards the front of the vehicle.

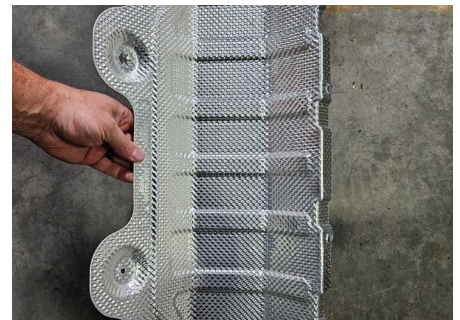
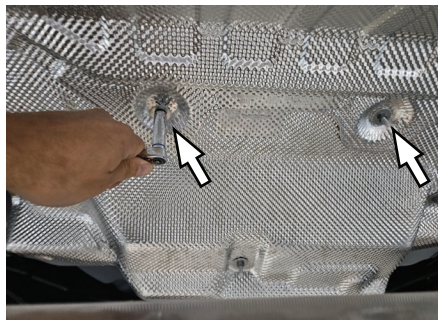
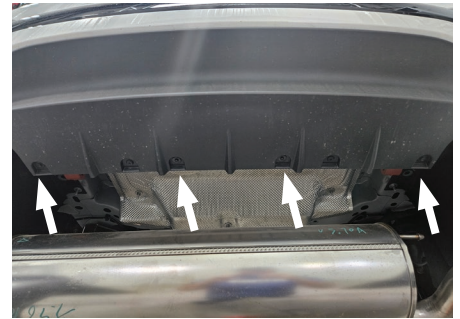
Note: Be sure to support the exhaust when removing the isolators to prevent damage.



Step 2

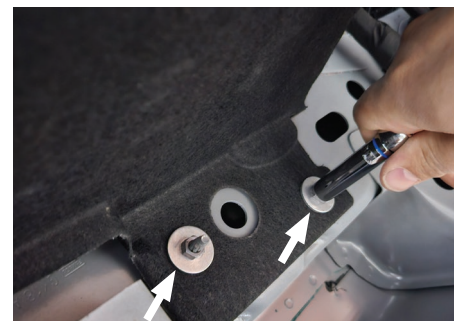
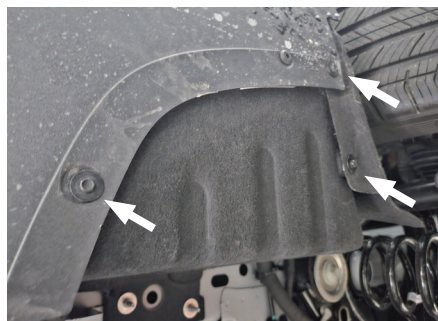
Remove the rearmost exhaust heat shield by removing the four (4) screws located in the lower bumper cover flange with a 7mm socket.

Remove two (2) washer nuts above the muffler with a 10mm socket. Set the heat shield aside for reinstallation later.



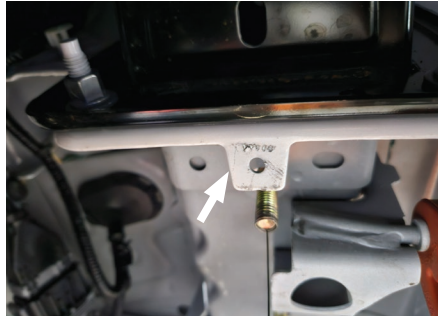
Step 3

Remove the two (2) fabric underbody side panels by removing three (3) screws from the lower edge with a 7mm socket and two (2) washer nuts from the upper edge with a 10mm socket. Place the panels to the side for reinstallation later.



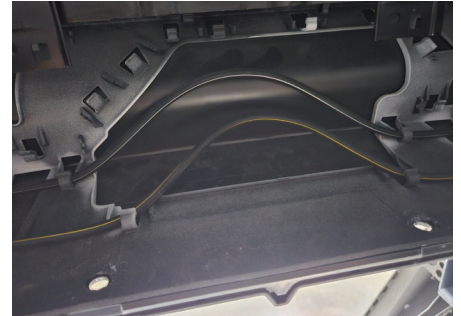
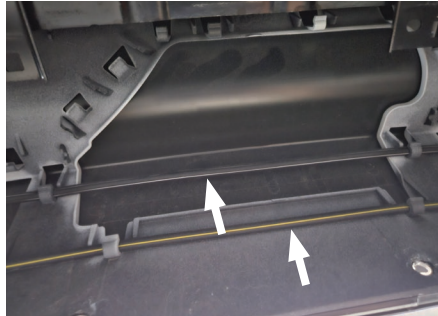
Step 4

Using a reciprocating saw or angle grinder, remove the two (2) metal tabs from the end of the frame rails so the flange is straight.



Step 5

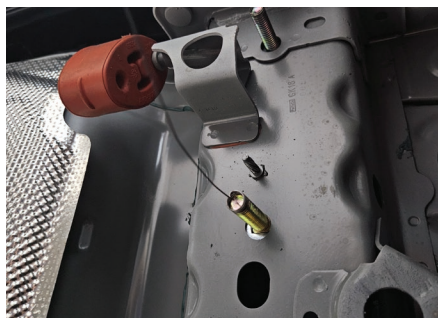
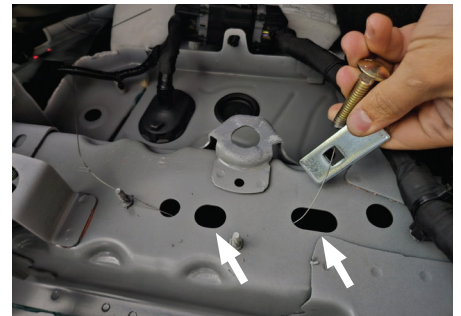
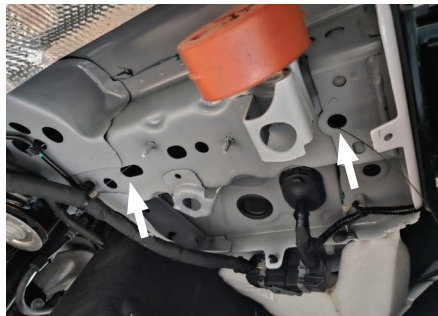
Before trimming, pull the kick sensor wires up and away from the cutting area in the bumper cover to prevent damage. Measure and mark 2" from the edge of the lower bumper cover and 1-3/4" from center on each side (3-1/2" total) for trimming. Use a reciprocating saw to trim the marked lower bumper cover area to allow clearance for the receiver hitch. Dimensions are approximate; adjust the dimensions as required.



Step 6

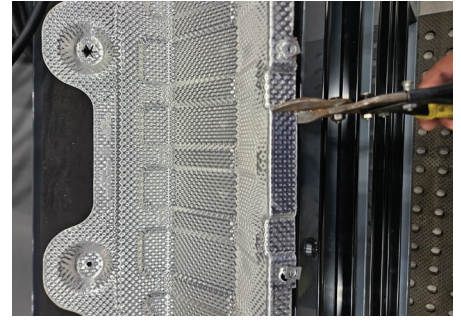
Using the supplied fishwires, fishwire two (2) carriage bolts (#2) and spacers (#4) from the large access hole into the bottom round holes in the frame rail.

Repeat on the other side leaving all four (4) fishwires attached.



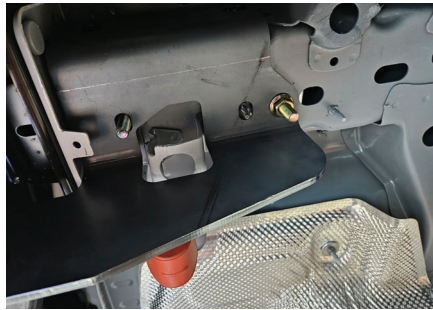
Step 7

Use tin snips to make two (2) cuts in the center of the heat shield as shown. Bend the area between the cuts further so it is bent back onto itself.



Step 8

Raise the hitch into position with the exhaust hanger mount sliding into the notch in each side plate. Thread the four (4) fishwires into the mounting holes. Remove the fishwires one by one and finger tighten the 7/16" serrated flange nuts (#3) to hold them in place.



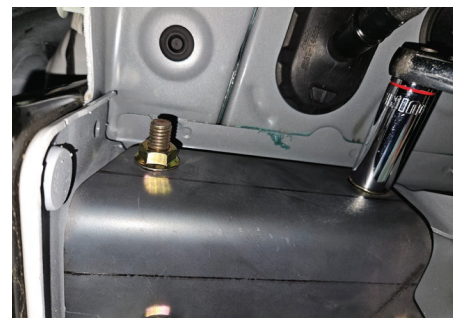
Step 9

Fishwire the four (4) remaining carriage bolts (#2) and spacers (#4) into the mounting holes on the side of the frame rail. Remove the fishwires one by one and loosely install the remaining serrated flange nuts (#3).



Step 10

Torque all 7/16" fasteners to 49 ft-lbs.



Step 11

Reinstall the exhaust heat shield, slightly bending as needed to provide clearance for the hitch receiver.



Step 12

Reinstall the fabric underbody panels either as-is or trim them slightly to fit around the hitch as needed (approx. 3-1/4" x 3/4"). Raise the exhaust back into position and reattach the exhaust isolators.



Final Installed Image



TOWING BASICS & SAFETY INFORMATION

For information on safely towing your trailer, visit curtmfg.com/understanding-towing.