

Parts List

1	Driver / left mounting bracket
1	Passenger / right mounting bracket
1	Driver / left logo plate
1	Passenger / right logo plate
8	Thread forming screw, M4 x 10mm
4	Flat washer, M6
4	Lock washer, M6
4	Socket head screw, M6 x 18mm
10	Flat washer, M8
10	Button head screws, M8 x 35mm
10	Spacers

Tools Required

Allen wrench, 5mm	Torx driver / bit, T-20
Ratchet	Torx driver / bit, T-50

Torque Specifications

	METRIC	SAE
M6 bolt	3 ft.-lbs.	
M8 bolt	7 ft.-lbs.	
M10 bolt	16 ft.-lbs.	
M12 bolt	28 ft.-lbs.	
1/4" bolt		3 ft.-lbs.
5/16" bolt		7 ft.-lbs.
3/8" bolt		16 ft.-lbs.
7/16" bolt		20 ft.-lbs.
1/2" bolt		28 ft.-lbs.

Level of Difficulty

Easy



Scan for helpful install tips

Product Image



Notes and Maintenance

Before you begin installation, read all instructions thoroughly.

Proper tools will improve the quality of installation and reduce the time required.

To protect the product, wax after installing. Regular waxing is recommended to add a protective layer over the finish. Do not use any type of polish or wax that may contain abrasives that could damage the finish.

Refer to the table to the left when securing hardware during the installation process to help prevent damage to the product or vehicle.

Step 1

Starting on the drivers side, use a ratchet and a T-50 Torx bit to remove the top 5 factory fasteners from the windshield pillar.



Step 2

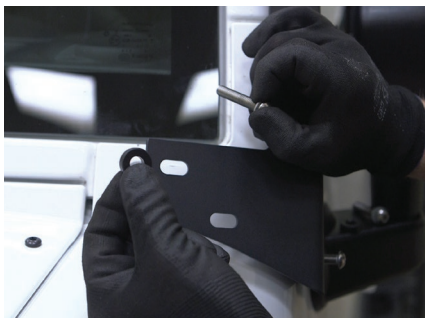
Select the driver-side mounting bracket and begin to install using the provided M8 x 35mm stainless steel button head screw, M8 flat washer, and spacer.

Once you have the spacers between the mounting bracket and vehicle, start to tighten all five screws.

Snug the hardware, but do not fully tighten.

Note: To make the installation of the spacers between the bracket and vehicle easier, apply a small amount of adhesive to the spacers and temporarily secure them to the vehicle over the mounting locations.

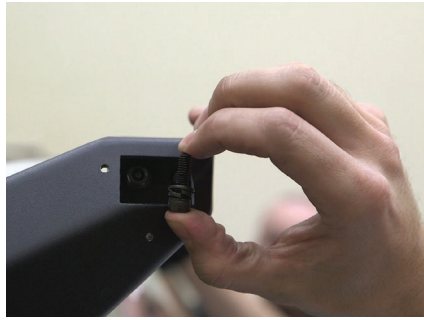
Repeat this process to attach the passenger side bracket to the vehicle.



Step 3

With help, lift the crossbar into place and fasten to the drivers side and passenger side mounting brackets using the provided M6 x 18mm socket head screw, M6 flat washer, and M6 lock washer.

Level and adjust the crossbar. Then tighten all hardware.



Step 4

Complete the installation by attaching the drivers side and passenger side logo plates using the provided M4 x 10mm thread forming screws.

Congratulations on the installation of your new ARIES roof light mounting brackets and crossbar.

With the roof light mounting brackets and crossbar installed, periodic inspections should be performed to ensure all mounting hardware remains tight.

