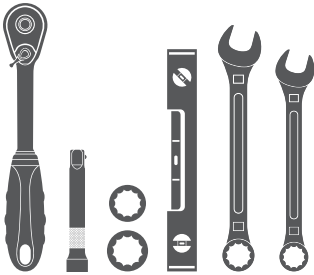


Parts List

1	Bull bar
2	Driver / left mounting bracket
2	Passenger / left mounting bracket
6	Hex bolt, 8mm
6	Flat washer, 8mm
6	Nylock nut, 8mm
4	Hex bolt, 10mm
8	Flat washer, 10mm
4	Nylock nut, 10mm

Tools Required

Ratchet	Extension
Socket, 13mm	Socket, 16mm
Wrench, 13mm	Wrench, 17mm
Level	



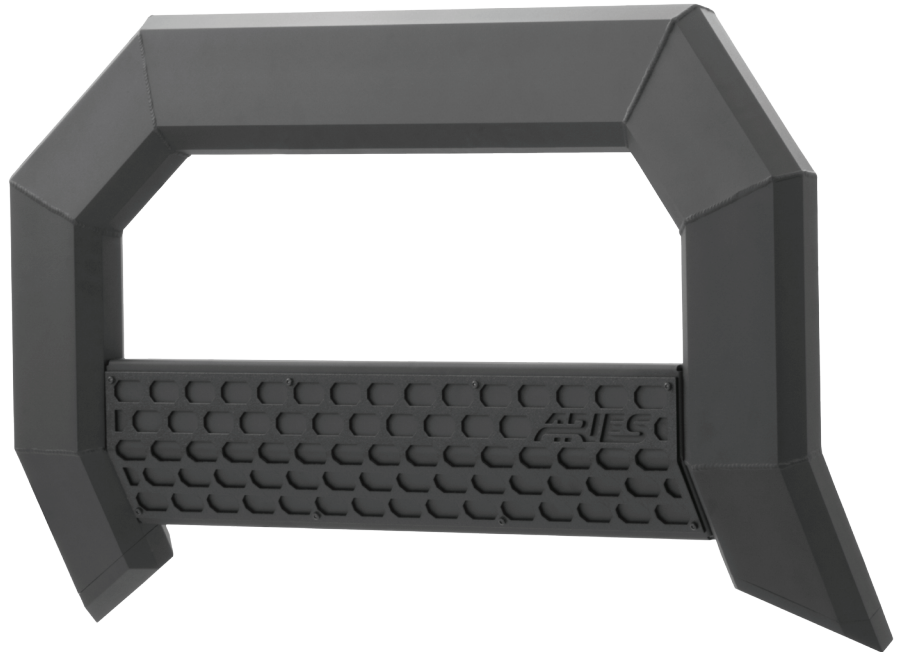
Level of Difficulty

Easy



Scan for helpful install tips

Product Image



Notes and Maintenance

Before you begin installation, read all instructions thoroughly.

Proper tools will improve the quality of installation and reduce the time required.

For black finishes, mild soap may be used to clean the product.

Step 1

Starting on the driver side, remove the two factory hex bolts securing the tow hooks to the vehicle frame.



Step 2

Attach the driver-side mounting bracket using the factory bolts previously removed from the tow hooks.

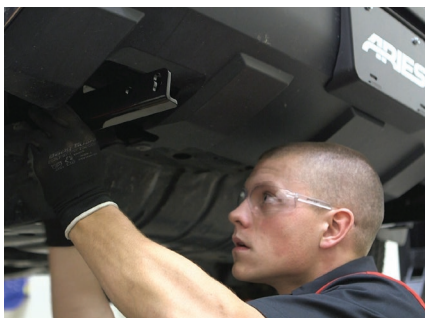
If you prefer to retain the factory tow hooks, they may be reinstalled over the bull bar bracket prior to reinstalling the factory bolts.

Snug the hardware, but do not fully tighten.



Step 3

Repeat steps 1 and 2 to attach the passenger-side mounting bracket.



Step 4

To attach the bull bar mounting brackets, lay the bull bar on a flat surface.

Insert two 8mm hex bolts in the outside rail slots and one bolt in the inside slot.

Place the driver-side bracket over the bolts and secure the bracket to the bull bar using an 8mm flat washer and 8mm nylon lock nut.

Snug the hardware, but do not fully tighten.



Step 5

With help, lift the bull bar into place and align the mounting tabs on the outside of the mounting brackets.



Step 6

Insert a 10mm hex bolt with flat washer on the outside of the bracket and a 10mm flat washer and nylon lock nut on the inside.

Snug the hardware, but do not fully tighten.

Repeat this process for all mounting locations.



Step 7

Level and adjust the bull bar into the desired position and tighten all hardware.



Step 8

Congratulations on the installation of your new ARIES AdvantEDGE™ bull bar.

With the bull bar installed, periodic inspections should be performed to ensure all mounting hardware remains tight.

To protect your investment, see the 'Notes and Maintenance' section on the first page of this instruction manual.

