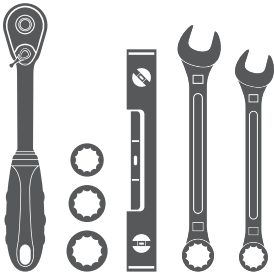


Parts List

1	Bull bar
2	Vehicle mounting bracket
2	Bull bar mounting bracket
8	Hex bolt, 8mm
8	Flat washer, 8mm
8	Nylock nut, 8mm
4	Hex bolt, 10mm
8	Flat washer, 10mm
4	Nylock nut, 10mm

Tools Required

Ratchet	Socket, 13mm
Wrench, 17mm	Socket, 16mm
Wrench, 18mm	Socket, 18mm
Level	



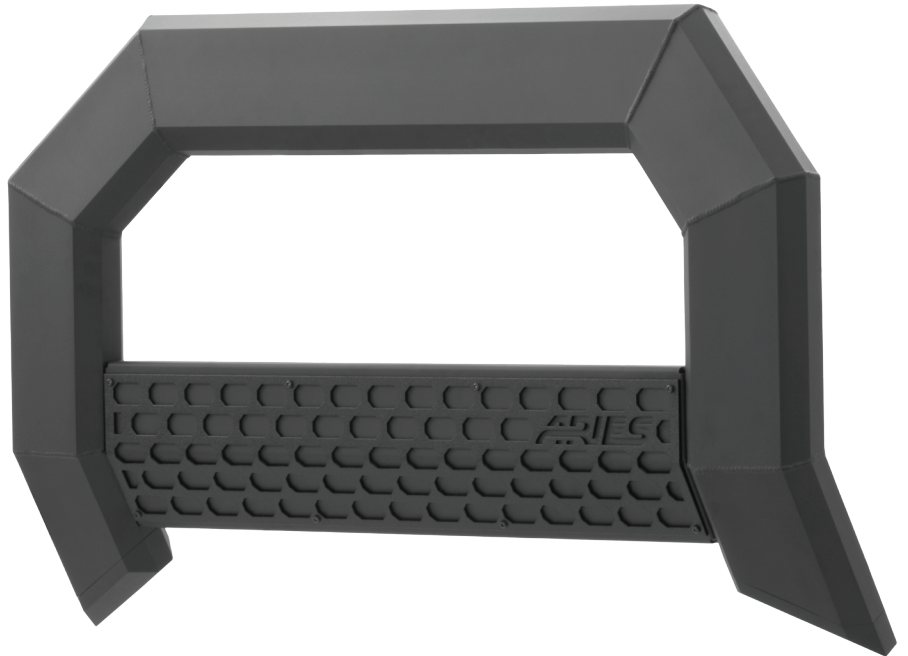
Level of Difficulty

Easy



Scan for helpful install tips

Product Image



Notes and Maintenance

Before you begin installation, read all instructions thoroughly.

Proper tools will improve the quality of installation and reduce the time required.

For black finishes, mild soap may be used to clean the product.

Step 1

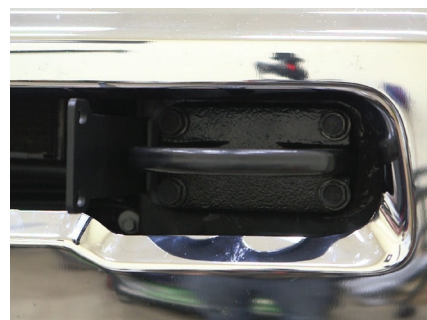
Starting on the driver side, remove the four factory hex bolts securing the tow hooks to the vehicle frame.



Step 2

Attach the driver-side mounting bracket using the factory bolts previously removed from the tow hooks.

Tighten all four factory bolts.



Step 3

Repeat steps 1 and 2 to attach the passenger-side mounting bracket.

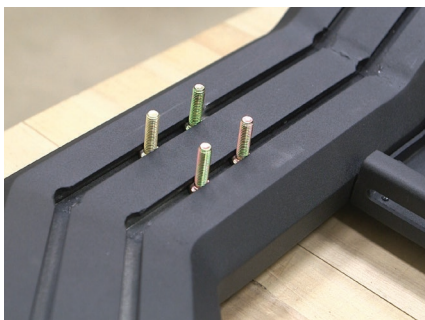


Step 4

To attach the bull bar mounting brackets, lay the bull bar on a flat surface. Insert four 8mm hex bolts, two in the outside rail slot and two in the inside slot.

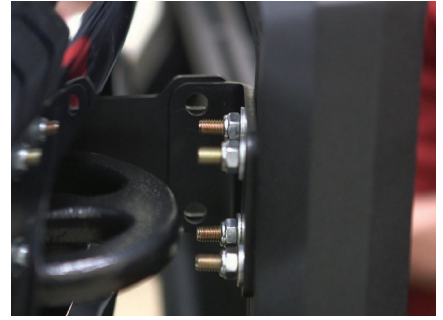
Place the driver-side bracket over the bolts and secure the bracket to the bull bar using four 8mm flat washers and 8mm nylock nuts.

Snug the hardware, but do not fully tighten. Repeat this step for the passenger-side bracket.



Step 5

With help, lift the bull bar into place and align the mounting tabs on the outside of the mounting brackets.

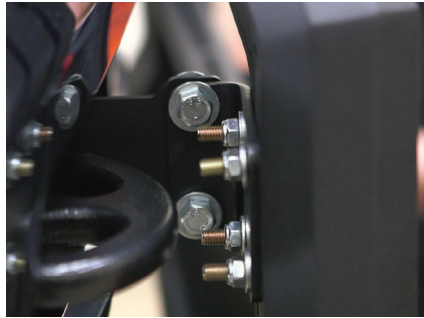


Step 6

Insert a 10mm hex bolt with flat washer on the outside of the bracket and a 10mm flat washer and nylock nut on the inside.

Snug the hardware, but do not fully tighten.

Repeat this step for the passenger-side bracket.



Step 7

Level and adjust the bull bar into the desired position and tighten all hardware.



Step 8

Congratulations on the installation of your new ARIES AdvantEDGE™ bull bar.

With the bull bar installed, periodic inspections should be performed to ensure all mounting hardware remains tight.

To protect your investment, see the 'Notes and Maintenance' section on the first page of this instruction manual.

