

# INSTALLATION MANUAL

# 4055102

### Level of Difficulty

Easy

This is the first of two manuals required to complete this installation. The second manual is included with your running boards / side steps.

### Parts List

6	VersaTrac™ mounting bracket, universal
2	VersaTrac™ mounting bracket, passenger / right, front, upper
2	VersaTrac™ mounting bracket, passenger / right, front, lower
14	Clip nut, M8*
30	Hex bolt, M8 - 1.25 x 25mm (B)
30	Lock washer, M8 (B)
30	Flat washer, M8 (B)
16	Hex nut, M8 (B)
2	Hex bolt, M10 - 1.50 x 30mm (B)
2	Lock washer, M10
2	Flat washer, M10

\* Depending on the year of the vehicle, clip nuts may or may not be needed.

(B) = Black hardware

Running boards / side steps sold separately

### Tools Required

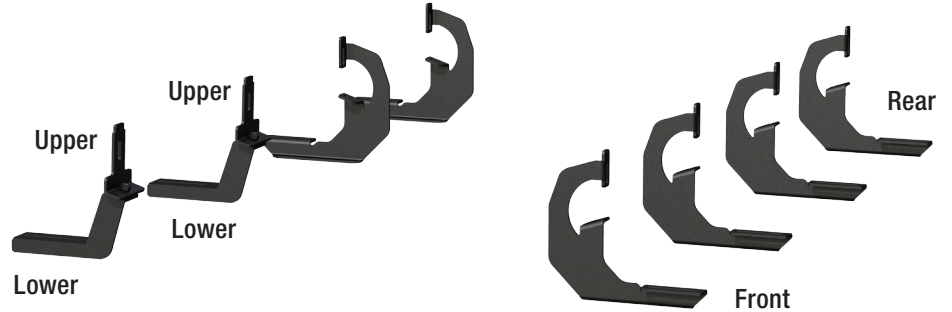
Ratchet	Socket set
Torque wrench	Socket extension
Level	--

### Torque Specifications

Metric	M6 bolt	3 ft.-lbs.
	M8 bolt	7 ft.-lbs.
	M10 bolt	16 ft.-lbs.
	M12 bolt	28 ft.-lbs.
SAE	1/4" bolt	3 ft.-lbs.
	5/16" bolt	7 ft.-lbs.
	3/8" bolt	16 ft.-lbs.
	7/16" bolt	20 ft.-lbs.
	1/2" bolt	28 ft.-lbs.

Use above torque setting unless otherwise noted

### Product Photo



### Notes and Maintenance

Before you begin installation, read all instructions thoroughly.

Proper tools will improve the quality of installation and reduce the time required.

Mild automotive detergent may be used to clean the product. Do not use dish detergent, abrasive cleaners, abrasive pads, wire brushes or other similar products that may damage the finish.

Refer to the table to the left when securing hardware during the installation process to help prevent damage to the product or vehicle.

### Product Registration

CURT Group stands behind our products with industry leading warranties. You can help us continue to improve our product line and help us understand your needs by registering your purchase by visiting:

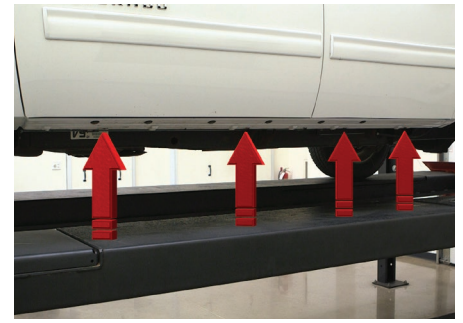
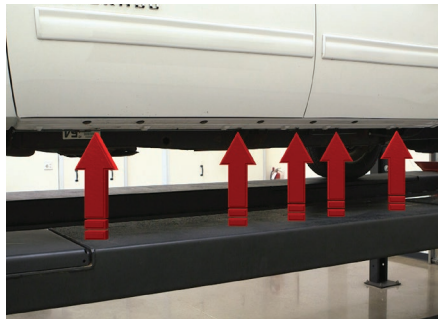
[warranty.curtgroup.com/surveys](http://warranty.curtgroup.com/surveys)

At CURT Group, customer is king. We value your feedback and we use that information to make improvements on our products. Please, take a minute and let us know how we are doing.

### Step 1

Starting on the driver side, locate the five mounting tabs along the bottom edge of the vehicle body.

This installation will use the first, second, fourth and fifth mounting tabs.



### Step 2

Starting at the front driver-side mounting location, locate the threaded hole on the inside of the body panel.

Attach the bracket to the body panel using an M8 hex bolt, lock washer and flat washer.

Snug the hardware, but do not fully tighten.

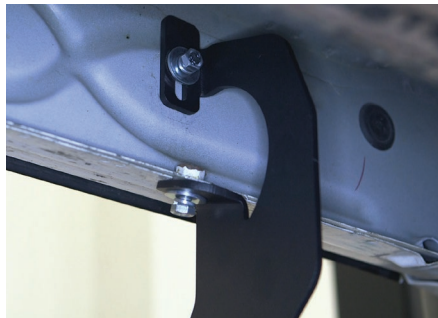


### Step 3

Secure the bracket with a second M8 hex bolt, lock washer and flat washer, using the factory-threaded nut on the edge of the body panel.

Snug the hardware, but do not fully tighten.

Repeat steps 2 and 3 to install the second bracket over the second mounting tab location from step 1.



### Step 4

Locate the fourth and fifth mounting tab locations from step 1.

Insert a clip nut through the access hole and align it over the adjacent smaller hole. Insert a second clip nut over the lower mounting tab.

Secure the bracket to the vehicle with an M8 hex bolt, lock washer and flat washer in each mounting location.

Repeat steps 1 through 4 on the passenger side of the vehicle.

**Note:** To complete the installation, refer to the manual included with your running boards / side steps.

