

Parts List

1	Driver / left side bar
1	Passenger / right side bar
5	Mounting bracket, universal
1	Mounting bracket, front driver-side
6	Bolt plate with nut
24	Flat washer, 6mm
24	Nylock nut, 6mm
7	Hex bolt, 8mm
7	Flat washer, 8mm
7	Lock washer, 8mm
6	Hex bolt, 10mm
6	Flat washer, 10mm
6	Lock washer, 10mm
6	Flat washer, 12mm
6	Lock washer, 12mm
6	Hex nut, 12mm
6	Bolt plate, stainless steel
6	Plastic bolt retainer

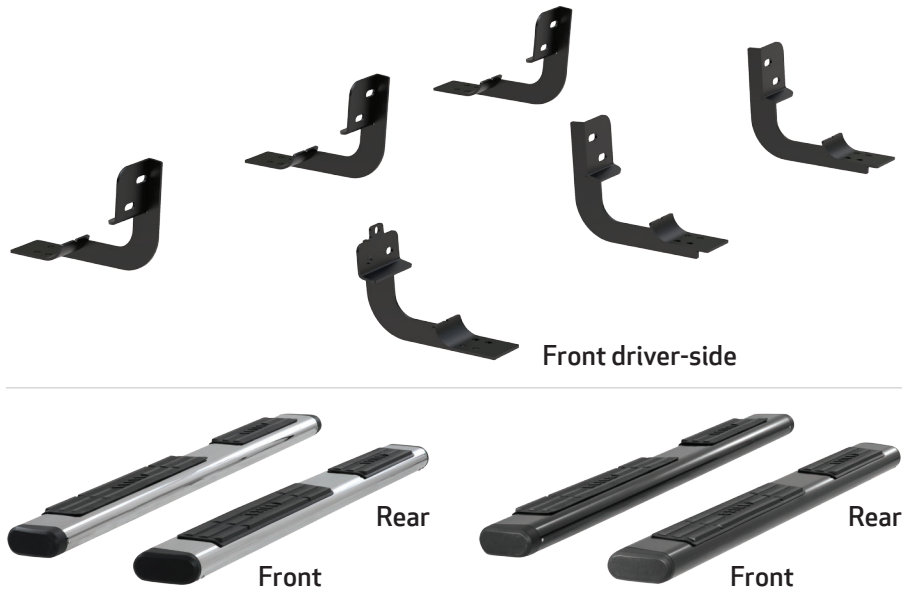
Level of Difficulty

Easy



Scan for helpful install tips

Product Image



Additional Hardware*

24	T-bolt, M8 x 1.25 - 25mm, CL8.8
24	Flat washer, M8
24	Lock washer, M8
24	Hex nut, M8 x 1, CL8.8

* Aluminum bars are supplied with additional hardware. Quantities listed are in addition to the standard supplied hardware.

Notes and Maintenance

Before you begin installation, read all instructions thoroughly.

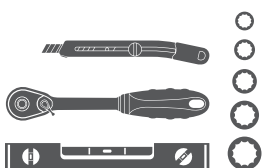
Proper tools will improve the quality of installation and reduce the time required.

To protect the product, wax after installing. Regular waxing is recommended to add a protective layer over the finish. Do not use any type of polish or wax that may contain abrasives that could damage the finish.

For stainless steel and aluminum, polish may be used to clear small scratches and scuffs on the finish. Mild soap may be used also to clean the product.

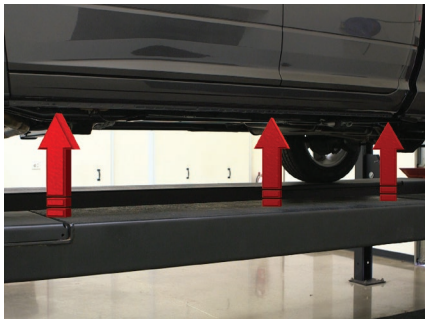
Tools Required

Ratchet	Socket, 16mm
Socket, 10mm	Socket, 18mm
Socket, 13mm	Level
Socket, 14mm	Utility knife



Step 1

Starting on the driver side, locate the three mounting tabs along the bottom edge of the vehicle body.



Step 2

Locate the front mounting point.

Using a utility knife, cut and remove the tape plug covering the third mounting point for the front mounting bracket.



Step 3

Insert a 12mm bolt plate into the opening. Slide a plastic bolt retainer over the thread of the bolt to hold the bolt in place.

Place the front driver-side bracket onto the vehicle and secure the top portion with a 12mm flat washer, 12mm lock washer and 12mm hex nut.

Snug the hardware, but do not fully tighten.



Step 4

Finish securing the front mounting bracket by inserting two 8mm flat washers, 8mm lock washers and 8mm hex bolts into the bottom holes of the mounting bracket.

Snug the hardware, but do not fully tighten.

Note: On vehicles not equipped with 8mm threaded inserts, align the 10mm nut on the 12mm bolt plate with the hole location on the bracket. Secure using a 10mm hex bolt, 10mm lock washer and 10mm flat washer.



Step 5

Locate the middle mounting point on the vehicle and a universal mounting bracket.

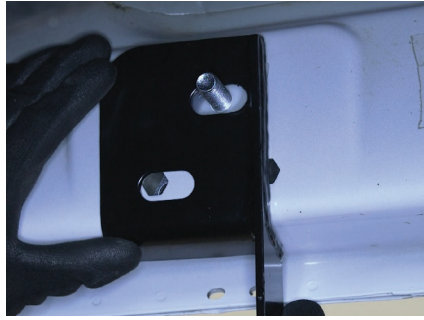
Insert a 12mm bolt plate into the top opening. Slide a plastic bolt retainer over the thread of the bolt to hold the bolt in place.

Place the mounting bracket onto the vehicle and secure the top portion with a 12mm flat washer, 12mm lock washer and 12mm hex nut.

Finish securing the middle mounting bracket by inserting an 8mm flat washer, 8mm lock washer and 8mm hex bolt into the bottom hole of the mounting bracket.

Snug the hardware, but do not fully tighten.

Note: On vehicles not equipped with 8mm threaded insert, align the 10mm nut on the 12mm bolt plate with the hole location on the bracket. Secure using a 10mm hex bolt, 10mm lock washer and 10mm flat washer.



Step 6

Locate the rear mounting point and repeat step 5 to complete the bracket installation on the driver-side of the vehicle.

Repeat step 5 to install the front, middle and rear passenger-side mounting brackets.



Step 7

Carefully place the side bar onto the brackets with the larger step pad towards the front of the vehicle.



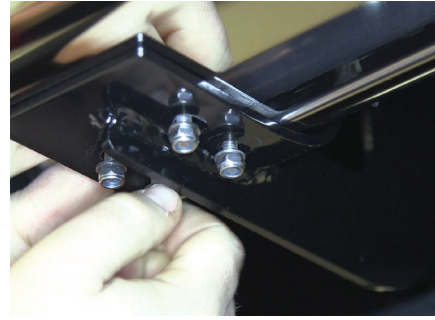
Step 8A - For Polished Stainless Steel Side Bars

Insert a bolt plate into the bottom channels of the side bar as shown.

Slide the bolt plate forward to the front bracket and insert the studs through the bracket cradle. Repeat this for the middle and rear brackets.

Secure the side bar to the brackets using twelve 6mm flat washers and hex nuts.

Snug the hardware, but do not fully tighten.



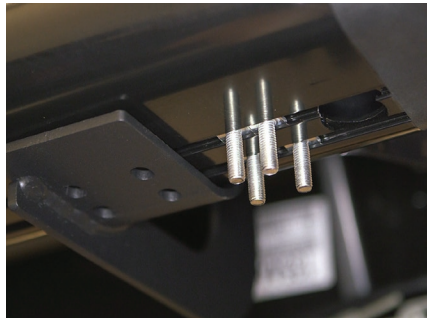
Step 8B - For Semi-Gloss Black, Aluminum Side Bars

Insert four T-bolts into the bottom channels of the side bar as shown.

Slide the bolts forward to the front bracket and insert them through the bracket cradle. Repeat this for the middle and rear brackets.

Secure the side bar to the brackets using twelve 8mm flat washers, lock washers and hex nuts.

Snug the hardware, but do not fully tighten.



Step 9

Adjust and level the side bar, centering it between the front and rear wheel wells.

With the side bar in position, it is recommended to tighten all brackets to the vehicle first, followed by the side bar connections.



Step 10

Repeat steps 7 through 9 on the passenger side of the vehicle.

Congratulations on the installation of your brand new ARIES 6" oval side bars.

With the side bars installed, periodic inspections should be performed to ensure all mounting hardware remains tight.

To protect your investment, see the 'Notes and Maintenance' section on the first page of this instruction manual.

