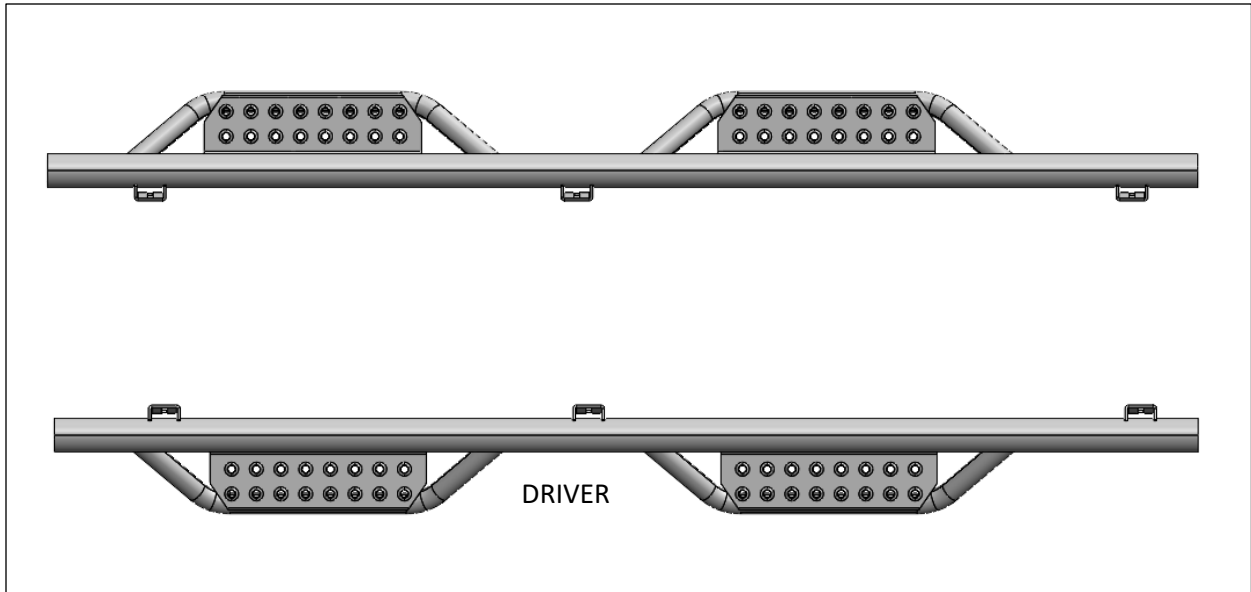


HARDWARE DESCRIPTION		QTY.
HWKT-03054X		
	10MM Carriage bolt	12
	10MM flanged nut	12
FLBW-00894X	M8-1.25 X 30MM CLASS 8.8 FLANGE CAP SCREW W/WASHER	12

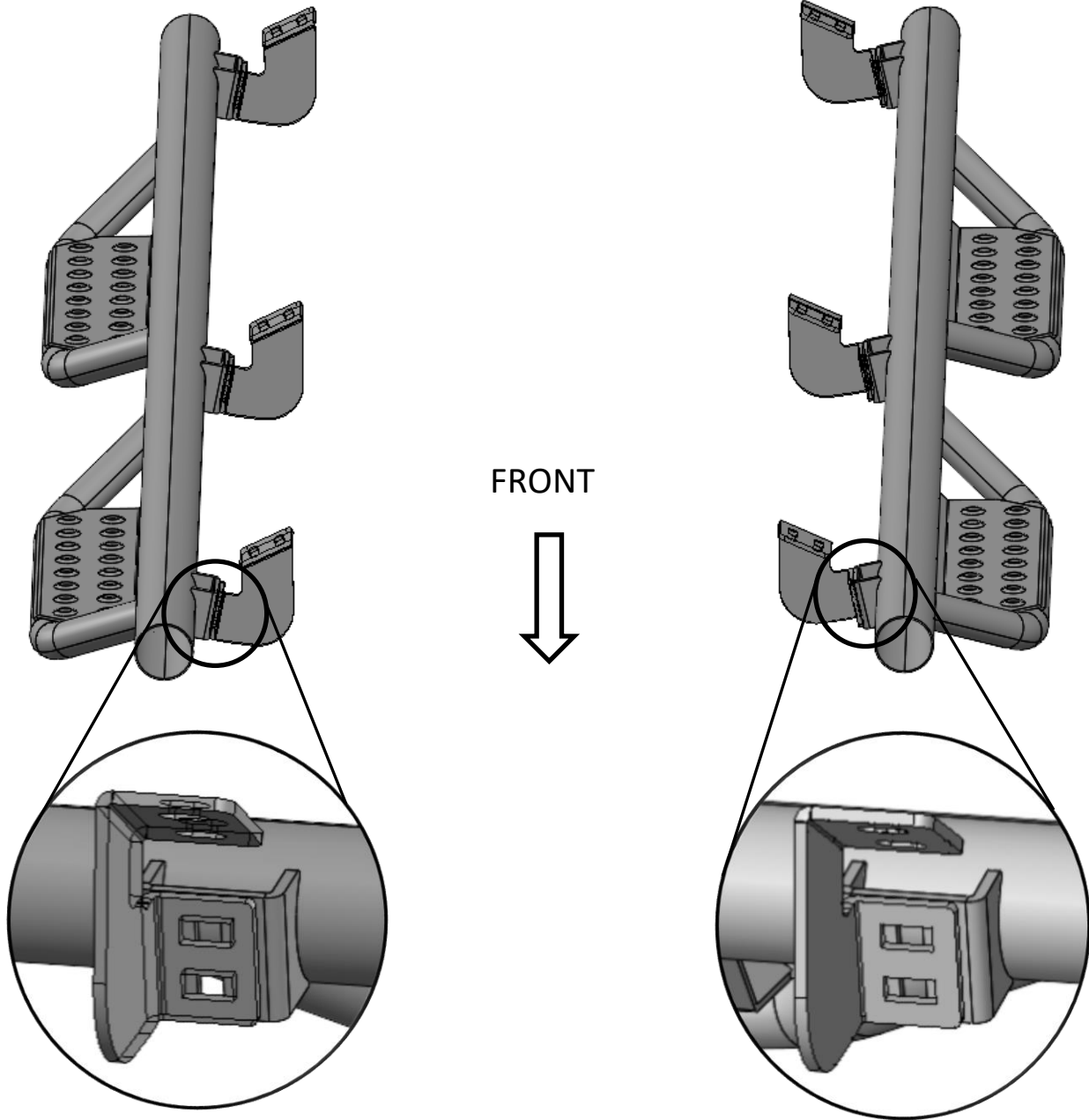


PARTS INCLUDED	QTY
DRIVER SIDE	1
PASSENGER SIDE	1
MOUNTING BRACKETS	1

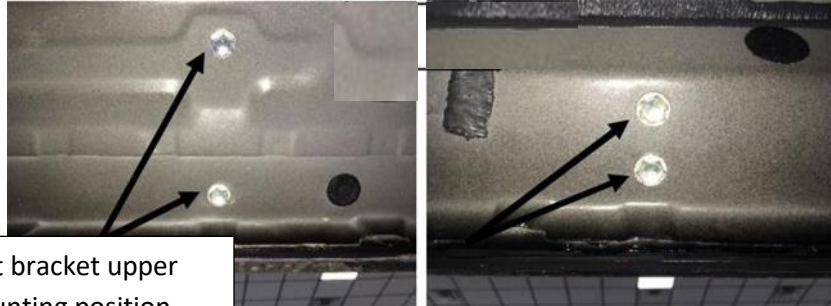
Step 1: Identify Driver side step



Step 2. Install the (x6) mounting brackets to each attachment point on the main tube using the supplied M10x25 carriage bolts, M10 hex nuts and leave loose for now. **Note the bracket orientation for driver and passenger.**



Step 2 Remove any factory hardware and discard.



First bracket upper mounting position will not be used.

Step 3: Position step up to the body of the vehicle and align the brackets up with the factory mounting locations.

Step 4: Beginning with the center bracket, start one of the M8x30mm hex bolts into the factory bolt location and leave loose. Start the second M8x30mm hex bolt in the same bracket and loosely tighten.

Step 5: Start all remaining M8x30mm hex bolts in each bracket and leave loose.

Step 6: After final positioning, start at the rear of the vehicle and tighten the lower fastener to 15-20 ft/lbs of torque. Continue this until all of the lower fasteners have been tightened, then move to the top bolt and repeat the process.

Step 7: Next, tighten brackets (x3) at the main tube.

Step 8: Repeat steps 2-7 for passenger side.

