



AUTOMOTIVE PRODUCTS, INC.

INSTALLATION INSTRUCTIONS

E-SERIES & PLATINUM OVAL STEP BARS
APPLICATION: 2010-2014 TOYOTA 4 RUNNER

<u>w/Rocker Cladding</u>	<u>w/o Rocker Cladding</u>
23-3580/85	23-3830/35
23-73580	21-3830/35
21-3580/85	

ITEM	QUANTITY	DESCRIPTION	TOOLS NEEDED
1	2	STEPBARS	13MM SOCKET
2,3	2	FRONT MOUNTING BRACKETS (2) DRIVERS SIDE, (3) PASSENGER SIDE	5MM ALLEN KEY (INCLUDED)
4,5	2	REAR MOUNTING BRACKETS (4) DRIVERS SIDE, (5) PASSENGER SIDE	12MM SOCKET
6	8	M8 X 30MM HEX CAP SCREWS	TORQUE WRENCH
7	8	M8 FLAT WASHERS	RATCHET
8	8	M8 LOCK WASHERS	
9	8	M10 BUTTON HEAD CAP SCREWS	
10	8	M10 TOOTHED LOCK WASHERS	
11	8	M10 FLAT WASHERS	

ANTI-SEIZE LUBRICANT MUST BE USED ON ALL STAINLESS STEEL FASTENERS TO PREVENT THREAD DAMAGE AND GALLING

1. Remove contents from box verify all parts listed are present and free from damage. Carefully read and understand all instructions before attempting installation.
2. Starting at the front passenger side using the 12MM socket remove the two rocker panel bracket bolts. If installing on a vehicle with side rocker cladding (side skirts). Take the passenger side front mounting bracket and place it over the factory rocker panel bracket. Attach using two M8 hex cap screws, two M8 lock washers, and two M8 flat washers do not fully tighten at this time. If vehicle is not equipped with side rocker cladding, affix the mounting bracket directly to the underside of the vehicle with the supplied M8 fasteners. **Note: The front mounting bracket cradles should face the rear of the vehicle.** Figure 1.2
3. Move to the passenger side rear and attach the passenger side rear mounting bracket as stated in step 2. **Note: The rear mounting bracket cradle should face the front of the vehicle.** Figure 3,4
4. Take the passenger side step bar and place it on the mounting cradles and align the mounting holes, attach using four M10 button head screws, four M10 toothed lock washers and four M10 flat washers.
5. Adjust step bars as needed and tighten all hardware at this time. Torque all M8 fasteners to 20-25 ft lbs and M10 fasteners to 30-35 ft lbs
6. Repeat steps 2-5 for drivers side

CARE INSTRUCTIONS

- REGULAR WAXING IS RECOMMENDED. DO NOT USE ANY TYPE OF POLISH OR WAX THAT MAY CONTAIN ABRASIVES
- STAINLESS STEEL PRODUCTS CAN BE CLEANED WITH MILD SOAP AND WATER. STAINLESS STEEL POLISH SHOULD BE USED TO POLISH SMALL SCRATCHES.
- GLOSS BLACK FINISHES SHOULD BE CLEANED WITH MILD SOAP AND WATER



Westin Automotive Products, Inc.
5200 N. Irwindale Ave. Suite 220
Irwindale, Ca. 91706

Thank You for choosing Westin products
For Additional installation assistance please call
Customer service (800) 793-7846
www.westinautomotive.com

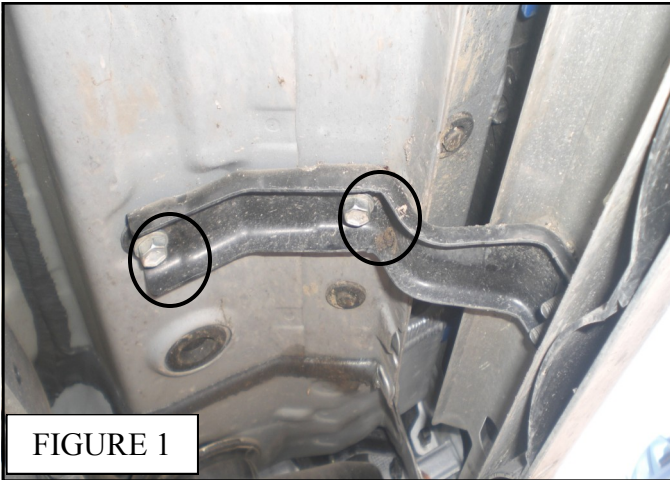


FIGURE 1

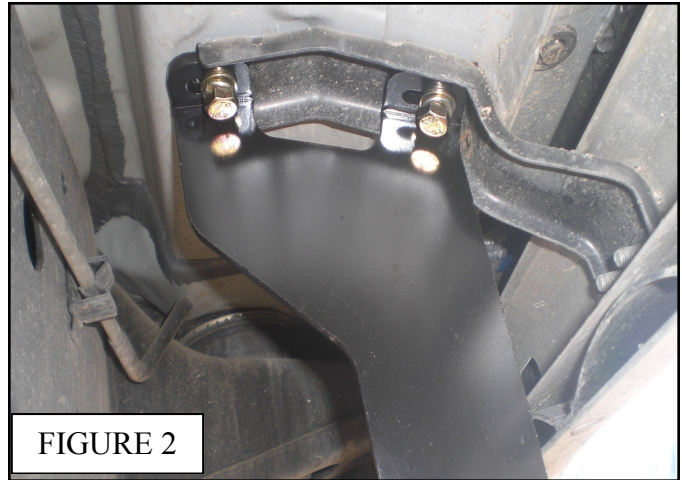


FIGURE 2



FIGURE 3



FIGURE 4



INSTALLATION COMPLETE



Westin Automotive Products, Inc.
5200 N. Irwindale Ave. Suite 220
Irwindale, Ca. 91706

Thank You for choosing Westin products
For Additional installation assistance please call
Customer service (800) 793-7846
www.westinautomotive.com