



Installation Instructions

Rugged Look Fender Flares
MERCEDES SPRINTER VAN (19-ON)
FIT-FF1025

Important: Please read instructions entirely before installing this product.

Hardware Included	QTY
MISC4718 (RUBBER SEAL W/2 DOUBLE SIDED TAPES) FRONT FF APPLICATION.	30.0 FT.
PUSH-ON BARREL NUT (M5 X 0.8)	4
SCREW (M5 X 0.8 X 45.0MM)	4
BLACK SPACER - SHORT	2
BLACK SPACER - LONG	2

Hardware Included	QTY
U-CLIPS – SMALL - FRONTS	8
U-CLIPS – LARGE - REARS	10
CLIP WITH "X" STAMP	2
TORX HEAD SCREW	2
ALCOHOL TOWELETTE	4

Ensure that both left and right hand front Fender Flares suit the profile of the vehicle. Note the areas where the Fender Flares come in contact with the vehicle. NOTE: Before fitting Fender Flares remove any moldings, strips or existing flares from the wheel arch. If there is a body side molding, mark where the molding is to be cut, alternatively the Fender Flare can be cut to go around the molding. Be sure to allow enough room for the extrusion. **No drilling of vehicle is required for Bolt-On Look Fender Flares. This is a non-drill product.**

***PRIOR TO ANY PAINTING & INSTALLATION, PRODUCT SHOULD BE THOROUGHLY INSPECTED FOR ALL COMPONENTS LISTED ABOVE. PRODUCT SHOULD ALSO BE TEST FITTED PRIOR TO ANY PAINTING & INSTALLATION. PLEASE CONTACT EGR IF YOU HAVE ANY FITMENT QUESTIONS AND OR MISSING COMPONENTS.**

PAINTING INSTRUCTIONS – If Fender Flares are being painted; do not install edge extrusion until painting is complete. Prior to painting, clean all surfaces to be painted using clean water and a mild detergent, do not use lacquer thinner or any solvent based products. Wipe completely dry. Best results will be achieved by wiping the areas to be painted with a tack rag just prior to painting. Most automotive paints can be applied directly to the Fender Flares, however some may require a primer (check paint manufacturer specifications). Good adhesion will be achieved without sanding. Select a paint (and primer if necessary) that is suitable for rigid plastics PMMA (Acrylic). If using a paint system that requires baking, do not expose the product to temperatures above 70°C (158°F). Do not fit the extrusion or any of the hardware to the Fender Flares until the paint is completely dry.

Installation Instructions

Rugged Look Fender Flares
MERCEDES SPRINTER VAN (19-ON)
FIT-FF1025

FRONT FENDER FLARE INSTALLATION



STEP 1:

NOTE: FRONT FENDER FLARES REQUIRE RUBBER SEAL WITH (2) DOUBLE SIDED TAPES.

Using the supplied alcohol wipes, be sure to clean the inside of the Fender Flare where the rubber seal attaches and wipe away any residue with a dry clean cloth. Attach the rubber seal (MISC4718) to the Fender Flares. Peel back 2" of the adhesive backing and position on the Fender Flare. Attach the rubber seal to the Fender Flare, peeling back a few inches at a time. Ensure pressure is used to secure rubber seal to Fender Flare edge. Attach the rubber seal along the edge of the Fender Flare that contacts the A-class of the vehicle body.

NOTE: IMAGES MAY DIFFER FROM ACTUAL PART





Installation Instructions

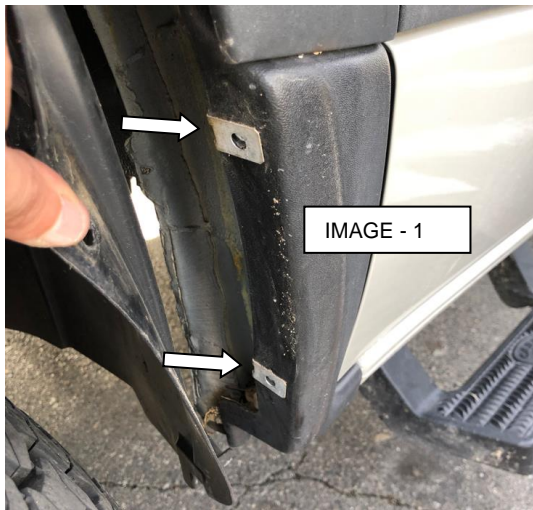
Rugged Look Fender Flares
MERCEDES SPRINTER VAN (19-ON)
FIT-FF1025



STEP 3: Clean the body areas where the Fender Flares will make contact. Ensure fenders are dry prior to install. Turn tires outward for Fender Flare installation.



STEP 4: Begin by removing factory mud flap using a T-25 TORX and a 10mm socket.



STEP 5: Pull the front wheel liner back enough to replace the factory push-on barrel nuts (IMAGE-1) with the supplied push-on barrel nuts (IMAGE-2) where noted in images above. Once installed, place wheel liner back into position.

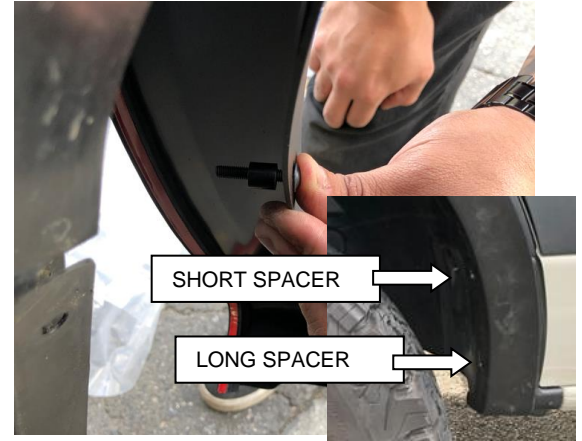
Installation Instructions

Rugged Look Fender Flares
MERCEDES SPRINTER VAN (19-ON)
FIT-FF1025



STEP 6: Place front Fender Flare on to the vehicle and position into best fit. Remove fender flare and peel back 2" inches of the red tape liner from the rubber extrusion at both ends, ensure red tape liner can be pulled from the outside of the part. Re-apply the fender flare to the vehicle. Starting at the top, begin to fasten the fender flare to the vehicle by using the supplied push-on U-Clips (Small) at the noted locations in the image above. Be sure the U-Clips snap into the slot of the fender flare.

NOTE: The circled area is for reference to STEP 7.



STEP 7: Per image above, place spacers in between the fender flare and vehicle, align the slotted hole in the fender flare with the hole of the spacer and begin to fasten with supplied Allen Head screw.



STEP 8: Starting at the front of the Fender Flare, carefully remove tape liner from the rubber seal a few inches at a time. Ensure rubber seal is not tucking into flare and sits flush neatly against the fender body. Apply forward pressure to adhere the rubber seal along the edge of entire length of Fender Flare once rubber seal liner is removed. Ensure all fixing points are tight and secure and that the rubber seal is flush and properly seated against the vehicle body. Repeat install steps for the opposite side.

Installation Instructions

Rugged Look Fender Flares
MERCEDES SPRINTER VAN (19-ON)
FIT-FF1025

REAR FENDER FLARE INSTALLATION



STEP 9: Using the supplied alcohol wipes, be sure to clean the inside of the Fender Flare where the rubber seal attaches and wipe away any residue with a dry clean cloth. Peel back 2" of the adhesive backing and position on the Fender Flare. Attach the rubber seal to the Fender Flare, peeling back the red liner a few inches at a time. Ensure pressure is used to secure rubber seal to Fender Flare edge. Attach rubber seal along all areas the Fender Flare will contact the vehicle body.

NOTE: IMAGES MAY DIFFER FROM ACTUAL PART



STEP 11: Clean the body areas where the Fender Flares will make contact. Ensure fenders are dry prior to install. Begin by removing factory mud flap using the same instruction in STEP-4.



STEP 10: Trim excess rubber seal and discard.



STEP 12: Place rear Fender Flare on to the vehicle and position into best fit. Remove fender flare and peel back 2" inches of the red tape liner from the rubber extrusion at both ends, ensure red tape liner can be pulled from the outside of the part. Re-apply the fender flare to the vehicle. Starting at the top, begin to fasten the fender flare to the vehicle by using the supplied push-on U-Clips (Large) at the noted locations in the image above. Be sure the U-Clips snap into the slot of the fender flare.

NOTE: The circled area is for reference in STEP 13.

Installation Instructions

Rugged Look Fender Flares
MERCEDES SPRINTER VAN (19-ON)
FIT-FF1025



STEP 13: Using the supplied clip marked with an "X" and Torx head screw, install at the location circled in the above image.



STEP 14: Starting at the front of the Fender Flare, carefully remove tape liner from the rubber seal a few inches at a time. Ensure rubber seal is not tucking into flare and sits flush neatly against the fender body. Apply forward pressure to adhere the rubber seal along the edge of entire length of Fender Flare once rubber seal liner is removed. Ensure all fixing points are tight and secure and that the rubber seal is flush and properly seated against the vehicle body. Repeat install steps for the opposite side.