



## Installation Instructions

Bolt-On Fender Flares  
Ram 2500/3500 (20-On)  
Without Factory Flares

FF949

**Important: Please read instructions entirely before installing this product.**

Hardware Included	QTY
Gasket	27ft
Screw Plug	6
Phillips Head Screw	6
Alcohol Towelette	4

Hardware Included	QTY
U Shape clip	2
Washers	6

Bolt Kit Included (Bolt-On look flare only)	QTY
Nuts	42
Allen Key Bolts	42

Ensure that both left and right hand front Fender Flares suit the profile of the vehicle. Note the areas where the Fender Flares come in contact with the vehicle. NOTE: Before fitting Fender Flares remove any moldings, strips or existing flares from the wheel arch. If there is a body side molding, mark where the molding is to be cut, alternatively the Fender Flare can be cut to go around the molding. Be sure to allow enough room for the extrusion. **No drilling of vehicle is required for Bolt-On Look Fender Flares. This is a non-drill product.**

**FOR RUGGED FLARES, INSTALL WILL START AT STEP 2**

**IF FLARES ARE PURCHASED PAINTED, INSTALL WILL START AT STEP 4**

**\*PRIOR TO ANY PAINTING & INSTALLATION, PRODUCT SHOULD BE THOROUGHLY INSPECTED FOR ALL COMPONENTS LISTED ABOVE. PRODUCT SHOULD ALSO BE TEST FITTED PRIOR TO ANY PAINTING & INSTALLATION. PLEASE CONTACT EGR Inc. FOR ANY FITMENT QUESTIONS AND OR MISSING COMPONENTS.**

PAINTING INSTRUCTIONS – If Fender Flares are being painted; do not install edge extrusion until painting is complete. Prior to painting, clean all surfaces to be painted using clean water and a mild detergent, do not use lacquer thinner or any solvent based products. Wipe completely dry. Best results will be achieved by wiping the areas to be painted with a tack rag just prior to painting. Most automotive paints can be applied directly to the Fender Flares, however some may require a primer (check paint manufacturer specifications). Good adhesion will be achieved without sanding. Select a paint (and primer if necessary) that is suitable for rigid plastics PMMA (Acrylic). If using a paint system that requires baking, do not expose the product to temperatures above 70°C (158°F). Do not fit the extrusion or any of the hardware



**STEP 1:** Attach the bolts and nuts to each Fender Flare using a 3/16" Allen key and a 10mm wrench/socket (wrench/socket and Allen key not supplied). Ensure inside of Fender Flares where the gasket is attached is clean, using the alcohol wipes provided. Wipe away any residue with a dry clean cloth.



**STEP 2:** Attach the included gasket to the Fender Flares. Peel back 2" of the adhesive backing and position on the Fender Flare. Attach the gasket to the Fender Flare, peeling back a few inches at a time. Ensure pressure is used to secure gasket to Fender Flare edge. Attach gasket along all areas the Fender Flare will make contact with the vehicle body.

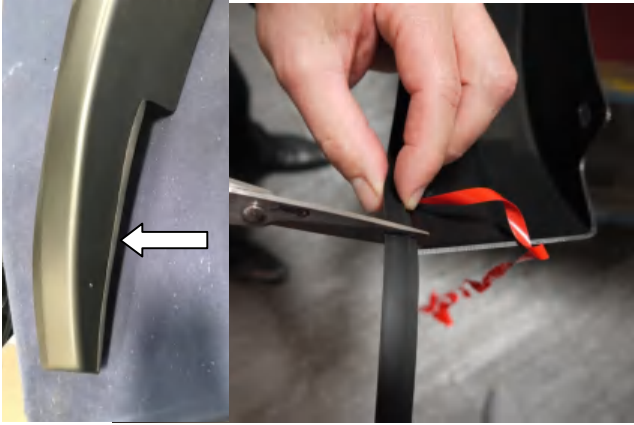
**For Technical Support/Warranty Information please call 800-757-7075  
EGR Inc., 4000 East Greystone Drive, Ontario, CA 91761**



## Installation Instructions

Bolt-On Fender Flares  
Ram 2500/3500 (20-On)  
Without Factory Flares

FF949



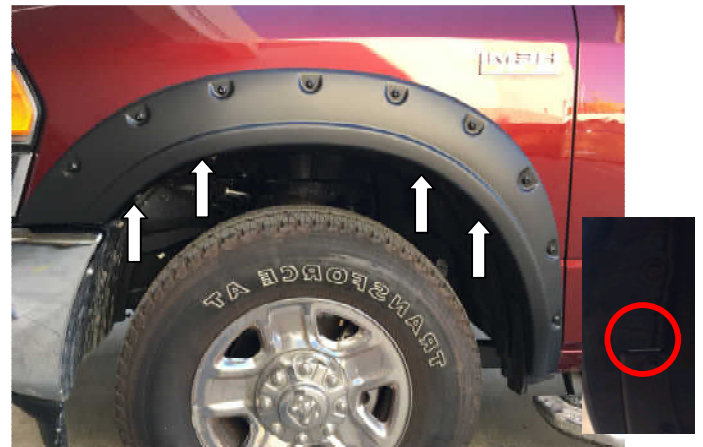
**STEP 3:** Attach rubber seal to the bottom front corner of front and rear Fender Flares per the attached image that will locate around the factory spats. Trim any excess gasket and discard.



**STEP 4:** Clean the body areas where the Fender Flares will make contact. Ensure fenders are dry prior to install.



**STEP 5:** Hold Fender Flare towards vehicle in the position of best fit. Note the (4) slots in the flare that correspond with factory installed hex screws in the wheel arch. Remove factory hex screws and retain for later re-installation. Peel back one inch of tape liner for the rubber gasket each end of the Fender Flares then fold at 45 degrees outside of the Fender Flare. Remove one inch of tape liner from the rubber gasket that locates around the factory spat.



**STEP 6:** Using the previously removed hex head screws, loosely install flares beginning at the front of the flare working to rear. Ensure the cut-out shape fits around factory mud spat against vehicle surface. Ensure the previously removed one inch of tape liner from front and rear Fender Flares is on the outside of the rubber gasket. When satisfied with position, completely secure the (4) hex screws.

For Technical Support/Warranty Information please call 800-757-7075  
EGR Inc., 4000 East Greystone Drive, Ontario, CA 91761



## Installation Instructions

Bolt-On Fender Flares  
Ram 2500/3500 (20-On)  
Without Factory Flares

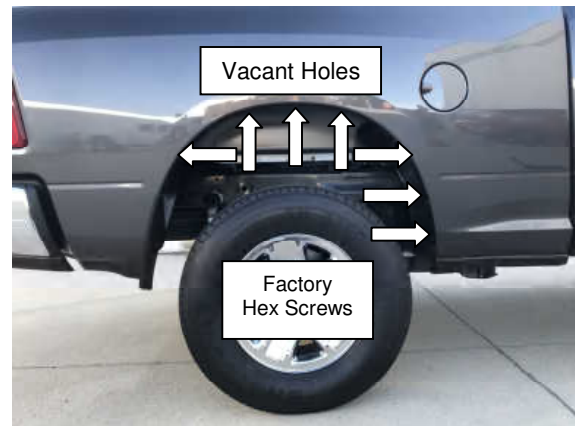
FF949



**STEP 7:** Starting at the front of the Fender Flare, carefully remove tape liner from rubber gasket a few inches at a time. Ensure rubber gasket is not tucking into flare and sits flush neatly against the fender body. Ensure all fixing points are tight and secure. Apply forward pressure to adhere the gasket along the edge of entire length of Fender Flare once gasket liner is removed. Repeat install steps for the opposite side of the Fender Flares.



**STEP 8:** Clean the body areas where the Fender Flares will make contact. Ensure fenders are dry prior to install.



**STEP 9:** Hold Fender Flare towards vehicle in the position of best fit. Note (4) slots in Flare that correspond with factory installed hex screws, and the (3) that correspond with vacant holes in wheel arch. Remove (4) screws and retain for later re-installation.

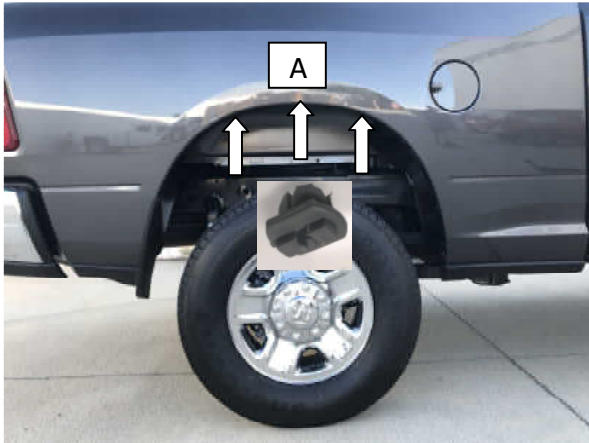
For Technical Support/Warranty Information please call 800-757-7075  
EGR Inc., 4000 East Greystone Drive, Ontario, CA 91761



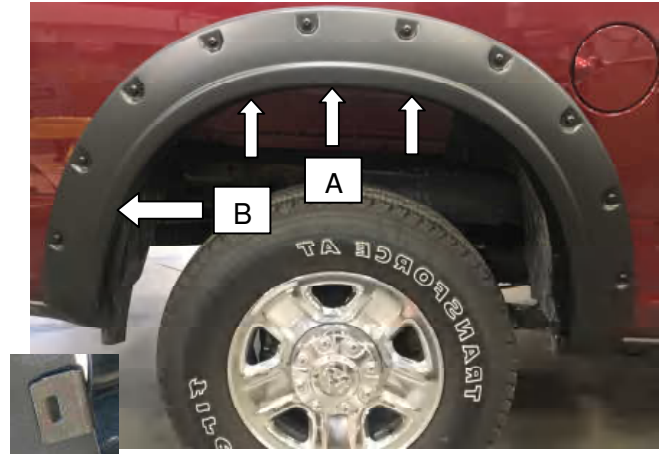
## Installation Instructions

Bolt-On Fender Flares  
Ram 2500/3500 (20-On)  
Without Factory Flares

FF949



**STEP 10:** Insert grey screw plug into vacant holes at position (A) ensuring that the raised head of the screw plug runs parallel with vehicle body.



**STEP 11:** Position Fender Flare so that the top (3) slots engage with the raised heads of the grey screw plugs. Using the provided washers and philips head screws, **loosely install** flare into position (A). Using previously removed hex screws, **loosely install** remaining (4) screws at location. Ensure cut out in flare fits around factory mud spat. When satisfied, **completely secure** the (7) locations. At location (B) install the U shape clip so that the clip slides over the inner wheel well lip and is in line with the slot in the Fender Flare. To secure the clip to Fender Flare apply inward tension on Fender Flare, position the clip so that the notch in the clip locates securely in the slot of the Fender Flare. Tighten all screw locations.



**STEP 12:** Starting at the front of the Fender Flare, carefully remove tape liner from rubber gasket a few inches at a time. Ensure rubber gasket is not tucking into flare and sits flush neatly against the fender body. Ensure all fixing points are tight and secure. Apply forward pressure to adhere the gasket along the edge of entire length of Fender Flare once gasket liner is removed. Repeat install steps for the opposite side of the Fender Flares.

For Technical Support/Warranty Information please call 800-757-7075  
EGR Inc., 4000 East Greystone Drive, Ontario, CA 91761