



**PUTCO**  
**HORNET™**  
AMBER LED STEALTH ROOFTOP STROBE LIGHT BAR

# INSTRUCTION GUIDE

— BOSS RACK & VENTURE TEC —



Congratulations on your purchase of a high quality PUTCO® product. Should you need any application or technical assistance, feel free to call us at:

**1-800-247-3974**

Monday-Friday 8:00am - 5:00pm (Central Standard Time)  
Contact your PUTCO® dealer for other quality accessories.



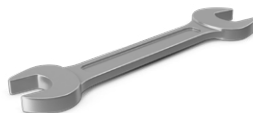
**PLEASE READ ALL INSTRUCTIONS BEFORE INSTALLATION  
AND CHECK TO SEE THAT ALL PARTS ARE INCLUDED**

## REQUIRED TOOLS

**ALLEN WRENCH**  
(size: 1/8" & 9/64")



**OPEN END WRENCH**  
(size: 3/8")



## CONTENT LIST

**QTY**

|                     |   |
|---------------------|---|
| Bracket             | 1 |
| 10-32 Bolt          | 4 |
| 10-32 Nylock Nut    | 4 |
| 1/4"-20 Square Nuts | 8 |
| 1/4"-20 Bolts       | 8 |



- 1** Remove items from packaging. Check to see if all parts from above table of contents are included.
- 2** Insert the eight square nuts into the hoop using the access cut into the T-slots. **(Figure 1)**
- 3** Using the eight 1/4"-20 bolts, attach the bracket to the hoop with the 5/32" Allen. Make sure to center the bracket before fully tightening the bolts. **(Figure 2)**  
**NOTE:** If you have purchased a 24" Hornet light, at this point proceed to the other set of instructions included. *(24" Hornet Adapter Installation: 950024I)*
- 4** Attach the Hornet light to the now mounted bracket using the 10-32 nuts and bolts and the 1/8" Allen and 3/8" wrench.
- 5** Route the wire into and through the cab to a suitable switch mounting location.
- 6** To wire the switches properly, refer to the wiring diagram in **Figure 3**.

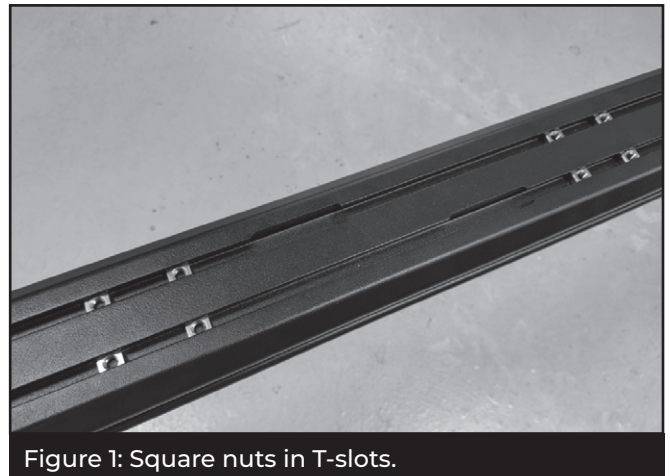


Figure 1: Square nuts in T-slots.

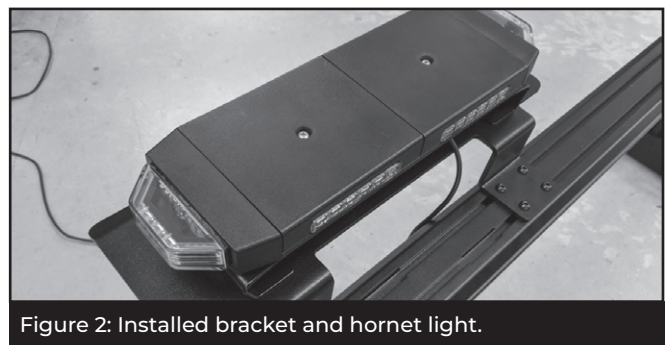


Figure 2: Installed bracket and hornet light.

### Your new Hornet is now successfully installed on your Boss Rack!

**NOTE:** When the switch is configured correctly it should function as follows: The primary switch, or the switch hooked up to the red wire, controls power to the Hornet light. This switch will turn the light on and off. To switch modes, the primary switch must be in the ON position. While the Hornet light is receiving power via the red wire, give 12V power to the yellow wire. If it does not change modes, check to make sure that the light is receiving power from the primary switch. The light will remember the mode even with the switch turned off.

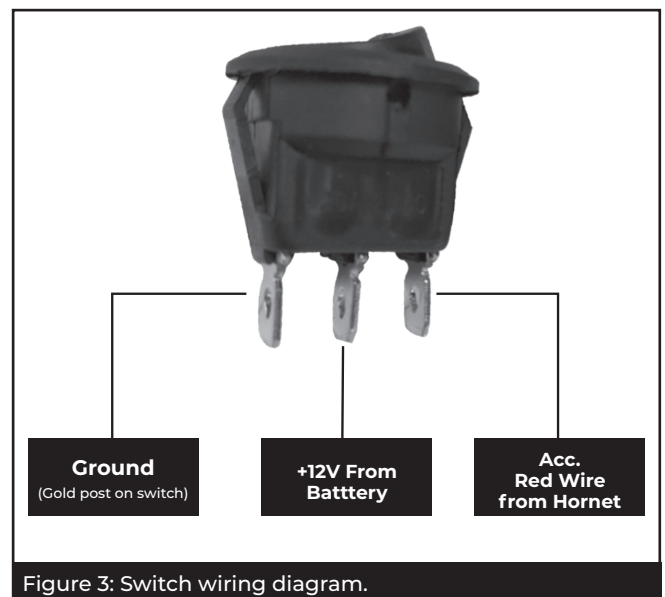


Figure 3: Switch wiring diagram.

Putco guarantees its Stainless Steel and Aluminum products against defects in workmanship and material for as long as you own your vehicle. All painted products have a 90 day warranty on the painted surface. Any defects resulting from faulty material or workmanship will be warranted by Putco and repaired or replaced at our discretion. Putco assumes no extra labor costs. Damages caused by freight carriers, improper installation, misuse, collision, or neglect will not be warranted by Putco.