



# WEATHERBEATER™ FLOOR LINERS

PT #9513

## CARE AND USE INSTRUCTIONS

---

Thank you for selecting a WeatherBeater® Floor Liner from Husky Liners. Your new front floor liners are custom molded to fit your vehicle. The liners are made to take the place of your factory floor mats. **For correct fit, it is necessary to remove the factory floor mats before installing your new floor liners.** However, do not remove the factory-installed carpeting.

Your liners are made from an engineering resin that is lightweight and extremely tough and durable. The easiest way to clean your liners is with a damp cloth or sponge. If using a cleaner, 409® or Glass Plus® work well. Use of Armor All®, Son-of-a-Gun® or similar items is discouraged as these products make the liners slick.

## INSTALLATION INSTRUCTIONS FOR YOUR TOYOTA SEQUOIA FRONT FLOOR LINERS



LEFT OR DRIVER'S SIDE



RIGHT OR PASSENGER'S SIDE

TO EASE INSTALLATION OF YOUR FRONT LINERS, MOVE BOTH FRONT SEATS TO THEIR MOST REARWARD POSITION. NEXT, REVIEW THE INSTRUCTIONS FOR REMOVING THE FACTORY FLOOR MAT RETENTION HOOKS AND REPLACING WITH THE HUSKY LINER RETENTION CLIPS. ONCE THE LINERS ARE INSTALLED, REPOSITION THE FRONT SEATS AS DESIRED.



# WEATHERBEATER™ FLOOR LINERS

PT #9513

## DRIVER'S SIDE RETENTION CLIPS

REMOVE THE EXISTING FACTORY MAT HOOK AS SHOWN IN IMAGE 1 AND IMAGE 2 BELOW. MODERATE EFFORT IS REQUIRED TO “POP” THE FACTORY HOOKS OUT. NEWER GENERATIONS OF THE FACTORY HOOK HAVE A CENTER SPREADER THAT MUST FIRST BE REMOVED BEFORE THE HOOKS CAN BE REMOVED (SEE IMAGES 3 AND 4 BELOW). ONCE THE SPREADER IS REMOVED, THE HOOK WILL POP OUT SIMILAR TO THE OLDER STYLE HOOKS. YOU CAN WATCH A YOUTUBE VIDEO OF THE HOOK REMOVAL BY ACCESSING THIS LINK-- [http://www.youtube.com/watch?v=5P-d\\_BkQ6Uc](http://www.youtube.com/watch?v=5P-d_BkQ6Uc).



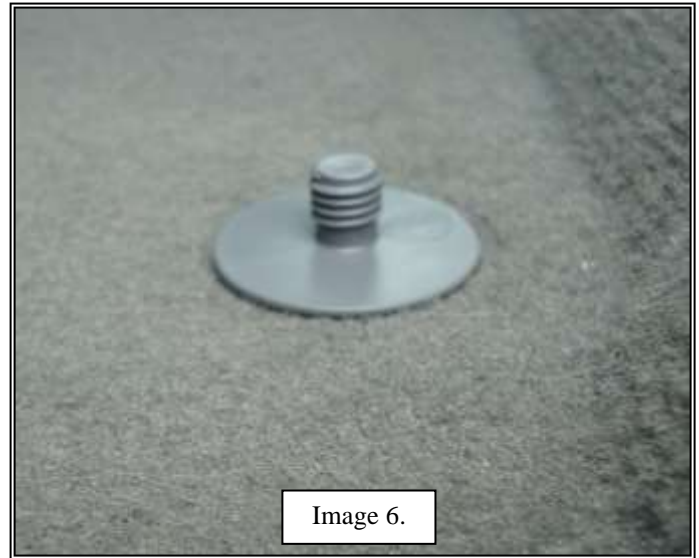
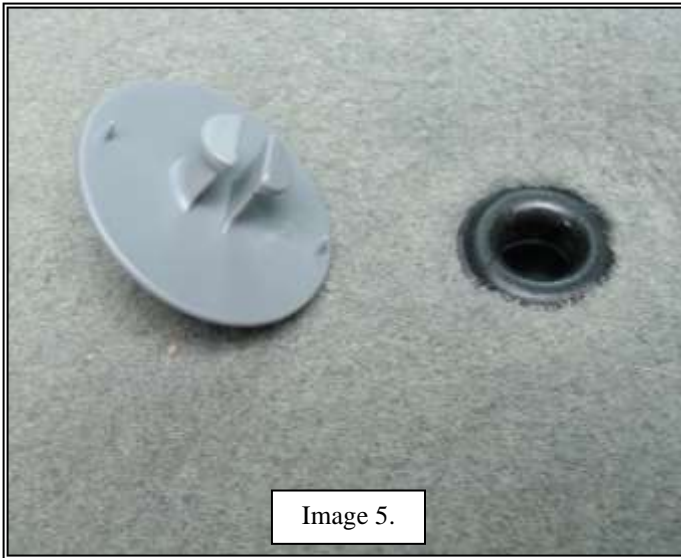
CONTINUES ON NEXT PAGE.



## WEATHERBEATER™ FLOOR LINERS

PT #9513

WITH THE FACTORY HOOKS REMOVED, UNSCREW THE TWO HALVES OF THE HUSKY® RETAINING CLIP AND INSERT THE BOTTOM HALF INTO THE EXISTING FACTORY GROMMETS LOCATION AS SHOWN BELOW IN IMAGE 5 AND IMAGE 6. THE BOTTOM PORTION WILL “SNAP” SECURELY INTO THE FACTORY GROMMET LOCATION. RETAIN THE TOP HALF OF THE CLIP FOR LATER INSTALLATION.



NOW THAT YOU HAVE THE BOTTOM PORTION OF THE RETAINING CLIPS INSTALLED, PLACE THE LINER IN THE VEHICLE TAKING CARE TO ALIGN THE HOLES IN THE LINER WITH THE THREADED PORTION OF THE BOTTOM RETAINING CLIPS AS SHOWN IN IMAGE 7 BELOW. LASTLY, SCREW THE TOP HALF OF THE RETAINING CLIPS ONTO THE TREADED POST OF THE BOTTOM PORTION, SECURING THE LINER IN PLACE AS SHOWN IN IMAGE 8.



IF YOU HAVE ANY QUESTIONS REGARDING THE INSTALLATION OF YOUR HUSKY® LINER RETAINING CLIPS, PLEASE CALL US MONDAY THROUGH FRIDAY FROM 8:00 AM – 5:00 PM CENTRAL TIME AT 800-344-8759 OR E-MAIL US AT: [contactus@huskyliners.com](mailto:contactus@huskyliners.com).

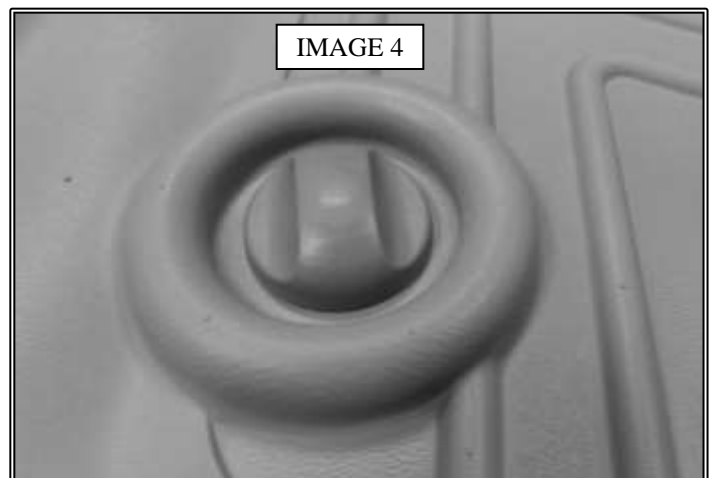
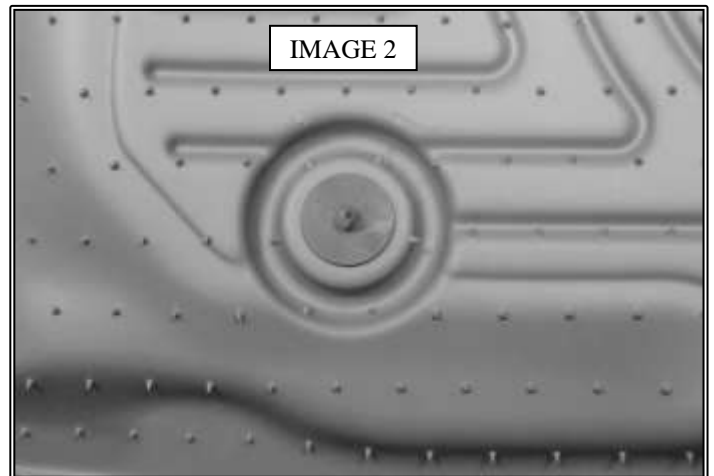
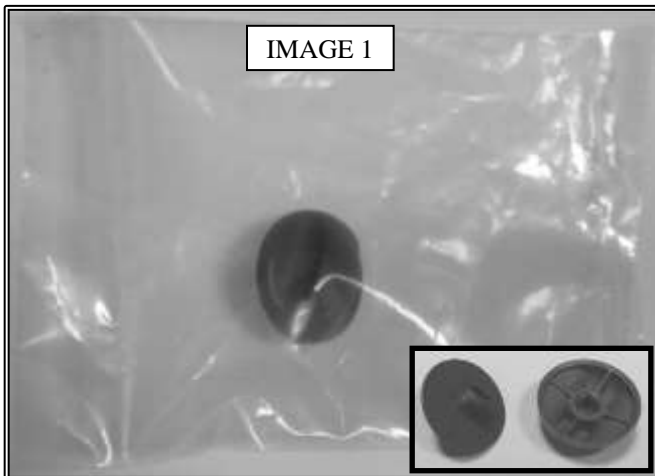


# WEATHERBEATER™ FLOOR LINERS

PT #9513

## PASSENGER SIDE RETENTION CLIP

IN YOUR PACKAGING YOU WILL FIND A COMPONENT BAG WITH A SINGLE FASTENER. THIS FASTENER WILL BE USED TO SECURE THE PASSENGER SIDE LINER IN PLACE. REMOVE THE FASTENER FROM THE BAG AND UNSCREW THE CAP FROM THE BASE (SEE IMAGE 1 BELOW). NEXT INSERT THE THREADED PORTION OF THE BASE INTO THE HOLE IN THE PASSENGER SIDE LINER, INSERTING IT FROM THE BACK SIDE OF THE LINER (SEE IMAGE 2 BELOW). WITH THIS DONE INSTALL AND POSITION THE LINER IN THE VEHICLE AND, USING A COIN, SCREWDRIVER OR SIMILAR, SCREW THE BASE OF THE FASTENER INTO THE CARPETING (SEE IMAGE 3). LASTLY, AS SHOWN IN IMAGE 4, INSTALL THE CAP ONTO THE THREADED BASE. TIGHTEN UNTIL THE CAP MEETS RESISTANCE. DO NOT OVE TIGHTEN.





## WEATHERBEATER™ FLOOR LINERS

PT #9513

### CARE AND USE INSTRUCTIONS

---

Thank you for selecting a WeatherBeater® Floor Liner from Husky Liners. Your new rear floor liner is custom molded to fit your vehicle. The liner is made to take the place of your factory floor mats. ***For correct fit, it is necessary to remove the factory floor mats before installing your new floor liners.*** However, do not remove the factory-installed carpeting.

Your liner is made from an engineering resin that is lightweight and extremely tough and durable. The easiest way to clean your liner is with a damp cloth or sponge. If using a cleaner, 409® or Glass Plus® work well. Use of Armor All®, Son-of-a-Gun® or similar items is discouraged as these products make the liner slick.

### INSTALLATION INSTRUCTIONS FOR YOUR TOYOTA SEQUOIA SECOND SEAT FLOOR LINER



TO EASE INSTALLATION OF YOUR NEW 2<sup>ND</sup> SEAT LINER, MOVE BOTH FRONT ROW SEATS TO THEIR MOST FORWARD POSITION. WITH THAT DONE, INSTALL THE LINER AS SHOWN ABOVE. ONCE THE LINER IS IN PLACE, REPOSITION THE FRONT SEATS AS DESIRED.