

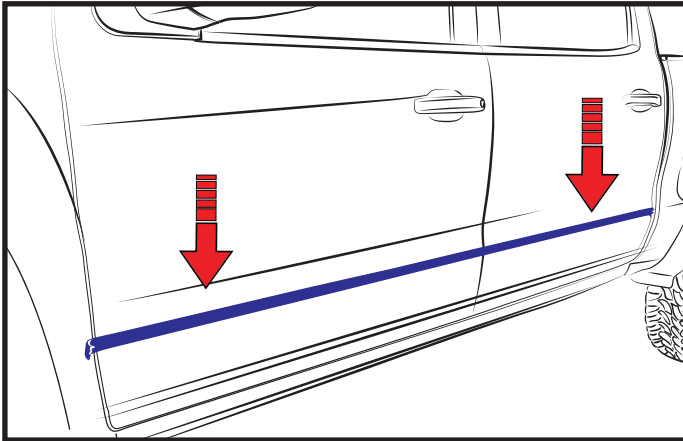


Installation Instructions

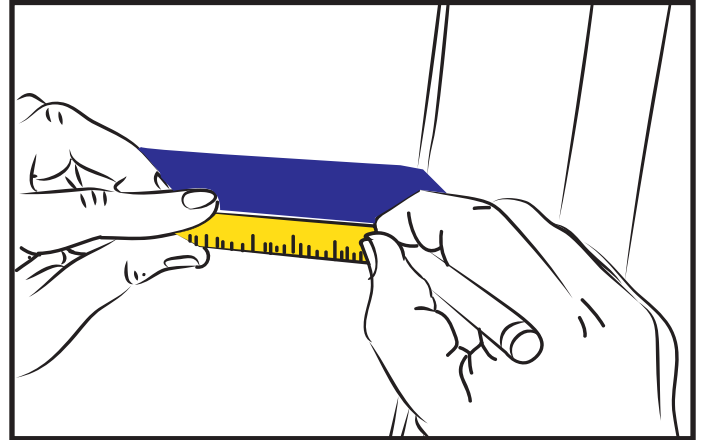
Front and Rear / Smooth Style Bodyside Moldings - Crew Cab
EGR Silverado/GMC Sierra 2019
951694

Important: Please read instructions entirely before installing product. Tape on product only no drilling required

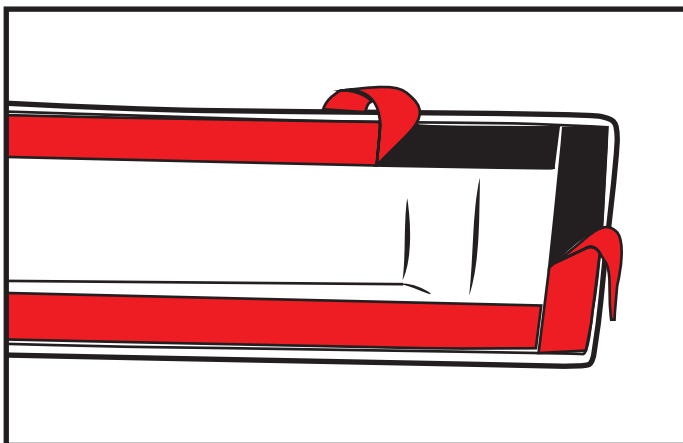
- Do not drive for four hours after install
- Do not install in weather conditions below 60 (°F)
- Do not use petroleum based solvents or abrasives
- Wash with water, detergent and soft cloth or sponge



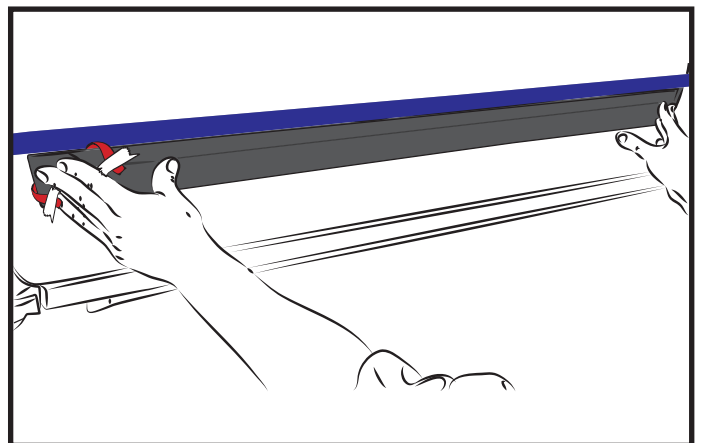
STEP 1: Clean the door areas where the Body Side Moldings will make contact with the door surface. Ensure doors are dry prior to install. Apply masking tape to front and rear doors along the top of the ridge line in the door profile. Ensure the masking tape is in a straight line to assist with aligning the Body Side Moldings to the front and rear doors.



STEP 2: Using a ruler measure in 2 cm inch from the back end of front and rear doors marking the position with a non-permanent marker on masking tape. Ensure the correct Body Side Moldings are identified prior to installing to front and rear doors. Parts are identified on the back side of Body Side Moldings.



STEP 3: Peel back approximately 2" inches of protective tape liner and fold to the outside of Body Side Moldings at a 45 degree angle along top, bottom and ends of Body Side Moldings. **Important: Do not touch the exposed surface of the tape.**



STEP 4: Aligning the rear end of Body Side Moldings with the position noted in step 2. Position the Body Side Molding so the top edge of part is running parallel along the base of the ridge line profile in the door surface. Ensure the tape liner along top, bottom and ends are on the outside edge of Body Side Moldings.

For Technical Support/Warranty Information please call 800-757-7075

EGR Inc., 4000 East Greystone Drive, Ontario, CA 91761

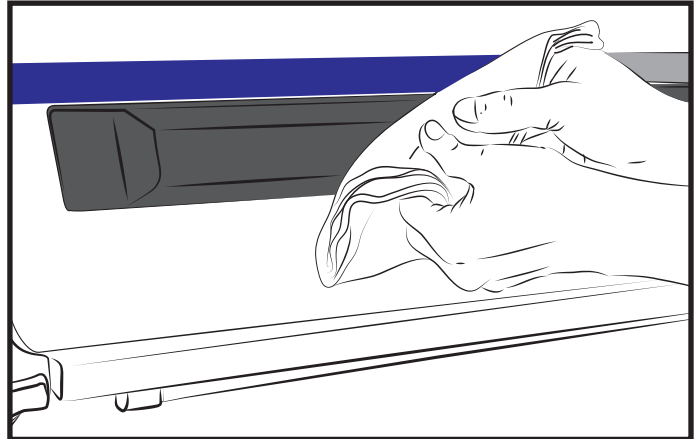
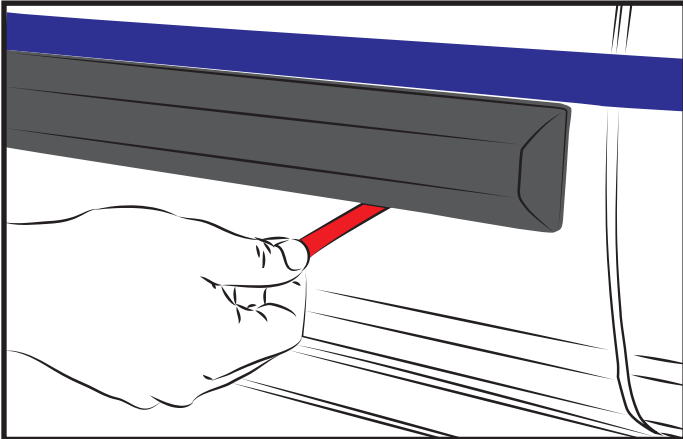


Installation Instructions

Front and Rear / Smooth Style Bodyside Moldings - Crew Cab
EGR Silverado/GMC Sierra 2019
951694

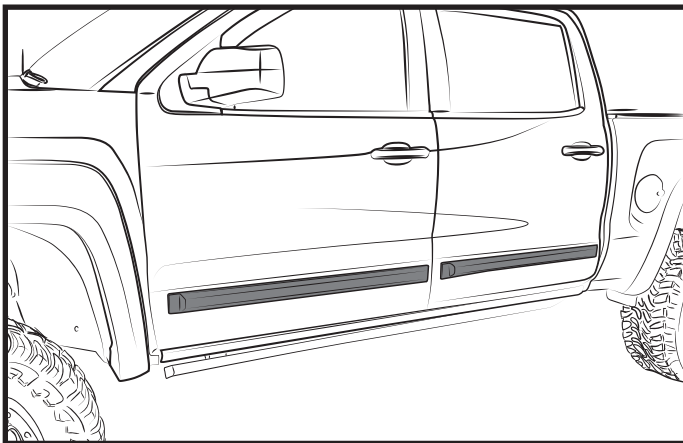
Important: Please read instructions entirely before installing product. Tape on product only no drilling required

- Do not drive for four hours after install
- Do not install in weather conditions below 60 (°F)
- Do not use petroleum based solvents or abrasives
- Wash with water, detergent and soft cloth or sponge



STEP 5: Ensure Body Side Molding is positioned correctly on the door surface before applying light pressure to the exposed tape areas. Slowly peel the remaining tape liner away by pulling on the exposed ends of liner and apply firm pressure around the attachment areas.

STEP 6: Using a clean, soft cloth, firmly rub down over the attachment areas to ensure maximum adhesion. Ensure top, bottom and ends of Body Side Moldings are rubbed down 5 times using firm pressure along tape attachment areas. Ensure no gapping is evident along top, bottom and ends of Body Side Moldings.



STEP 7: Remove masking tape from door surface. Repeat the previous steps for opposite side of vehicle to complete installation of Body Side Moldings.

For Technical Support/Warranty Information please call 800-757-7075

EGR Inc., 4000 East Greystone Drive, Ontario, CA 91761