

Installation Instructions

Front Bolt-On Look Fender Flares

TOYOTA TUNDRA (14-21)

FIT-FF997

Important: Please read instructions entirely before installing this product.

Hardware Included	QTY
Extrusion	12.0 ft
Alcohol Towelette	2
Attachment Clip	6
Spacer	4

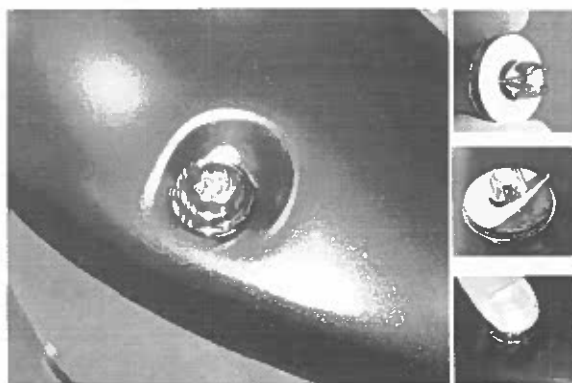
Hardware Included	QTY
Short Screw	8
Long Screw	4

Bolt Kit Included (Bolt-On look flare only)	QTY
Extruded Plastic Nuts	20

Ensure that both left and right hand front Fender Flares suit the profile of the vehicle. Note the areas where the Fender Flares come in contact with the vehicle. NOTE: Before fitting Fender Flares remove any moldings, strips or existing flares from the wheel arch. If there is a body side molding, mark where the molding is to be cut, alternatively the Fender Flare can be cut to go around the molding. Be sure to allow enough room for the extrusion. **No drilling of vehicle is required for Bolt-On Look Fender Flares. This is a non-drill product.**

***PRIOR TO ANY PAINTING & INSTALLATION, PRODUCT SHOULD BE THOROUGHLY INSPECTED FOR ALL COMPONENTS LISTED ABOVE. PRODUCT SHOULD ALSO BE TEST FITTED PRIOR TO ANY PAINTING & INSTALLATION. PLEASE CONTACT EGR IF YOU HAVE ANY FITMENT QUESTIONS AND OR MISSING COMPONENTS.**

PAINTING INSTRUCTIONS – If Fender Flares are being painted; do not install edge extrusion until painting is complete. Prior to painting, clean all surfaces to be painted using clean water and a mild detergent, do not use lacquer thinner or any solvent based products. Wipe completely dry. Best results will be achieved by wiping the areas to be painted with a tack rag just prior to painting. Most automotive paints can be applied directly to the Fender Flares, however some may require a primer (check paint manufacturer specifications). Good adhesion will be achieved without sanding. Select a paint (and primer if necessary) that is suitable for rigid plastics PMMA (Acrylic). If using a paint system that requires baking, do not expose the product to temperatures above 70°C (158°F). Do not fit the extrusion or any of the hardware to the Fender Flares until the paint is completely dry.



STEP 1: Attach the extruded plastic bolts. Peel back white tape liner from the bottom side of the extruded plastic bolt and press until it snaps into place. Ensure inside of Fender Flares where the rubber seal is attached is clean, using the alcohol wipes provided. Wipe away any residue with a dry clean cloth.



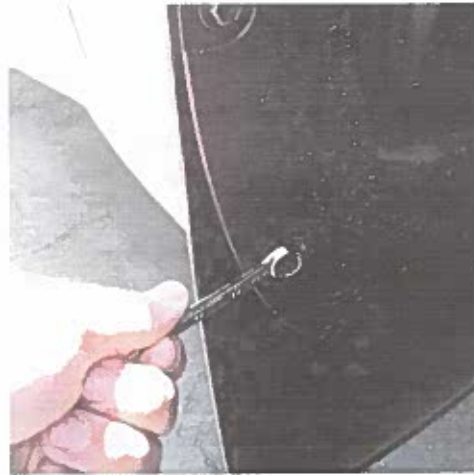
STEP 2: Attach the included rubber seal to the Fender Flares along the top leading edge where the Flare will make contact with the exterior painted vehicle body. Peel back 2" of the adhesive liner and apply the double sided tape to the inside surface of the Fender Flare, peeling back a few inches at a time and applying pressure to secure rubber seal to Fender Flare.

Installation Instructions
Front Bolt-On Look Fender Flares
TOYOTA TUNDRA (14-21)

FIT-FF997



STEP 3: Trim rubber seal at end of each Fender Flare. Save extra rubber seal for install on opposite side Fender Flare and discard any excess once both sides are complete.
IMPORTANT NOTE: Trim rubber seal



STEP 4: Using a 10mm socket / wrench remove the 3 screws from the inner area of the mud guard. Using a small flat screwdriver disengage the pin from the plug at the base of the mud guard. Remove mud guards completely and retain all components. Mud Guards cannot be installed with these Fender Flares.



STEP 5: Clean the body areas where the Fender Flares will make contact. Ensure fenders are dry prior to install. Turn tires facing outward to provide additional room and ease hardware installation per side.



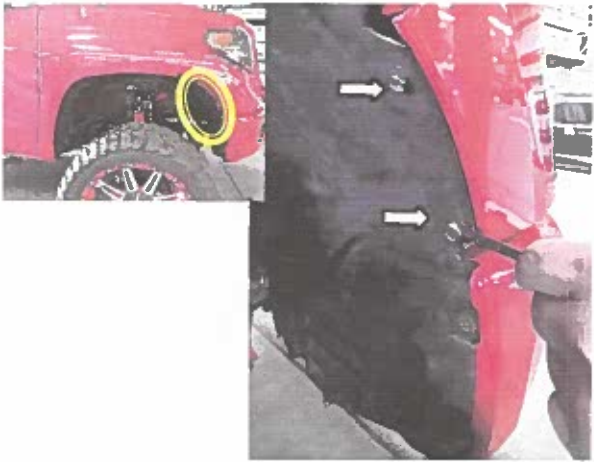
STEP 6: Hold Fender Flare on the vehicle in the position of best fit. Note where above marked slots in the Fender Flare, align with the existing screws / mounting holes in the vehicle. Make special note of "A"
Remove the Fender Flare.

Installation Instructions

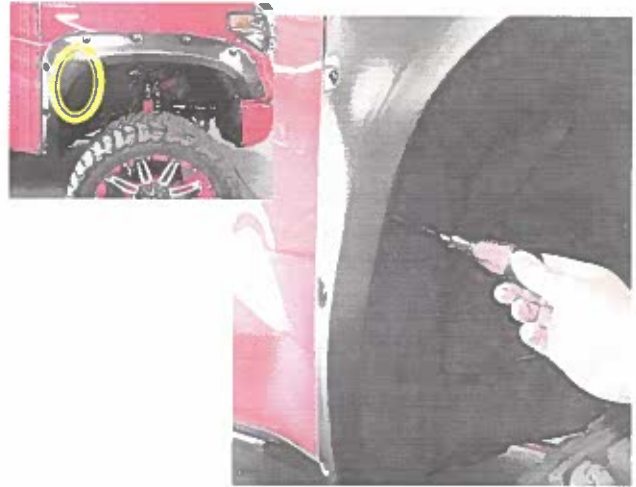
Front Bolt-On Look Fender Flares

TOYOTA TUNDRA (14-21)

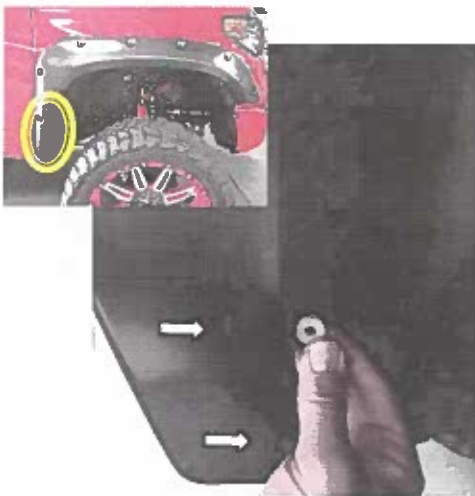
FIT-FF997



STEP 7: Using a 10mm socket / wrench, remove the 2 front screws from the inner splashguard front fascia area, retain these for later re-install.



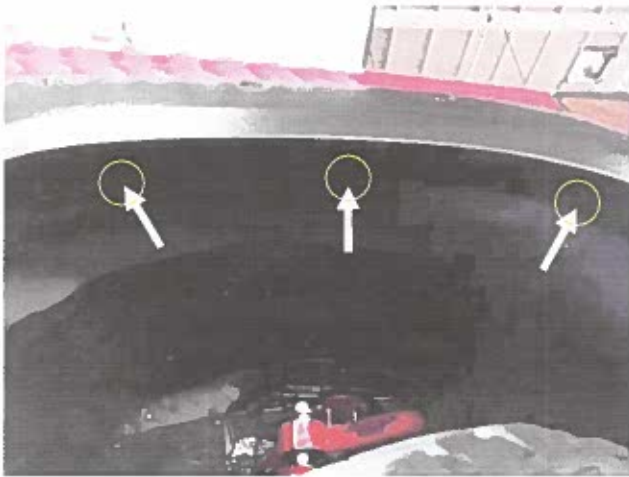
STEP 8: Place Fender Flare back on the vehicle into the position of best fit. First, loosely install provided short screw from hardware kit in the vacant "A" slot noted in Step 6., then re-install the (2) previously removed factory screws from Step: 7 using a 10mm socket / wrench. Do not fully tighten screws at this stage.



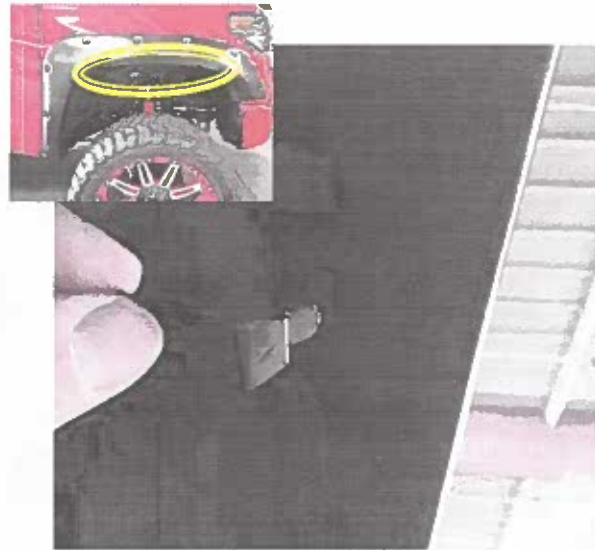
STEP 9: Working from top to bottom at the previously removed mud guard area, carefully hold and slide the supplied spacers in behind the Fender Flare to fill the gap between flare and fender. While holding the spacer, use your other hand to place the provided long screws through the slot and into the corresponding factory attachment points. Do not fully tighten screws at this stage.

Installation Instructions
Front Bolt-On Look Fender Flares
TOYOTA TUNDRA (14-21)

FIT-FF997



STEP 10: Locate the (3) remaining mounting slots on the Fender Flare as shown.



STEP 11: Secure attachment clips by sliding clip into Fender Flare slot and using the remaining short screws in the hardware kit to attach the clips into corresponding existing holes in upper inner splashguard. Do not fully tighten screws at this stage.



STEP 12: If necessary, make minor adjustments to the flare's position to achieve the best fit. Ensure rubber seal is sitting flat against vehicle. When satisfied fully tighten all screw locations, in the above order in which they were just installed. Repeat install for opposite side.

Installation Instructions

Rear Bolt-On Look Fender Flares

TOYOTA TUNDRA (14-21)

FIT-FF998

Important: Please read instructions entirely before installing this product.

Hardware Included	QTY
Extrusion	16.5ft
Alcohol Towelette	2
Spacers	6

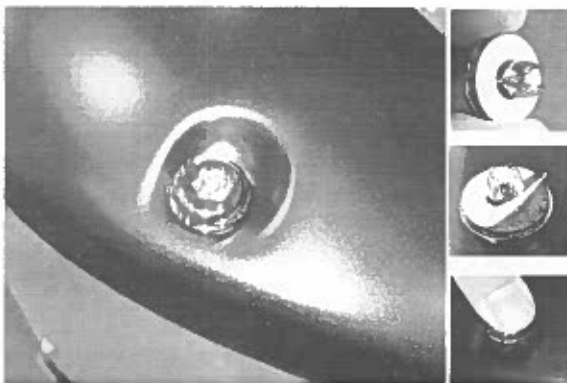
Hardware Included	QTY
Short Screw	10
Long Screw	6

Bolt Kit Included (Bolt-On look flare only)	QTY
Extruded Plastic Nuts	22

Ensure that both left and right hand rear Fender Flares suit the profile of the vehicle. Note the areas where the Fender Flares come in contact with the vehicle. NOTE: Before fitting Fender Flares remove any moldings, strips or existing flares from the wheel arch. If there is a body side molding, mark where the molding is to be cut, alternatively the Fender Flare can be cut to go around the molding. Be sure to allow enough room for the extrusion. **No drilling of vehicle is required for Bolt-On Look Fender Flares. This is a non-drill product.**

***PRIOR TO ANY PAINTING & INSTALLATION, PRODUCT SHOULD BE THOROUGHLY INSPECTED FOR ALL COMPONENTS LISTED ABOVE. PRODUCT SHOULD ALSO BE TEST FITTED PRIOR TO ANY PAINTING & INSTALLATION. PLEASE CONTACT EGR IF YOU HAVE ANY FITMENT QUESTIONS AND OR MISSING COMPONENTS.**

PAINTING INSTRUCTIONS – If Fender Flares are being painted; do not install edge extrusion until painting is complete. Prior to painting, clean all surfaces to be painted using clean water and a mild detergent, do not use lacquer thinner or any solvent based products. Wipe completely dry. Best results will be achieved by wiping the areas to be painted with a tack rag just prior to painting. Most automotive paints can be applied directly to the Fender Flares, however some may require a primer (check paint manufacturer specifications). Good adhesion will be achieved without sanding. Select a paint (and primer if necessary) that is suitable for rigid plastics PMMA (Acrylic). If using a paint system that requires baking, do not expose the product to temperatures above 70°C (158°F). Do not fit the extrusion or any of the hardware to the Fender Flares until the paint is completely dry.



STEP 1: Attach the extruded plastic bolts. Peel back white tape liner from the bottom side of the extruded plastic bolt and press until it snaps into place. Ensure inside of Fender Flares where the rubber seal is attached is clean, using the alcohol wipes provided. Wipe away any residue with a dry clean cloth.



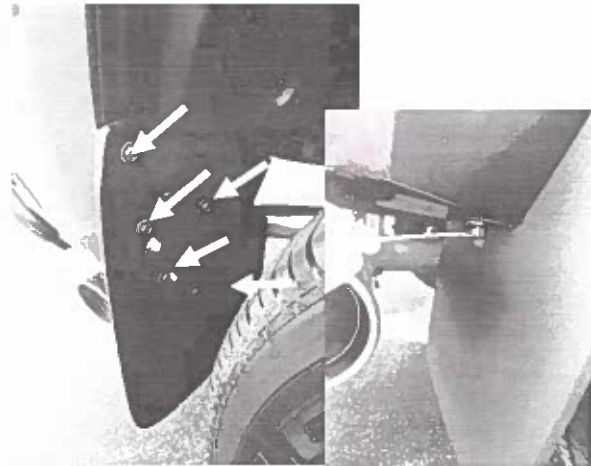
STEP 2: Attach the included rubber seal to the Fender Flares along the top leading edge where the Flare will make contact with the vehicle body. Peel back 2" of the adhesive backing and apply the double sided tape to the inside surface of the Fender Flare, peeling back a few inches at a time and applying pressure to secure rubber seal to Fender Flare.

Installation Instructions
Rear Bolt-On Look Fender Flares
TOYOTA TUNDRA (14-21)

FIT-FF998



STEP 3: Trim rubber seal at end of Fender Flare. Save extra rubber seal for install on opposite side Fender Flare and discard any excess once both sides are complete.



STEP 4: Using a 10mm socket / wrench remove the 5 screws from the inner area of the mud guard. Using a small flat screwdriver disengage the pin from the plug at the base of the mud guard. Remove mud guards completely and retain all components. Mud Guards cannot be installed with these Fender Flares.



STEP 5: Clean the body area where the Fender Flares will make contact. Ensure fenders are dry prior to install.



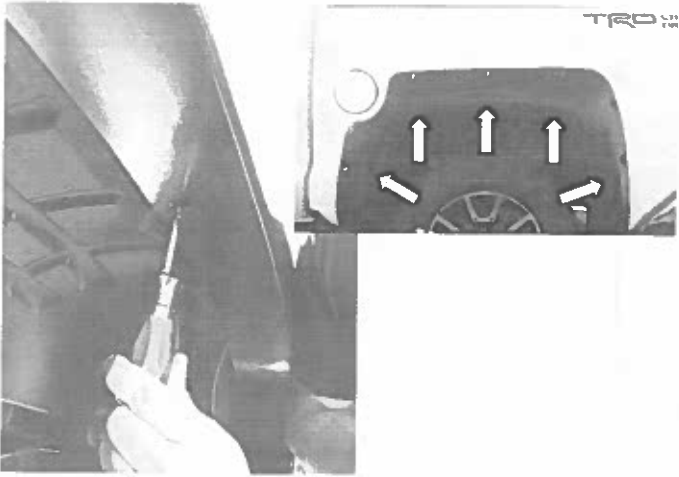
STEP 6: Hold Fender Flare on the vehicle in the position of best fit. Note where all the slots in the Fender Flare align with existing mounting holes in the vehicle.

Installation Instructions

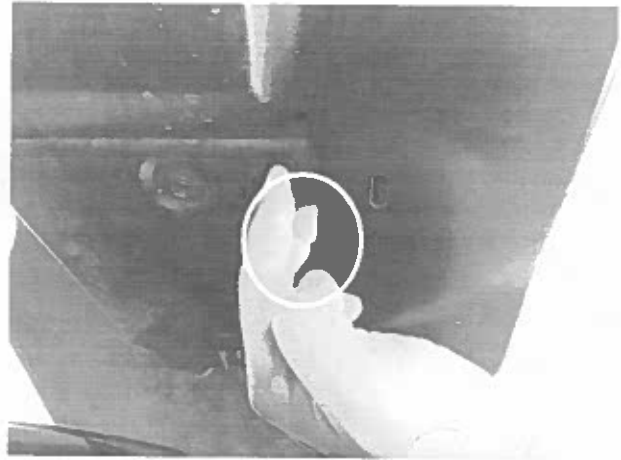
Rear Bolt-On Look Fender Flares

TOYOTA TUNDRA (14-21)

FIT-FF998



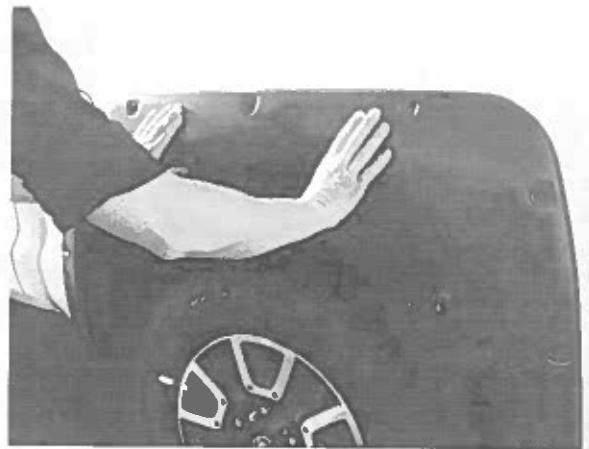
STEP 7: Loosely install a provided short screw into the top center hole in the Fender Flare. Continue installing the remaining (4) short screws into the 2 closest mounting locations either side of the top center hole. Do not fully tighten screws at this stage.



STEP 8: Note the (3) remaining open slot positions in the Fender Flare. Ready the spacers (and long screws) to go in behind the Fender Flare to fill the gap between the flare and the vehicle.



STEP 9: Working from top to bottom at these same (3) slot positions, hold and align the spacers with the slots and use the Long Screws to go through the spacers and into the corresponding factory holes. Do not fully tighten screws at this stage.



STEP 10: If necessary, make minor adjustments to the flare's position to achieve the best fit. Ensure rubber seal is sitting flat against vehicle. When satisfied, fully tighten all screw locations in the above order in which they were just installed. Repeat install for opposite side.