

Installation Instructions

Front Bolt-On Fender Flares

GMC Sierra HD (20-On)

FF1001

Important: Please read instructions entirely before installing this product.

Hardware Included	QTY
Extrusion	30ft
Large U CLIP	14
Large Clips	4
Small U Clip	2

Hardware Included	QTY

Bolt Kit Included	QTY
Extruded Plastic Nuts	42

Ensure that both left and right hand Fender Flares suit the profile of the vehicle. Note the areas where the Fender Flares come in contact with the vehicle. NOTE: If there is a body side molding, mark where the molding is to be cut, alternatively the Fender Flare can be cut to go around the molding. Be sure to allow enough room for the extrusion. **No drilling of vehicle is required for Bolt-On Look Fender Flares. This is a non-drill product.**

***PRIOR TO ANY PAINTING & INSTALLATION, PRODUCT SHOULD BE THOROUGHLY INSPECTED FOR ALL COMPONENTS LISTED ABOVE. PRODUCT SHOULD ALSO BE TEST FITTED PRIOR TO ANY PAINTING & INSTALLATION. PLEASE CONTACT EGR IF YOU HAVE ANY FITMENT QUESTIONS AND OR MISSING COMPONENTS.**

FOR RUGGED FLARES, INSTALL WILL START AT STEP 2

IF FLARES ARE PURCHASED PAINTED, INSTALL WILL START AT STEP 4

PAINTING INSTRUCTIONS – If Fender Flares are being painted; do not install edge extrusion until painting is complete. Prior to painting, clean all surfaces to be painted using clean water and a mild detergent, do not use lacquer thinner or any solvent based products. Wipe completely dry. Best results will be achieved by wiping the areas to be painted with a tack rag just prior to painting. Most automotive paints can be applied directly to the Fender Flares, however some may require a primer (check paint manufacturer specifications). Good adhesion will be achieved without sanding. Select a paint (and primer if necessary) that is suitable for rigid plastics PMMA (Acrylic). If using a paint system that requires baking, do not expose the product to temperatures above 70°C (158°F). Do not fit the extrusion or any of the hardware to the Fender Flares until the paint is completely dry.

Due to variations in installation, use, climate and other un-intended anomalies, there is potential for dirt or debris to become trapped between the fender flares and body panels. EGR recommends to the end user to check or clear the debris every few months to avoid any wear between the fender flares and vehicles. EGR parts are designed to fit snugly to the sheet metal and provide the best defense against such events. However, should the parts not be installed correctly, or used in a manner not consistent with the intended design, EGR will not warrant any damage to the parts or the vehicle.



STEP 1: Attach the extruded plastic bolts. Peel back white tape liner from the bottom side of the extruded plastic bolt and press until it snaps into place. Ensure inside of Fender Flares where the rubber seal is attached is clean, using the alcohol wipes provided. Wipe away any residue with a dry clean cloth.



STEP 2: Attach the included rubber seal to the Fender Flares. Peel back 2" of the adhesive backing and position on the Fender Flare. Attach the seal to the Fender Flare, peeling back a few inches at a time. Ensure pressure is used to secure rubber seal to Fender Flare edge. Attach rubber seal along all areas the Fender Flare will make contact with the vehicle body.

Installation Instructions

Front Bolt-On Fender Flares

GMC Sierra HD (20-On)

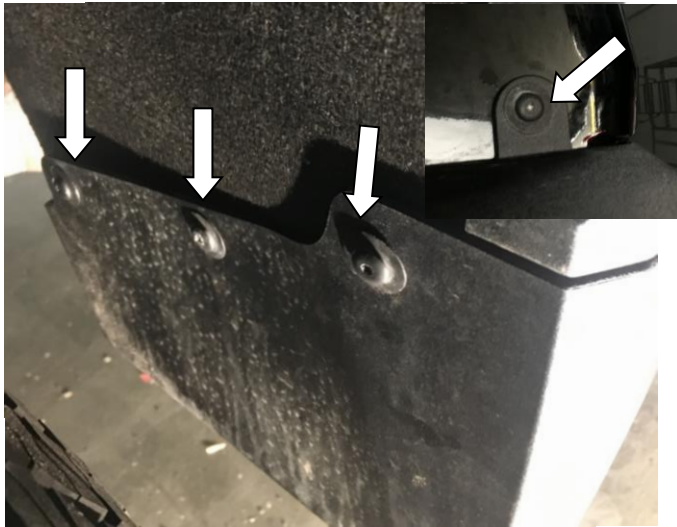
FF1001



STEP 3: Trim excess rubber seal and discard.



STEP 4: Clean the body areas where the Fender Flares will make contact. Ensure fenders are dry prior to install. Turn tires outward for Fender Flare installation.



STEP 5: Using #15 Torx head screwdriver remove the three factory screws from the front mudguards and one underside screw location, maintain screws for re-install. Fender flares require the mud guards to be removed. Retain factory mudguards for later use if required.



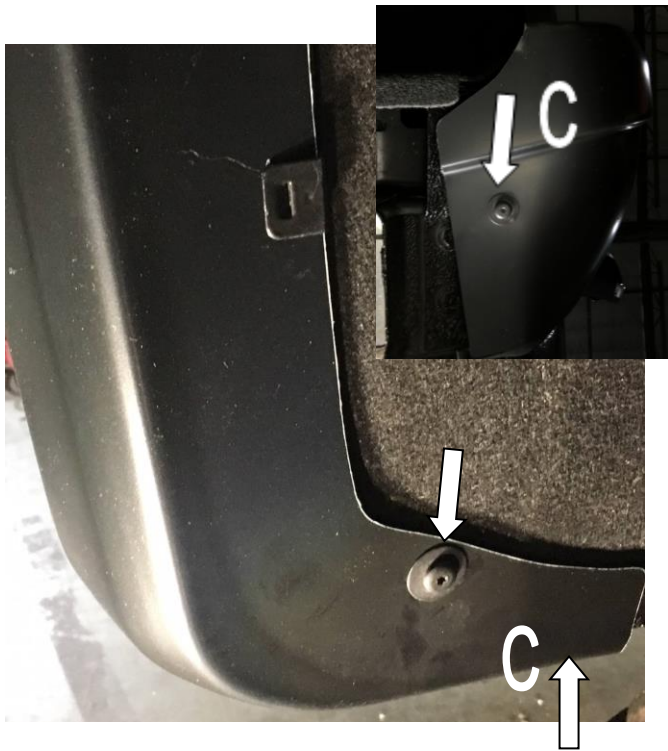
STEP 6: Using #15 Torx screwdriver remove factory screws at location **A** and **B**. Place Fender Flare on the vehicle into the position of best fit. Note where the slots in Fender Flare at positions **A**, **B** and vehicle wheel arch are located. Install the large clips to the inner wheel arch by sliding clips into the Fender Flare slots, ensure notch in the clip locates securely into the Fender Flare slot. Re-install the factory screws through the hole in the clips to the wheel arch.

Installation Instructions

Front Bolt-On Fender Flares

GMC Sierra HD (20-On)

FF1001



STEP 7: Using #15 Torx head screwdriver reinstall the previously removed factory mudguard screws at the upper and lower **(C)** screw locations through the slots in the front of the Fender Flare at the two noted locations.



STEP 8: At the noted **D, E** positions secure the Fender Flare to the wheel arch with the large U clips, slide the clips over the Fender Flare and the inner wheel arch lip ensuring the notch in clip locates securely into the slot in the Fender Flare. For position **F** secure using the small U clips, position the clip so that the barb in the clip locates in the slot of the Fender Flare. Ensure all fixing points are tight and secure and that the rubber seal is flush neatly against the vehicle body. Repeat install steps for the opposite side.

Installation Instructions

Front Bolt-On Fender Flares

GMC Sierra HD (20-On)

FF1001

REAR FENDER FLARE INSTALLATION



STEP 9: Attach the extruded plastic bolts. Peel back white tape liner from the bottom side of the extruded plastic bolt and press until it snaps into place. Ensure inside of Fender Flares where the rubber seal is attached is clean, using the alcohol wipes provided. Wipe away any residue with a dry clean cloth.



STEP 10: Attach the included rubber seal to the Fender Flares. Peel back 2" of the adhesive backing and position on the Fender Flare. Attach the seal to the Fender Flare, peeling back a few inches at a time. Ensure pressure is used to secure rubber seal to Fender Flare edge. Attach rubber seal along all areas the Fender Flare will make contact with the vehicle body. Trim excess rubber seal. Attach rubber seal to the bottom front corner of Fender Flares per the attached image that will locate around the factory spat.



STEP 11: Clean the body areas where the Fender Flares will make contact. Ensure fenders are dry prior to install.



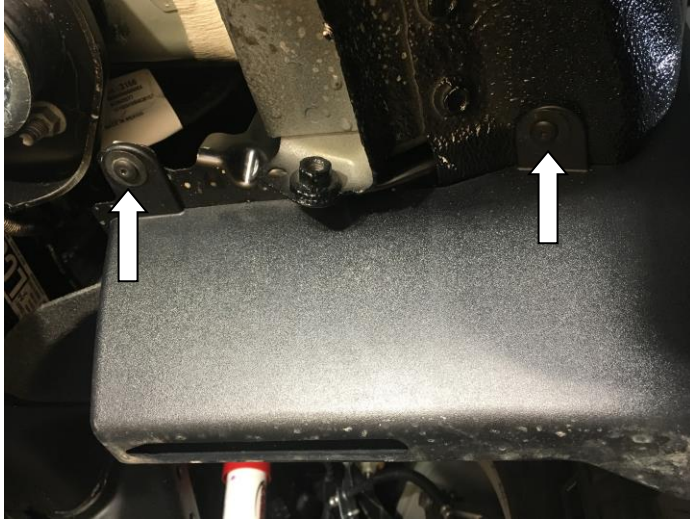
STEP 12: Using #15 Torx head screwdriver remove the three screws from the rear factory mud guard in the rear wheel arch. Fender flares require the rear mud guards to be removed, maintain screws for re-install if required.

Installation Instructions

Front Bolt-On Fender Flares

GMC Sierra HD (20-On)

FF1001



STEP 13: Using #15 Torx head screwdriver remove the upper and lower screws from the underside of the rear factory spat in the rear wheel arch. Maintain screws for re-install. On the front spat using #15 Torx head screwdriver remove the lower screw from the underside that aligns with the slot in the Fender Flare.



STEP 14: Place Fender Flare on the vehicle into the position of best fit. Note where the slot in Fender Flare aligns with the previously removed factory screws in the front and rear spats. Using #15 Torx head screwdriver re-install the screw from the front of the rear factory spat through the slots in the Fender Flare.



STEP 15: Using #15 Torx head screwdriver reinstall the previously removed factory mudguard screws at the upper screw locations through the slots in the front of the Fender Flare at the noted location.



STEP 16: To secure the Fender Flare to the body, apply upward tension on Fender Flare to the vehicle fender when installing the large U clips. Slide the clips over the Fender Flare and the inner wheel arch lip in the six locations shown. Position the clip so that the barb in the clip locates in the slot of the Fender Flare. Ensure all fixing points are tight and secure and that the rubber seal is flush neatly against the vehicle body. Repeat install steps for the opposite side.