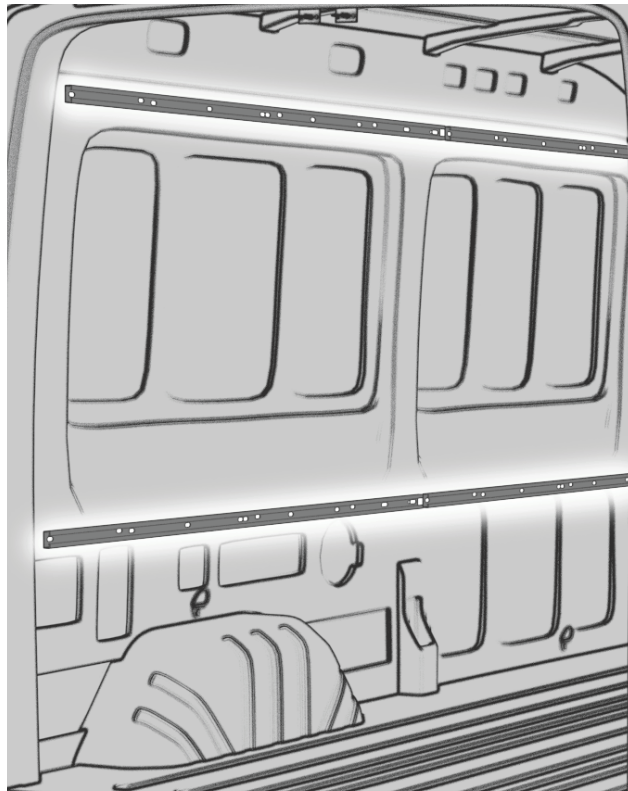




VAN STORAGE SOLUTIONS

INSTALLATION INSTRUCTIONS for DUAL RAIL SHELVING MOUNTING KIT



Weather Guard /WERNER CO.
420 E. Terra Cotta Ave.
Crystal Lake, IL 60014 USA

800-456-7865 (Toll Free)
800-334-2981 (Fax)

Weather Guard / WERNER CO.
9133 Leslie St. Unit 105
Richmond Hill, ON L4B4N1

888-562-2251 (Toll Free)
888-456-8460 (Fax)

CONTENTS

MOUNTING LOCATION & BLIND FASTENER INSTALL

MOUNTING LOCATION	3
--------------------------------	---

FORD TRANSIT

FORD TRANSIT PARTS LIST	4
-------------------------------	---

FORD TRANSIT MOUNTING INSTRUCTIONS	5
--	---

MERCEDES SPRINTER

MERCEDES SPRINTER PARTS LIST	6
------------------------------------	---

MERCEDES SPRINTER MOUNTING INSTRUCTIONS.....	7-10
--	------

RAM PROMASTER

RAM PROMASTER PARTS LIST	11
--------------------------------	----

RAM PROMASTER MOUNTING INSTRUCTIONS.....	12
--	----

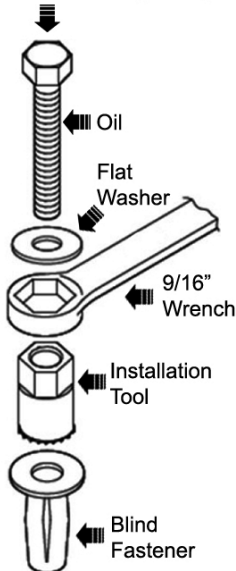
WARRANTY	13
-----------------------	----

MOUNTING LOCATION

Dual rail mounting systems are intended to use the top and middle support structure on the inner van walls.



Use 13mm socket (M8)
or 7/16" socket (1/4-20)



INSTALLATION PROCEDURE USING BLIND FASTENERS

Place a drop of oil on the M8-1.25 x 55mm or 1/4-20 x bolt before assembling as shown on left.

Place the Blind Fastener in the hole and use a 13mm when installing M8 Blind Fastener or 7/16" socket when installing 1/4-20 Blind Fastener and driver to tighten the bolt until the Blind Fastener is fully seated.

When setting the bolt, it will start out tight. As the Blind Fastener "bulbs" out it will get easier, until it bottoms out of sets.

Make sure the Blind Fastener and the installation tool do not slip during the installation.

FORD TRANSIT

ATTENTION: PLEASE READ AND UNDERSTAND ALL INSTRUCTIONS AND WARNINGS BEFORE ASSEMBLING, INSTALLING OR USING THIS PRODUCT.

! PLAN YOUR VAN (TIPS FOR FASTER INSTALLATION)

FOR ELECTRIC VEHICLES – Drilling into electrical wiring may damage vehicle systems and may cause bodily harm. This equipment should be installed by qualified personnel familiar with this type of vehicle and the hazards involved. To prevent damage to components underneath the floor, mainly the battery and high voltage system components, refer to your vehicle manufacturer's instructions or the manufacturer's website for more information.

Follow these instructions to install your WEATHER GUARD® van shelving. Using this mounting kit you will be able to install the van shelving using factory installed weld nuts and mounting holes. Before drilling for the blind fasteners, check for electrical wiring and air-bag system components.

PARTS LIST

BOLT KIT

DRFTAF-FORD TRANSIT FRONT DRIVER SIDE

Description	Quantity
CHANNEL FRONT TRANSIT 52 1/2 in	2
BOLT KIT TRANSIT	1

DRFT30RP- FORD TRANSIT REAR 130WB

Description	Quantity
CHANNEL REAR 130WB TRANSIT 51 3/8 in	2
BOLT KIT TRANSIT	1

DRFT48RP- FORD TRANSIT REAR 148WB

Description	Quantity
CHANNEL REAR 148WB TRANSIT 69 in	2
BOLT KIT TRANSIT	1

DRFT48XRP- FORD TRANSIT REAR 148 EXT. WB

Description	Quantity
CHANNEL REAR 148 EXT. WB TRANSIT 97 3/8 in	2
BOLT KIT TRANSIT	1

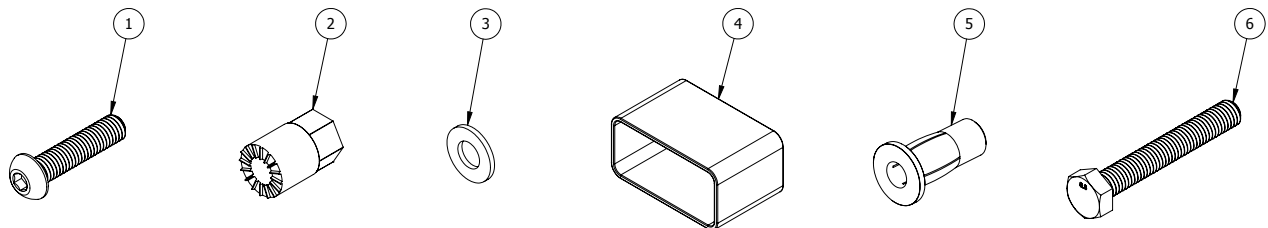
DESCRIPTION

QUANTITY

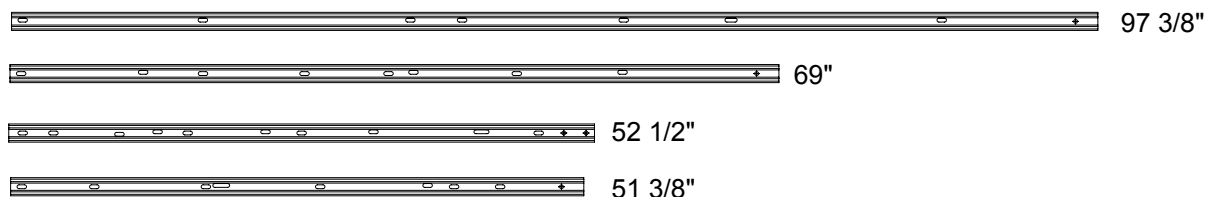
① M8 BOLT 1.25 X 35 MM	14
② BLIND FASTENER INSTALL TOOL	1
③ 5/16" WASHER	14
④ RED END CAPS	4
⑤ BLIND FASTENER M8 1.25	8
⑥ BLIND FASTENER DRIVE BOLT M8 1.25 X 55 MM HEX	1

TOOLS REQUIRED

5mm Allen Wrench	Marker
7/16" Socket	Electric Drill
7/16" Wrench	1/4" Drill Bit
1/2" Socket	1/2" Drill Bit
1/2" Wrench	Torque Wrench
9/16" Wrench	



CHANNEL RAILS



TRANSIT MOUNTING CHANNELS

BEFORE YOU BEGIN:

- The mounting channels will bolt to van walls using a combination of factory installed weld nuts and blind fasteners.
- Front mounting channel DRFTAF is common across all Transit models. This rail kit will be used on the driver's side front location for any Transit. All other rail mounting kits are dependent on the vehicle's wheelbase. See parts list for the correct rail in the rear location and passenger side rear location and ensure the correct rail kit is being installed in each location. Shelving kits are compatible with all rails.
- Channels install similarly but have different lengths and weld nut locations – see noted locations for each rail on image below.

INSTALLATION INSTRUCTIONS:

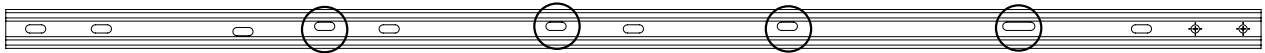
1. If applicable, remove upper and lower row wall panels prior to installation of the mounting channels. (The dual rail hardware will replace the panel fasteners in securing the panels to the walls.)
2. Align top rail along the top support structure of the van as noted in image on page 3.
3. Mark locations of mounting where there is no available weld nut on the support structure. Rails should be mounted using the locations noted in image below for each rail. Ensure rail is level when marking locations.
4. Remove rail and drill pilot hole at marked locations with 1/4" drill bit. Follow with a 1/2" drill bit in each hole to ensure proper hole size for blind fastener.
5. Install blind fasteners in marked locations using blind faster instructions on page 3.
 - a. Before drilling for blind fasteners, check to make sure you won't be damaging wiring, gas lines, or other critical vehicle systems.
 - b. Too much pressure while drilling or setting the blind fasteners may cause dimples in the body panel around the install location.
6. Secure mounting channels to the factory weld nuts and blind fasteners with M8 bolts and washers using 5mm allen head wrench.
7. Level the channels before tightening. Torque to 20 ft-lbs.
8. Repeat steps 2-7 with mid-rail on the lower support structure.

DRFTAF

TOP RAIL



MIDDLE RAIL

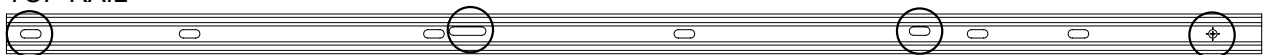


FRONT OF VAN



DRFT30RP

TOP RAIL

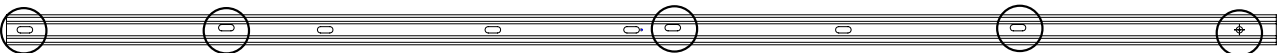


MIDDLE RAIL

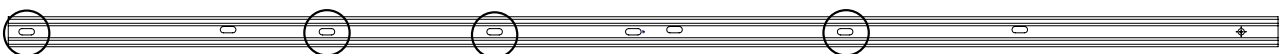


DRFT48RP

TOP RAIL



MIDDLE RAIL



DRFT48XRP

TOP RAIL



MIDDLE RAIL



MERCEDES SPRINTER

ATTENTION: PLEASE READ AND UNDERSTAND ALL INSTRUCTIONS AND WARNINGS BEFORE ASSEMBLING, INSTALLING OR USING THIS PRODUCT.

! PLAN YOUR VAN (TIPS FOR FASTER INSTALLATION)

FOR ELECTRIC VEHICLES – Drilling into electrical wiring may damage vehicle systems and may cause bodily harm. This equipment should be installed by qualified personnel familiar with this type of vehicle and the hazards involved. To prevent damage to components underneath the floor, mainly the battery and high voltage system components, refer to your vehicle manufacturer's instructions or the manufacturer's website for more information.

Follow these instructions to install your WEATHER GUARD® van shelving.

Using this mounting kit you will be able to install the van shelving using factory installed weld nuts and mounting holes.

Before drilling for the blind fasteners, check for electrical wiring and air-bag system components.

PARTS LIST

BOLT KIT

DRMSAF-MERCEDES SPRINTER FRONT DRIVER SIDE

Description	Quantity
CHANNEL FRONT SPRINTER 53 1/2 in	2
LINER HOLDER	3
PLATE	3
BOLT KIT SPRINTER	1

DRMS44RP-MERCEDES SPRINTER REAR 144WB

Description	Quantity
CHANNEL REAR 144WB SPRINTER 63 in	2
LINER HOLDER	4
PLATE	4
BOLT KIT SPRINTER	1

DRMS70RP-MERCEDES SPRINTER REAR 170 & 170 EXT. WB

Description	Quantity
CHANNEL REAR 170WB SPRINTER 102 1/2 in	2
LINER HOLDER	4
PLATE	4
BOLT KIT SPRINTER	1

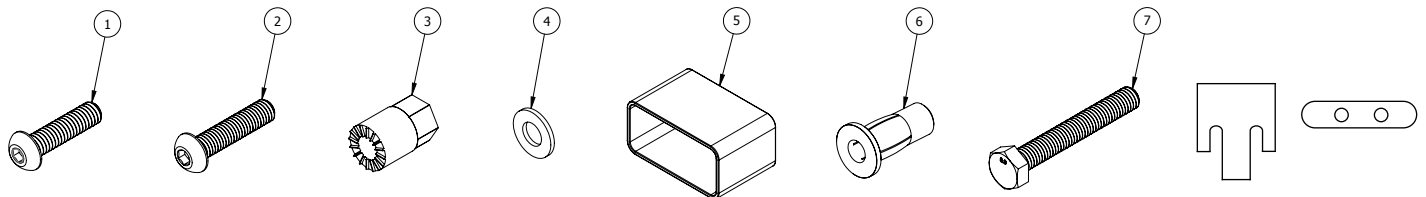
DESCRIPTION

QUANTITY

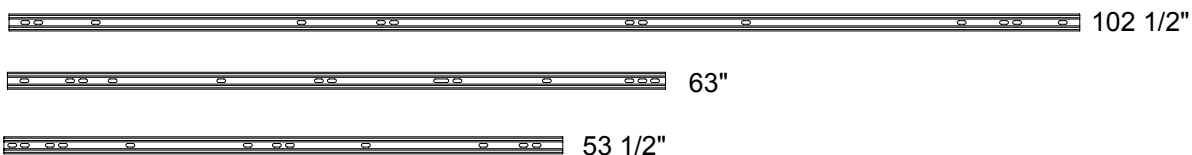
①	BUTTON HEAD-5/16 18 X 1.25" BOLT	8
②	M8 BOLT 1.25 X 35 MM	8
③	BLIND FASTENER INSTALL TOOL	1
④	5/16" WASHER	8
⑤	RED END CAPS	4
⑥	BLIND FASTENER M8 1.25	7
⑦	BLIND FASTENER DRIVE BOLT M8 1.25 X 55 MM HEX	1

TOOLS REQUIRED

5mm Allen Wrench	Marker
7/16" Socket	Electric Drill
7/16" Wrench	1/4" Drill Bit
1/2" Socket	1/2" Drill Bit
1/2" Wrench	Torque Wrench
9/16" Wrench	



CHANNEL RAILS



SPRINTER MOUNTING KIT INSTALLATION INSTRUCTIONS

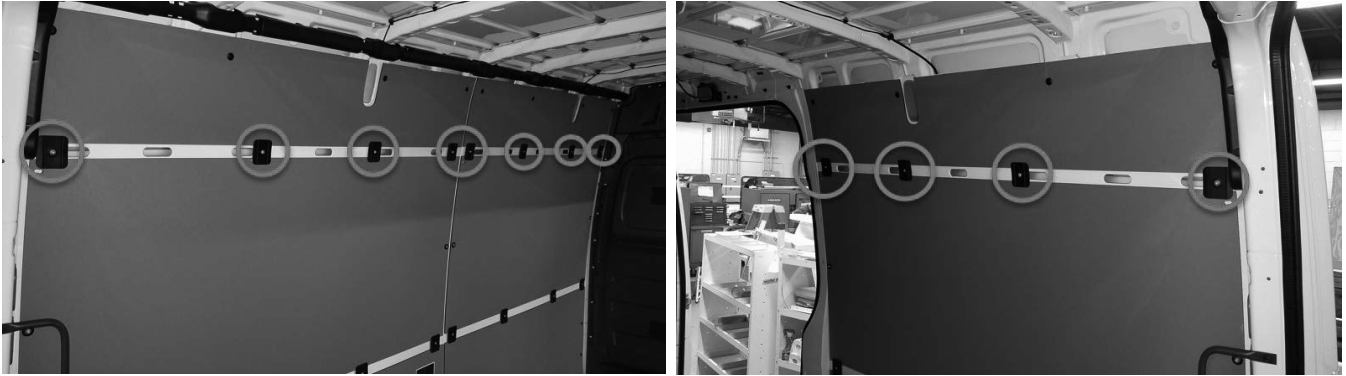
BEFORE YOU BEGIN:

- The mounting channels will bolt to van walls using a combination of plates and blind fasteners.
- Front mounting channel DRMSAF is common across all wheelbase Sprinters.
- The Weather Guard Van Dual Rail Mounting Kit is compatible with OEM interior trim kit.

INSTALLATION INSTRUCTIONS:

1. OEM Liner Removal

If the van has wall liners, the black plastic pieces along the top and middle of the wall must first be removed before installing the channels.



2. Install blind fasteners in the van wall.

For **DRMS70RP** and **DRMS44RP** being installed on the driver side.

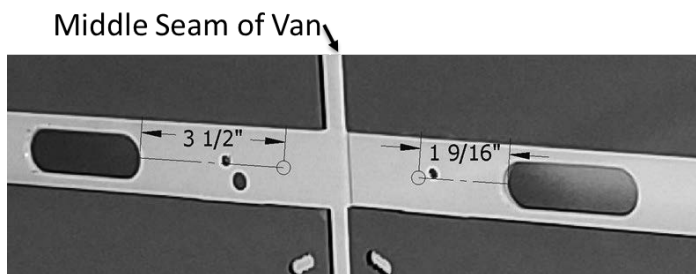
Make a mark 3-1/2" in front of the van obround just behind the middle seam of the van on the driver side. See IMAGE A.

For **DRMSAF**

Make a mark 1-9/16" in front of the van obround just behind the middle seam of the van on the driver side. See IMAGE A.

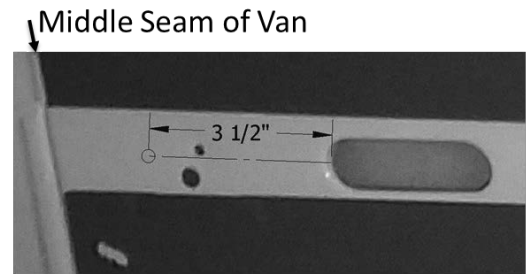
For **DRMS70RP** and **DRMS44RP** being installed on the passenger side.

Make a mark 3-1/2" in front of the van obround on the passenger side of the van. See IMAGE B.



Driver Side (Front of Van is to the right)

IMAGE A



Passenger Side (Front of Van is to the left)

IMAGE B

SPRINTER MOUNTING KIT INSTALLATION INSTRUCTIONS

- Drill pilot hole at marked locations with 1/4" drill bit. Follow with a 1/2" drill bit in each hole to ensure proper hole size for blind fastener.
- Install blind fasteners in marked locations using blind faster instructions on page 3.
 - a. Before drilling for blind fasteners, check to make sure you won't be damaging wiring, gas lines, or other critical vehicle systems.
 - b. Too much pressure while drilling or setting the blind fasteners may cause dimples in the body panel around the install location.
- 5. Assemble plates to the channels.

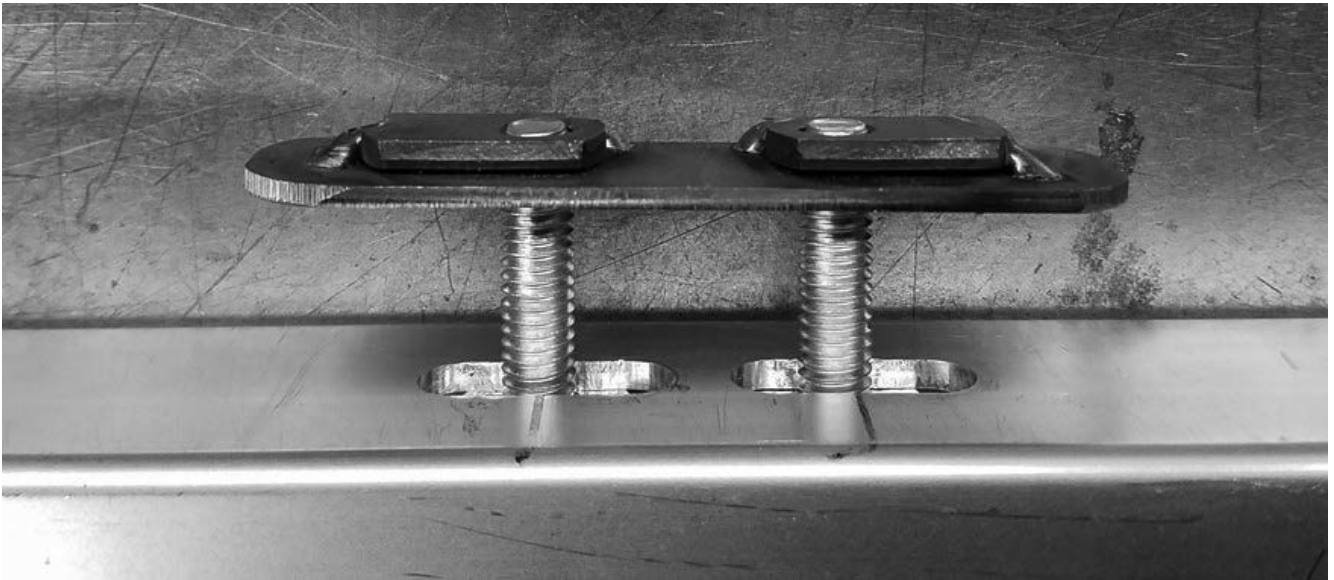


IMAGE C

Attach the mounting plates to the channel by placing two 1-1/4" long 5/16-18 bolts with 5/16" washer through the slots in the channel and just barely threading the bolts into the nuts on the plate shown.

The plates should be installed to the channels in each of the slots pairs marked below.

DRMS70RP

TOP RAIL



FRONT OF VAN



DRMS44RP

TOP RAIL



DRMSAF

TOP RAIL



SPRINTER MOUNTING KIT INSTALLATION INSTRUCTIONS

- Align the channel such that the plates line up with the obrounds in the van wall.



- Angle the front end of each plate into its respective obround and push them toward the front of the van until their back end can be pushed into the obround.



- Once all the plates are completely inside the obrounds, place a 5/16-18 bolt with a washer through the remaining channel slot and loosely thread it into the blind fastener.

6. Install Middle Rails

- Use existing OEM well nut location to secure rails. If weld nut is not present, mark location. Drill pilot hole at marked locations with 1/4" drill bit. Follow with a 1/2" drill bit in each hole to ensure proper hole size for blind fastener.
- Install blind fasteners in marked locations using blind faster instructions on page 3.

DRMS70RP MIDDLE RAIL



DRMS44RP MIDDLE RAIL

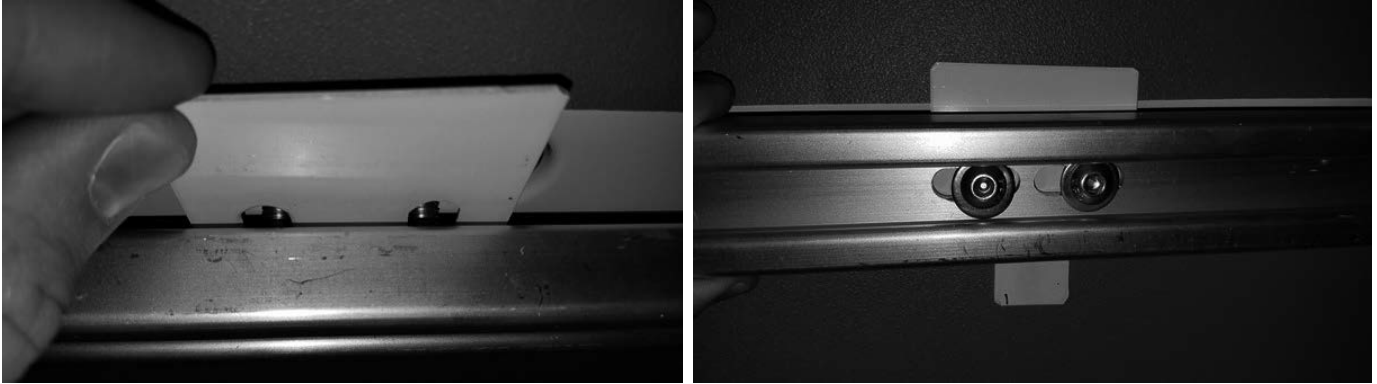


DRMSAF MIDDLE RAIL



SPRINTER MOUNTING KIT INSTALLATION INSTRUCTIONS

7. If applicable: Re-install OEM wall liners.



- If the van has wall liners, the provided liner holders must be installed between the channel and the liners at each plate location.
 - Insert each liner holder from above. The long middle tongue will sit between the plate bolts and the holder will straddle the bolts.
 - Ensure that all middle holder tongues are in front of, and overlapping, the lower liner.
8. Ensure rails are level and tighten. All the bolts using a 3/16" hex tool to 15 ft-lbs (in vans with wall liners, this may require a few passes as the liners and liner holders will compress as the bolts pull the channel tighter against the wall).

RAM PROMASTER

ATTENTION: PLEASE READ AND UNDERSTAND ALL INSTRUCTIONS AND WARNINGS BEFORE ASSEMBLING, INSTALLING OR USING THIS PRODUCT.

PLAN YOUR VAN (TIPS FOR FASTER INSTALLATION)

FOR ELECTRIC VEHICLES – Drilling into electrical wiring may damage vehicle systems and may cause bodily harm. This equipment should be installed by qualified personnel familiar with this type of vehicle and the hazards involved. To prevent damage to components underneath the floor, mainly the battery and high voltage system components, refer to your vehicle manufacturer's instructions or the manufacturer's website for more information.

Follow these instructions to install your WEATHER GUARD® van shelving. Using this mounting kit you will be able to install the van shelving using factory installed weld nuts and mounting holes. Before drilling for the blind fasteners, check for electrical wiring and air-bag system components.

RAM PROMASTER PARTS LIST

BOLT KIT

DRRPAF-RAM PROMASTER FRONT DRIVER SIDE	
Description	Quantity
CHANNEL FRONT PROMASTER 38 in	2
BOLT KIT PROMASTER	1

DRRP36RP-RAM PROMASTER REAR 136WB	
Description	Quantity
CHANNEL REAR 136WB PROMASTER 70 in	2
BOLT KIT TRANSIT	1

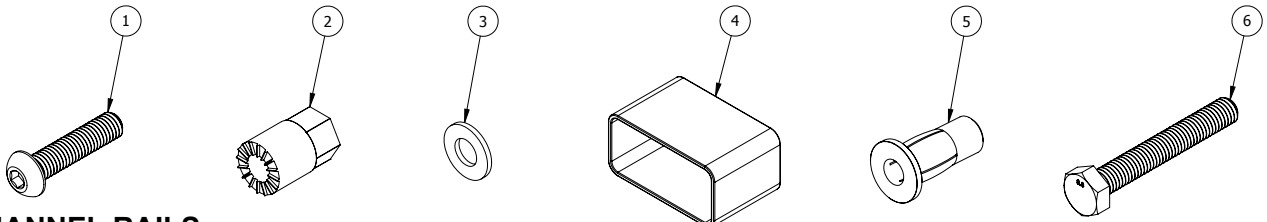
DRRP59RP-RAM PROMASTER REAR 159WB	
Description	Quantity
CHANNEL REAR 159WB PROMASTER 51 1/4 in	2
BOLT KIT TRANSIT	1

DRRP59XRP-RAM PROMASTER REAR 159 EXT. WB	
Description	Quantity
CHANNEL REAR 159 EXT. WB PROMASTER 86 in	2
BOLT KIT TRANSIT	1

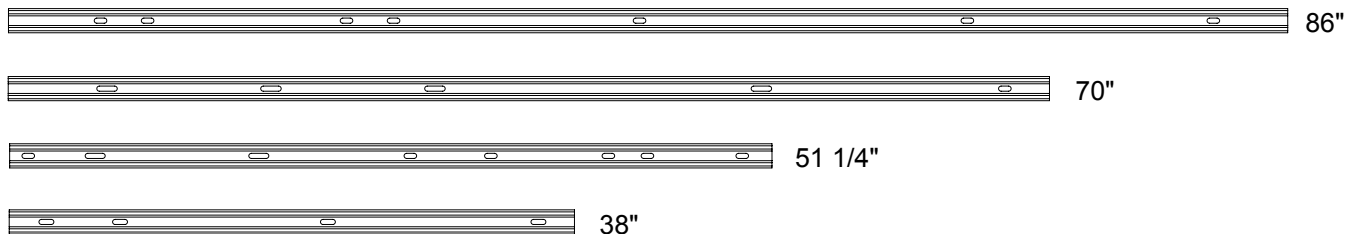
DESCRIPTION	QUANTITY
① M8 BOLT 1.25 X 35 MM	14
② BLIND FASTENER INSTALL TOOL	1
③ 5/16" WASHER	14
④ RED END CAPS	4
⑤ BLIND FASTENER M8 1.25	8
⑥ BLIND FASTENER DRIVE BOLT M8 1.25 X 55 MM HEX	1

TOOLS REQUIRED

- | | |
|------------------|----------------|
| 5mm Allen Wrench | Marker |
| 7/16" Socket | Electric Drill |
| 7/16" Wrench | 1/4" Drill Bit |
| 1/2" Socket | 1/2" Drill Bit |
| 1/2" Wrench | Torque Wrench |
| 9/16" Wrench | |



CHANNEL RAILS



PROMASTER MOUNTING KIT INSTALLATION INSTRUCTIONS

BEFORE YOU BEGIN:

- The mounting channels will bolt to support structure on van walls using blind fasteners.
- Front mounting channel DRRPAF is common across the 136", 159" and 159" Extended wheel base ProMaster models. This rail kit is not compatible with the 118" wheelbase, low roof ProMaster.
- Rear mounting channels will install with the same instructions but will utilize different mounting locations. Please note the locations on the drawings provided in illustration below.
- The Weather Guard dual rail mounting kit is compatible with the OEM interior trim kit.

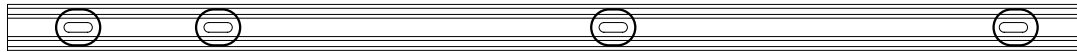
INSTALLATION INSTRUCTIONS:

1. Align top rail along the top support structure of the van as noted in image on page 3.
2. Mark locations of mounting on the support structure. Rails should be mounted using the locations noted in illustration below for each rail. Ensure rail is level when marking locations.
3. Remove rail and drill pilot hole at marked locations with 1/4" drill bit if a preexisting OEM hole is not present. Follow with a 1/2" drill bit in each hole to ensure proper hole size for blind fastener.
4. Install blind fasteners in marked locations using blind faster instructions on page 3.
 - a. Before drilling for blind fasteners, check to make sure you won't be damaging wiring, gas lines, or other critical vehicle systems.
 - b. Too much pressure while drilling or setting the blind fasteners may cause dimples in the body panel around the install location.
5. Secure mounting channels to the blind fasteners with M8 bolts and washers using 5mm allen head wrench.
6. Level the channels before tightening. Torque to 20 ft-lbs.
7. Repeat steps 2-6 with mid-rail on the lower support structure.

DRRPAF

TOP RAIL

FRONT OF VAN



MIDDLE RAIL



DRRP36RP

TOP RAIL



MIDDLE RAIL



DRRP59RP

TOP RAIL



MIDDLE RAIL



DRRP59XRP

TOP RAIL



MIDDLE RAIL



WERNER CO. LIMITED LIFETIME WARRANTY FOR WEATHER GUARD® PRODUCTS

WEATHER GUARD® Products – Limited Lifetime Warranty

(Purchased on or after 1/1/2009)

WERNER CO. (the “Manufacturer”) warrants to the original purchaser only that WEATHER GUARD® Truck and Van Products (the “WEATHER GUARD® Product”) will be free from defects in material and workmanship from the date of purchase and continuing for the expected lifetime of the WEATHER GUARD® Product. A copy of the original sales receipt must be supplied to the Manufacturer at the time a warranty claim is made. This warranty terminates if the original purchaser transfers the WEATHER GUARD® Product to any other person.

What is Covered

All WEATHER GUARD® Products identified above that are purchased on or after January 1, 2009.

What We Will Do To Correct Problems

Subject to the limitations and exclusions described in this limited warranty, the Manufacturer will remedy defects in materials or workmanship by providing one of the following remedies at its option and without charge to the original purchaser for parts or labor: (a) repairing the defective portion of the WEATHER GUARD® Product or (b) replacing the entire WEATHER GUARD® Product. In addition, the Manufacturer may elect at its option, not to repair or replace the WEATHER GUARD® Product, but rather issue to the original purchaser a refund equal to the purchase price paid for the WEATHER GUARD® Product or a credit to be used toward the purchase of a new WEATHER GUARD® Product.

What is Not Covered

This limited warranty expressly excludes:

- Defects caused by normal wear and tear, cosmetic rust, scratches, accidents, unlawful vehicle operation, or modification to the product, or any types or repair of a WEATHER GUARD® Product other than those authorized or provided by the Manufacturer.
- Defects resulting from conditions beyond the Manufacturer’s control including, but not limited to misuse, overloading, or failure to assemble, mount or use the WEATHER GUARD® Product in accordance with the Manufacturer’s written instructions or guidelines included with the WEATHER GUARD® Product or made available to the original purchaser.
- Damage to the contents of the box or vehicle.
- TO THE EXTENT PERMITTED BY LAW, IN NO EVENT SHALL THE MANUFACTURER BE LIABLE FOR ANY INCIDENTAL, SPECIAL, INDIRECT, OR CONSEQUENTIAL DAMAGES, INCLUDING ANY ECONOMIC LOSS, WHETHER RESULTING FROM NONPERFORMANCE, USE, MISUSE OR INABILITY TO USE THE WEATHER GUARD® PRODUCT OR THE MANUFACTURER’S NEGLIGENCE.

No Other Express Warranty Applies

This Limited Lifetime Warranty is the sole and exclusive warranty for WEATHER GUARD® Products. No employee, agent, dealer, or other person is authorized to alter this warranty or make any other warranty on behalf of WERNER CO.

Notification Procedures

If the WEATHER GUARD® Product does not conform with the terms of this limited warranty, the original owner must promptly notify the Manufacturer in writing upon discovery of the nonconformity. In order to receive the remedies under this limited warranty, the warranty claim must describe the nature of the nonconformity, and a copy of the original sales receipt, invoice, bill or other proof of purchase must accompany the claim. Repairs or modifications made to the WEATHER GUARD® Product by other than the Manufacturer or its authorized agent will nullify this limited warranty. Coverage under this limited warranty is conditioned at all times upon the owner’s compliance with these required notification and repair procedures. Warranty claims must include reciprocal contact information and may be made via certified mail to:

WERNER CO.



ATTN: Weather Guard® Warranty Claims
555 Pierce Road, STE 300 • Itasca, IL 60143
weatherguard.com

If you have any questions, please call toll free at 1-800-456-7865

Part No. 24-00163DIG Rev. A