

<b>PARTS INCLUDED:</b>	<b>QTY</b>
RDS BUMPER	1
SKID PLATE BRACKET	1
ADAPTIVE CRUISE CONTROL BRACKET	1
SKID PLATE	1
<b>HARDWARE:</b>	<b>QTY</b>
½"X1 ½" Hex bolt	10
½" hex nuts	10
½ fender washer	20
3/8" x 1" Button head	6
3/8" hex nuts	6
Small washers	6
Large washer	6
M6x20mm Button head	3
M6 Nuts	3
M5x20mm self-tapper	2



***ATTENTION!*** Be aware that relocating the adaptive cruise control (ACC) module may change the characteristics & sensitivity of the system. ACC is designed to enhance the driving experience, but is not a replacement for responsible operation of the vehicle. **PLEASE DRIVE SAFELY!**

## Bumper Removal

1. Carefully pull the plastic cover off the bumper by releasing the clips with a forward motion. This can be done by hand, no tool needed.
2. Remove tow hooks and set aside.

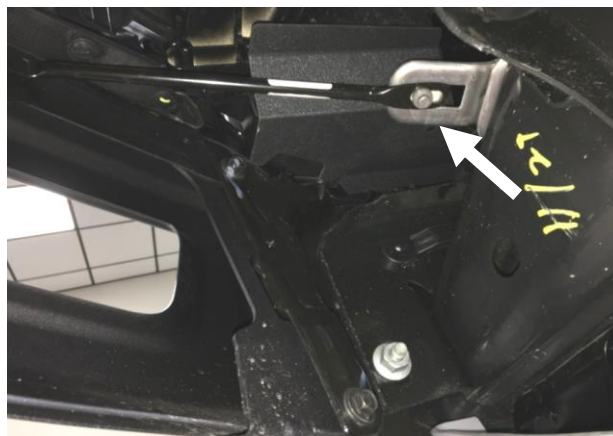


**(If your vehicle is not equipped with the Adaptive Cruise Control module skip steps 3-5)**

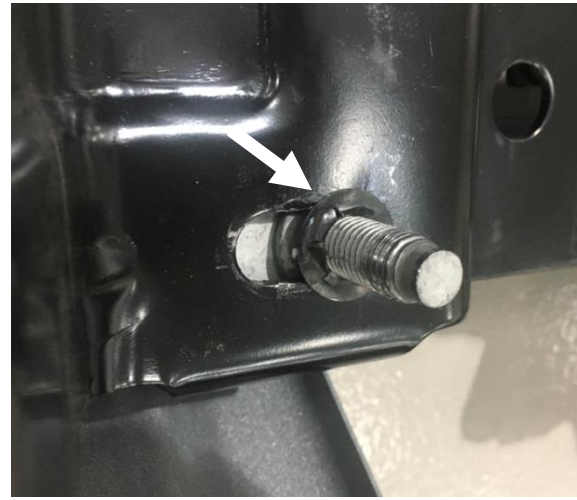
- 3.** Remove the x3 nuts holding the Adaptive Cruise Control module on the studs.
- 4.** Disconnect the electrical plug and remove the module.
- 5.** Remove the module harness from the bumper and set aside.



- 6.** Remove the 8mm bolt that attaches the support bar to the bumper. (Bothe sides)



7. Remove the 21mm nuts that hold the bumper. There will be two per side that can be reached from the front and one on both sides that is accessible from behind the bumper.
8. Remove the plastic clips that attach the rubber shroud to the bumper and remove.



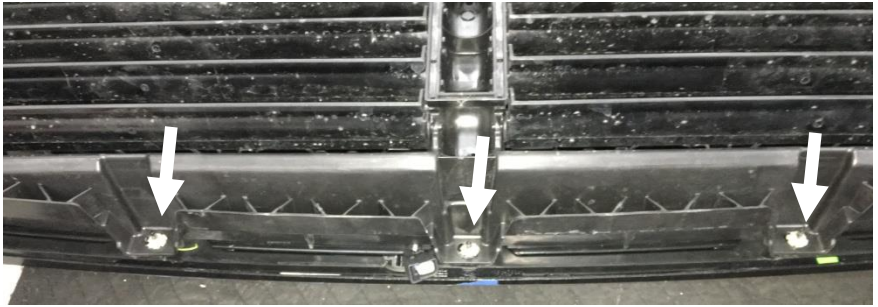
### **Adaptive Cruise Control Relocation Bracket Install.**

*(If your truck is not equipped with Adaptive Cruise Control, skip this step.)*

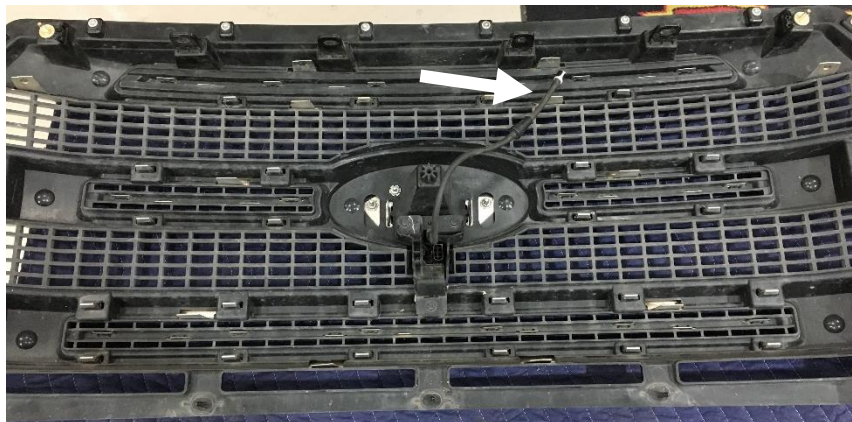
1. Place the grill face down on a soft blanket to prevent any damage or scratches.
2. With a 10mm socket wrench, loosen the four nuts located on all four corners in the grill.



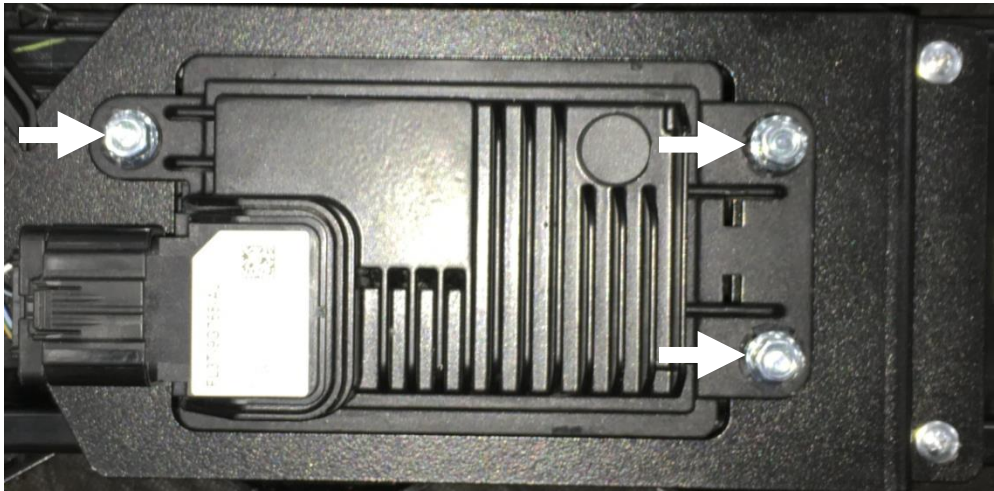
3. With an 8mm socket wrench remove the bolt located in the center of the grill.
4. Remove the three hex nut clips.



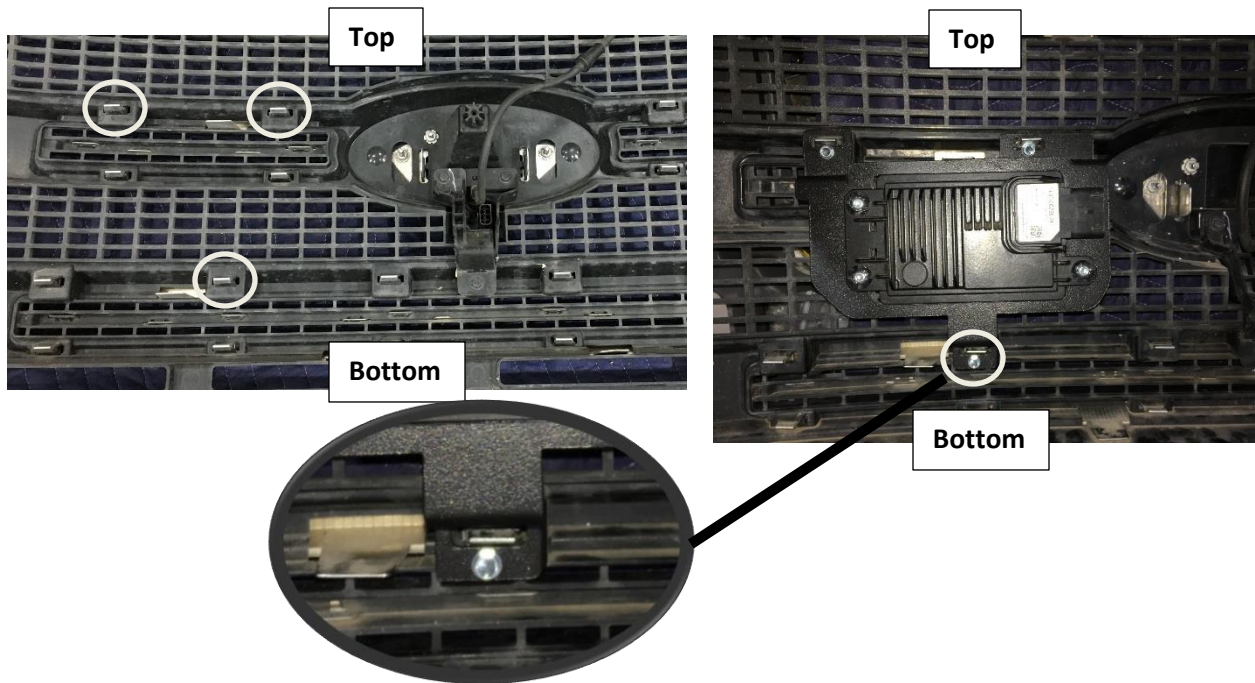
5. Release the electrical plug from the grill.
6. As you are separating the shudders from the grill there will an electrical plug to discount.



7. Using the supplied M6x20mm button head bolts and flanged nuts install the radar module to the relocation bracket.

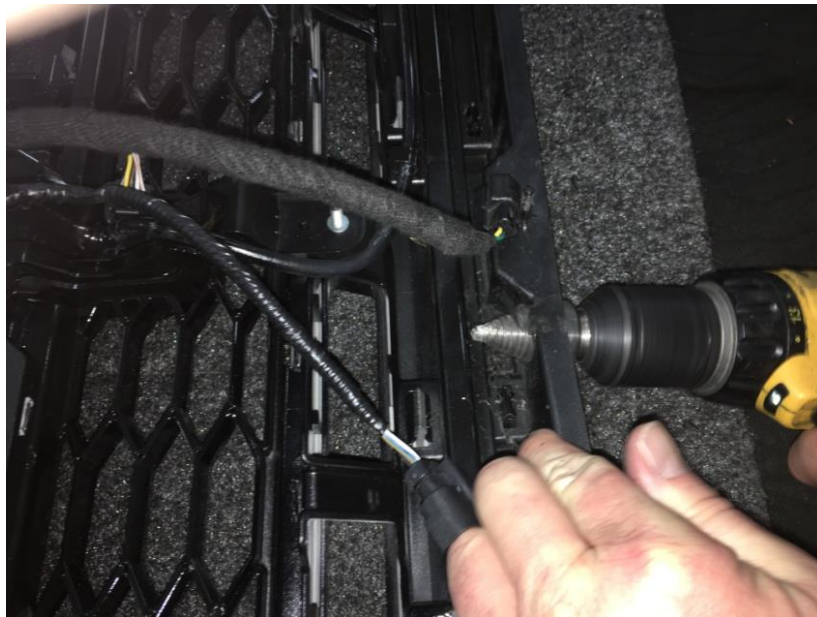


8. Using the supplied M5 x20mm hex head self-tapping screws install the ACC bracket to the inner grill as shown.



**9.** Make an incision in the top plastic bumper guard and pull the Adaptive cruise control connector through the opening.

**10.** Using a 1 ½" hole saw, drill a hole in the bottom of your grill for the module harness plug to pass through.

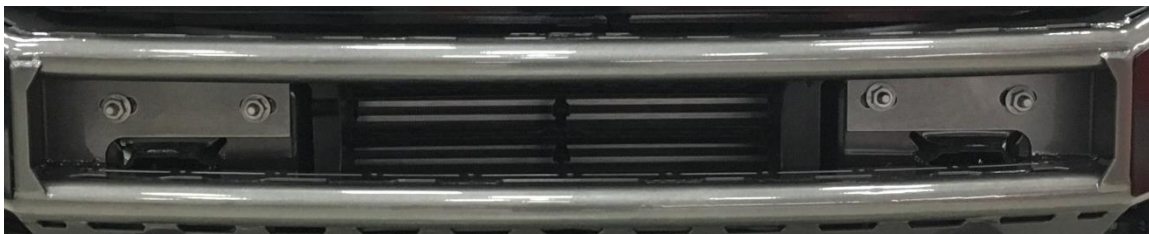


**14.** Re-install the shutter assembly back to your grill. Be sure all the electrical connections inside the grill are plugged back in before it is completely secured.



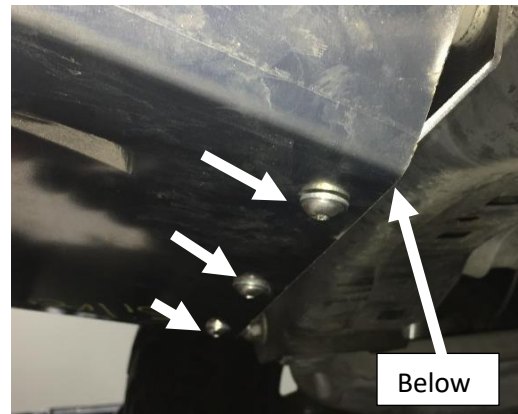
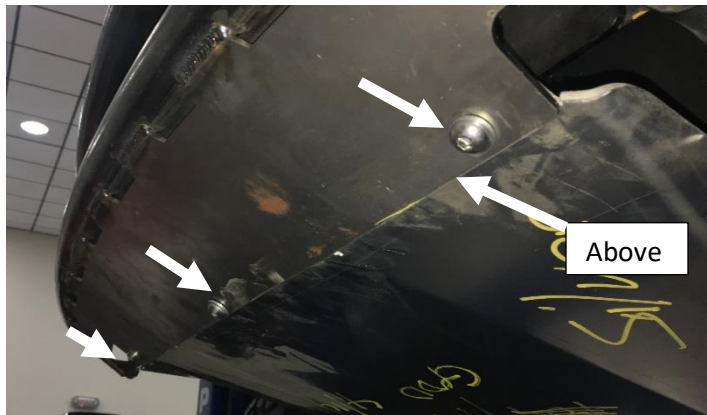
## RDS Bumper Installation:

1. With some additional help, carefully mate the RDS bumper up to the factory mounting locations on the frame using the supplied  $\frac{1}{2}$ "x $\frac{1}{2}$ " Hex bolts, nuts and washers. The rear side brace mounts will line up with the tow hook mounts on the underneath of the frame horns. Leave loose)
2. Use the factory hardware removed from step 2 in the bumper removal to re-install tow hooks and rear cross brace mounts. If not equipped, use remaining hardware to install. (leave loose)





**3.** Install the skid plate using the supplied 3/8" x 1" Button head nuts and washers. The front of the skid plate will mount on top of the RDS lower valance and the rear of the skid plate will mount to the cross member bracket below. **Note: The small washer installs on the front of the button head and the large washer mounts on the back side.**



- 4.** Adjust bumper to desired position and tighten all hardware.  
**5.** Adjust skid plate where it is flush on both sides and tighten all hardware.  
**6.** Your install is now complete.