

INSTALLATION MANUAL

FSC241BL1

Level of Difficulty

Moderate

Installation difficulty levels are based on time and effort involved and may vary depending on the installer level of expertise, condition of the vehicle and proper tools and equipment.

Parts List

Qty	Description
1	DS Mounting plate
1	PS Mounting plate
1	DS Bottom bracket
1	PS Bottom bracket
1	DS Light mount bracket
1	PS Light mount bracket
1	DS Air duct bracket
1	PS Air duct bracket
1	Grill insert 2
4	Rubber grommet
4	Hex head bolt, 1/2"-13 x 5", grade 8
10	Hex head bolt, 1/2"-13 x 1 3/4", grade 8
28	Flat washer, 1/2"
14	Lock washer, 1/2"
14	Hex nut, 1/2"-13
6	Carriage bolt, 3/8"-16 x 1" grade 5
6	Flange nut, 3/8"-16
8	Black button head bolt, 1/4"-20 x 3/4"
21	Black kep nut, 1/4"-20
1	Summit Front Bumper

* Footnote

Tools Required

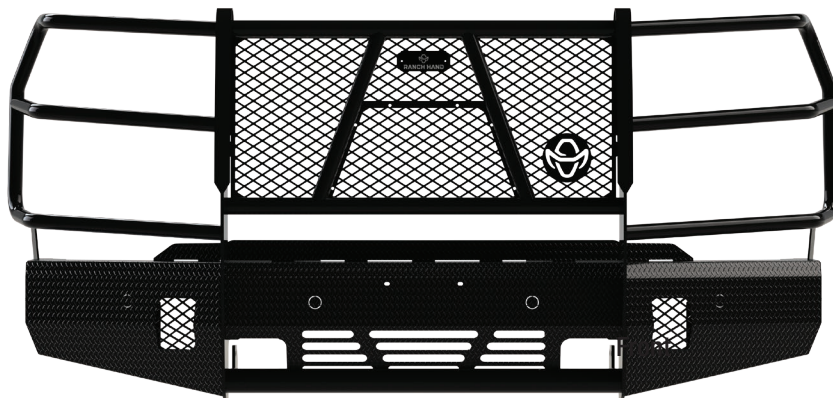
SAE Socket Set	SAE Wrenches
Metric Socket Set	Torque wrench
Allen wrench, 5/32"	Metric Wrenches
18mm ratchet wrench (optional)	Flat and/or Phillips Screwdriver
Extension (optional)	--

Torque Specifications

Bolt, M12	59 ft-lbs.
Bolt, gr5, 1/2"	75 ft-lbs.
Bolt, gr8, 1/2"	110 ft-lbs.

Use above torque setting unless otherwise noted

Product Photo



NOTICE

Visit www.ranchhand.com for a full-color copy of this instruction manual, as well as helpful videos, guides and much more!

Before you begin installation, read all instructions thoroughly.

Proper tools will improve the quality of installation and reduce the time required.

Always disconnect the vehicle battery before removing sensors or disconnecting wiring harnesses. Ranch Hand is not responsible for sensor miscalibration or accidental deployment of airbags during installation.

Always mark the orientation of sensors prior to removal from the factory bumper. Many vehicle sensors are calibrated to a particular orientation, and reinstallation sideways or upside down will impact vehicle performance. A piece of masking tape, a grease pencil, or other mark to indicate the sensor's original orientation will help to ensure proper re-installation.

Periodic inspection of your product should be performed to ensure all hardware and / or components remain secure.

To help prevent damage to the product or vehicle, refer to the specified torque specifications when securing hardware during the installation process.

Be sure to inspect and test fit product before having it coated or painted.

Ranch Hand will not be responsible for the cost of the coating if any problems with fit or finish are not noted and addressed beforehand.

Maintenance

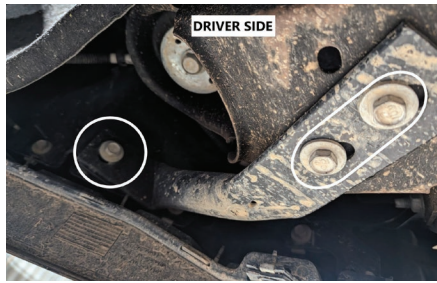
Mild automotive detergent may be used to clean the product. Do not use dish detergent, abrasive cleaners, abrasive pads, wire brushes or other similar products that may damage the finish.

Product Registration and Warranty

Ranch Hand stands behind our products with industry-leading warranties. To get copies of the product warranties, register your purchase or provide feedback, visit: warranty.curtgroup.com/surveys

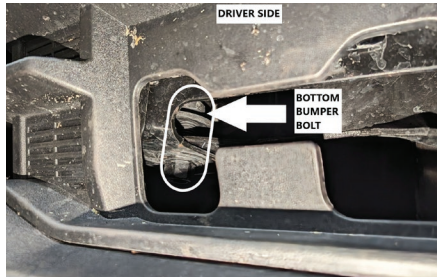
Step 1

Remove the bumper side brackets. There will be two 15mm bolts to the frame and one 15mm bolt to the bumper on each side.



Step 2

Use an 18 mm wrench or ratchet wrench (preferred) to remove the tow hooks by removing the two 18mm bolts, two on each side, to reach the bottom bumper bolts.



Step 3

Remove the bottom bumper bolts.

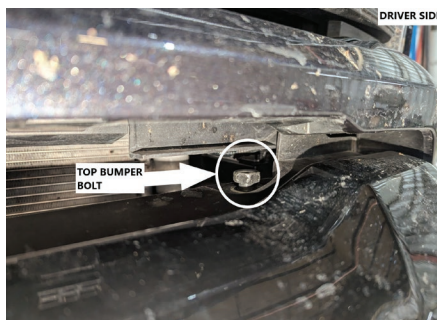
Step 4

If fog lights and/or sensors are present, unplug the main wiring harness located on the passenger side frame.

Note: On diesel models, unplug the block heater plug located on the driver side frame as well.

Step 5

Use an 18mm wrench or ratchet wrench to remove the top bumper bolts, located between the grille and bumper opening.



Step 6

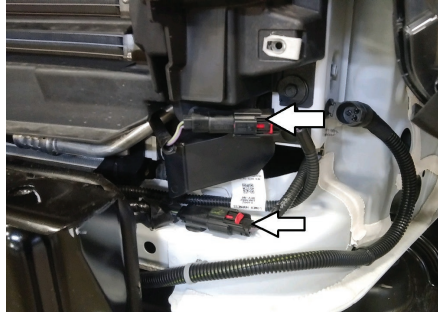
Remove the bumper.

Step 7

Lay the bumper on a protective surface. Remove the sensor and fog light wiring harness and block heater plug (if present) from the bumper.

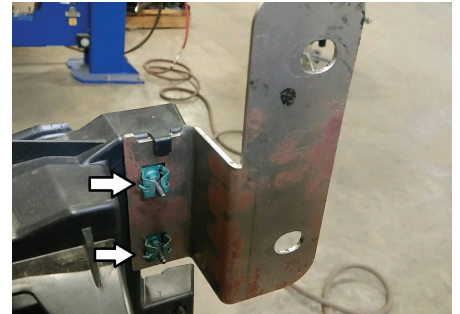
Step 8

Unplug and remove the lower louvered air duct panel.



Step 9

Pop out the clips and insert the clips in the brackets provided.



Step 10

Remove the two black bumper mounting plates by removing the (4) 15mm bolts.

Step 11

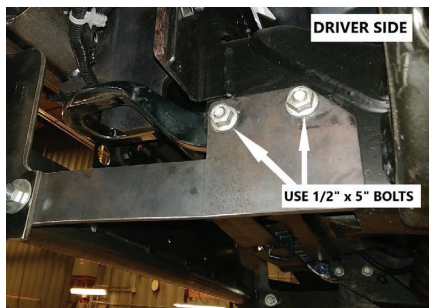
Install the mounting plates to the frame by reusing the factory bolts. The gussets of the mounting brackets will be facing the inside.

Step 12

Mount the front end to the outside of the mounting plates. Use $\frac{1}{2}$ " x $1\frac{3}{4}$ " bolts, washers, lock washers and nuts. Level the front end and tighten the top two bolts. The lower bolt will need to be removed to install the fog light brackets.

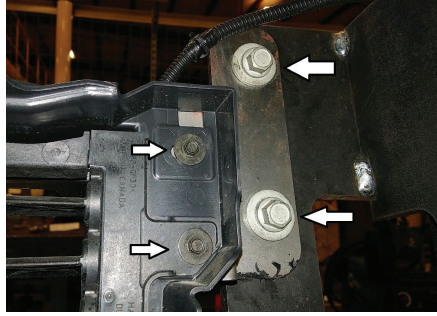
Step 13

Reinstall the tow hooks and install the bottom brackets to the outside of the frame. Use the 5" x $\frac{1}{2}$ " bolts to install. Use the $\frac{1}{2}$ " x $1\frac{3}{4}$ " bolts, washers, lock washers and nuts to mount the bottom bracket to the front end.



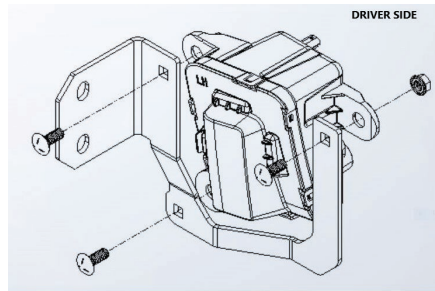
Step 14

Mount the louvered air duct and brackets to the inside bolts of the replacement bumper.



Step 15

Install the fog lights to the light brackets by using the 3/8" carriage bolts and flange nuts. The light bracket will be mounted to the front end using 1/2" x 1 3/4" bolts, washers, lock washers and nuts.



Step 16

Hook up the sensor and fog light wires. Use the rubber grommets to install the sensors. The wires may be run through the square opening in the mounting brackets just below the top plate.

Step 17

Locate the knock-out plug on the driver's side end cap. For diesel motors, punch out the opening to install the block heater plug.



Step 18

Mount the license plate small holes in the center of the bumper using the 1/4" black button head screws and nuts.

Step 19

If the vehicle does not have a camera, install small insert by using the 1/4" black button head screws and nuts.