

INSTALLATION MANUAL

**FBD251BLR-
FSD251BL1**

Level of Difficulty

Moderate

Installation difficulty levels are based on time and effort involved and may vary depending on the installer level of expertise, condition of the vehicle and proper tools and equipment.

Parts List

Qty	Description
1	DS mounting plate
1	PS mounting plate
1	DS fog light mounting bracket
1	PS fog light mounting bracket
1	Grill insert 2
4	Hex head bolt, 1/2"-13 x 4", grade 8
8	Hex head bolt, 1/2"-13 x 2", grade 8
24	Flat washer, 1/2"
12	Hex lock nut, 1/2"-13
4	Hex head bolt, 3/8"-16 x 1 1/2", grade 5
8	Flat washer, 3/8"
4	Lock washer, 3/8"
4	Hex nut, 3/8-13
11	Black button head bolt, 1/4"-20 x 3/4"
11	Black kep nut, 1/4"-20
8	Hex head bolt, 1/4"-20 x 1", grade 5
8	Hex kep nut, 1/4"-20
1	Sensor extension harness
6	Rubber grommet
1	Front bumper replacement

Product Photo



NOTICE

Visit www.ranchhand.com for a full-color copy of this instruction manual, as well as helpful videos, guides and much more!

Before you begin installation, read all instructions thoroughly.

Proper tools will improve the quality of installation and reduce the time required.

Periodic inspection of your product should be performed to ensure all hardware and / or components remain secure.

To help prevent damage to the product or vehicle, refer to the specified torque specifications when securing hardware during the installation process.

Be sure to inspect and test fit product before having it coated or painted. Ranch Hand will not be responsible for the cost of the coating if any problems with fit or finish are not noted and addressed beforehand.

Maintenance

Mild automotive detergent may be used to clean the product. Do not use dish detergent, abrasive cleaners, abrasive pads, wire brushes or other similar products that may damage the finish.

Tools Required

Ratchet	Tape measure
SAE wrenches	Utility knife
SAE socket set	Allen wrench, 5/32"
Metric wrenches	Torque wrench
Metric socket set	Extension (optional)

Product Registration and Warranty

Ranch Hand stands behind our products with industry-leading warranties. To get copies of the product warranties, register your purchase or provide feedback, visit: warranty.curtgroup.com/surveys

Torque Specifications

Metric	Metric		SAE	SAE	
	Bolt	Torque		Bolt	Torque
	M12 bolt	59 ft.-lbs.		3/8" bolt gr5	30 ft.-lbs.
	M14 bolt	139 ft.-lbs.		1/2" bolt gr8	110 ft.-lbs.

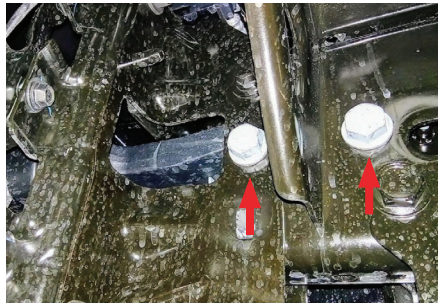
Step 1

Begin by locating the fog light / sensor wiring harness. The wiring harness is located just above the driver side fog light.



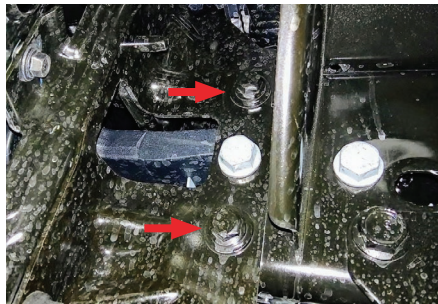
Step 2

Remove the factory tow hooks by taking off the two 24mm bolts.



Step 3

Uninstall the factory bumper by removing the two 18mm bolts.



Step 4

Remove the fog lights and mount them to the fog light brackets.



Step 5

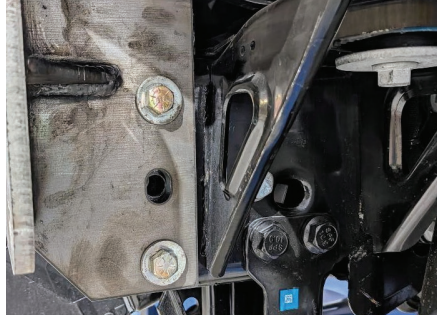
Remove the wiring harness from the factory bumper. Install it in the front bumper replacement. If sensors are present remove the knockouts and install the provided grommets then sensors. You can use WD-40 to help with sensor installation.

Note: You will need to use the pigtail provided for the passenger side middle sensor.

Step 6

Mount the mounting plates to the outside of the frame. The angle iron will rest on top of the frame.

Note: The two holes where the factory bumper was mounted may have to be drilled out to $\frac{1}{2}$ ". Use the $\frac{1}{2}$ " x 4" bolts, washers and lock nuts in the top and bottom holes.



Step 7

Install the Ranch Hand bumper to the mounting plate using the $\frac{1}{2}$ " x 2" bolts, washers and lock nuts. Center and level the bumper then tighten bolts.

Step 8

Reinstall the tow hooks using the factory bolts.

Step 9

FBD251BLR: Mount the fog light bracket to the back two lower $\frac{7}{16}$ " slotted holes.

FSD251BL1: Mount the fog light bracket to the front two upper $\frac{7}{16}$ " slotted holes. Level the fog light through the opening in the skirt and use the $\frac{3}{8}$ " x $1\frac{1}{2}$ " bolts, washers, lock washers and nuts provided.

Step 10

Plug in the fog light / sensor harness.

Note: We advise securing the wiring / sensor harness with a zip-tie.

Step 11

If your truck does not have a front camera, install the center insert. Use the black $\frac{1}{4}$ " Button head bolts and nuts.