

# INSTALLATION MANUAL

## FSD25HBL1

### Level of Difficulty

Moderate

Installation difficulty levels are based on time and effort involved and may vary depending on the installer level of expertise, condition of the vehicle and proper tools and equipment.

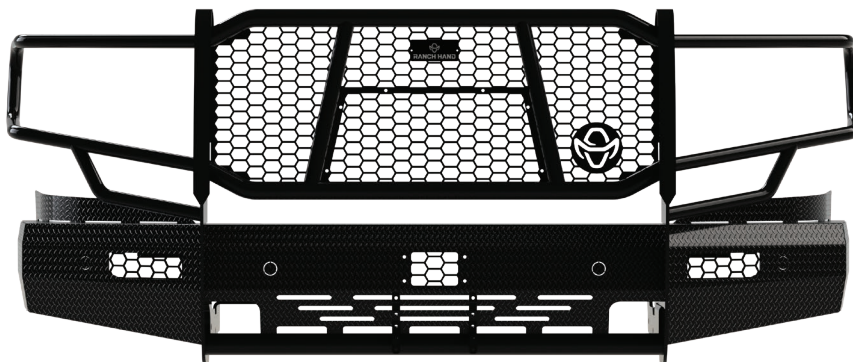
### Parts List

Qty	Description
1	DS Top mounting bracket
1	PS Top mounting bracket
1	DS Bottom bracket
1	PS Bottom bracket
2	Large washer
2	Small washer
2	License plate bracket
1	Adaptive cruise plastic cover
1	Adaptive cruise plastic holder
1	Adaptive cruise insert
1	Grill insert 2
2	Hex head bolt, M14-2.0 x 45mm, 10.9
8	Hex head bolt, ½"-13 x 1 ½", grade 5
18	Flat washer, ½"
8	Lock washer, ½"
8	Hex nut, ½"-13
4	Hex head bolt, 7/16"-14 x 1 ½", gr5
8	Flat washer, 7/16"
4	Lock washer, 7/16"
4	Hex nut, 7/16"-13
4	Black button head bolt, ¼"-20 x 1 ½"
14	Black button head bolt, ¼"-20 x ¾"
18	Black Kep Nut, ¼"-20
2	Sensor extension harness
6	Rubber grommet
1	Grill Guard

### Tools Required

Ratchet	Torque wrench
Socket set	Utility knife
Wrench set	Tape measure
Allen wrench, 5/32"	Extension (optional)

### Product Photo



### NOTICE

Visit [www.ranchhand.com](http://www.ranchhand.com) for a full-color copy of this instruction manual, as well as helpful videos, guides and much more!

Before you begin installation, read all instructions thoroughly.

Proper tools will improve the quality of installation and reduce the time required.

Periodic inspection of your product should be performed to ensure all hardware and / or components remain secure.

To help prevent damage to the product or vehicle, refer to the specified torque specifications when securing hardware during the installation process.

Be sure to inspect and test fit product before having it coated or painted. Ranch Hand will not be responsible for the cost of the coating if any problems with fit or finish are not noted and addressed beforehand.

You will lose your tow hooks on this application.

Will not fit the 2025-up Tungsten models.

### Torque Specifications

Metric	M12 bolt	59 ft-lbs.	SAE	7/16" bolt	50 ft-lbs.
	M14 bolt	139 ft-lbs.		1/2" bolt	75 ft-lbs.

Use above torque setting unless otherwise noted

### Product Registration and Warranty

Ranch Hand stands behind our products with industry-leading warranties. To get copies of the product warranties, register your purchase or provide feedback, visit: [warranty.curtgroup.com/surveys](http://warranty.curtgroup.com/surveys)

### Maintenance

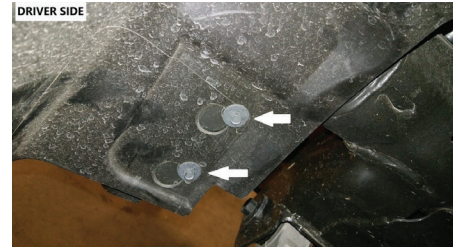
Mild automotive detergent may be used to clean the product. Do not use dish detergent, abrasive cleaners, abrasive pads, wire brushes or other similar products that may damage the finish.

### Step 1

Remove the tow hooks if present. Use 18mm and 21mm sockets to remove.

### Step 2

Remove the front inner fender well. Remove the three 8mm screws from the fender and loosen the two 8mm screws located on the frame.



### Step 3

Unplug the sensor/fog light wiring harness (if applied) on the driver side frame.

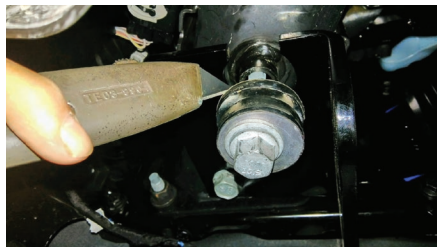
### Step 4

Remove the bumper by removing the three 18mm nuts on each side.



### Step 5

On tow hook models, cut off the rubber boot from around the rear bolt.



### Step 6

There is a driver and passenger mounting bracket. Mount the bracket to the bottom of the frame.

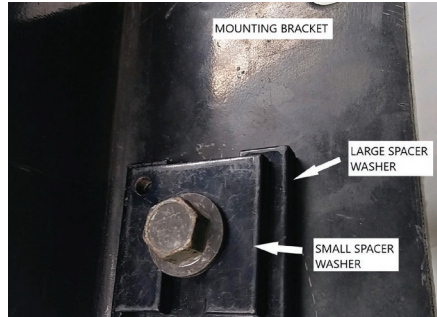


### Step 7

Install the metric bolt (provided) with a washer through the front frame hole.

### Step 8

For the back hole, use one large and one small spacer washer. Place over the factory bolt and hand tighten.

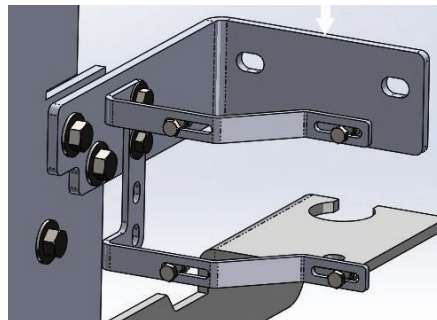


### Step 9

Mount the Summit to the bracket by using the ½" hardware provided. Center the bumper and then tighten bolts. If not centered, move the mounting brackets in increments until centered. Tilt the Summit back or forwards to line up the loops to the headlights.

### Step 10

Install the top mounting brackets. Use the 7/16" hardware to install the brackets to the frame. Use the ½" hardware to install to the uprights.



### Step 11

**IF YOUR VEHICLE DOES NOT HAVE SENSORS AND/OR ADAPTIVE CRUISE, SKIP TO STEP 18. IF SENSORS AND/OR ADAPTIVE CRUISE ARE PRESENT CONTINUE TO STEP 12.**

### Step 12

Lay the factory bumper face down and remove the fog light and bracket.

### Step 13

Remove the louver housing.

### Step 14

Remove the wiring harness, sensors and adaptive cruise module from the bumper.

### Step 15

Mount the adaptive cruise module, adaptive cruise plastic holder and plastic cover to the center hole of the front bumper. Use  $\frac{1}{4}$ " x  $1\frac{1}{2}$ " black button head bolts to install.

(Photo shown without module.)



### Step 16

Install the rubber grommets into the Summit bumper. Install the sensors into the grommets.

Note: A small amount of WD-40 can be used in the grommet to help with sensor install.

### Step 17

Plug in the sensors and adaptive cruise module.

Note: On some applications you will need to unclip the sensor/fog light connector from the frame and zip tied to the frame.

### Step 18

On nonadaptive cruise models, install the mesh insert to the center hole using  $\frac{1}{4}$ " x  $1\frac{1}{2}$ " black button head bolts.

### Step 19

Install the fog light and fog light brackets using instructions for LBD19HBPH.

### Step 20

If the truck does not have a front camera, install the center insert. Use the black  $\frac{1}{4}$ " x  $\frac{3}{4}$ " black button head bolts and nuts to install.

### Step 21

Mount the license plate brackets using four  $\frac{1}{4}$ " x  $\frac{3}{4}$ " black button head bolts and nuts. Then mount the license plate to the brackets using four more  $\frac{1}{4}$ " bolts and nuts.

