



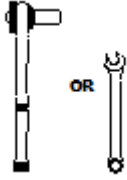
GATORBACK MUDFLAPS

2021-C Buick Encore GX Mud Flap Set, Front Mounting Diagram & Instructions Kit# GCR210F

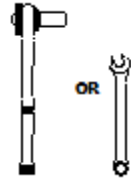
IMPORTANT:

Manufacturer is not responsible for negligent use of vehicle with mud flaps installed, including over-tightening of screws and bolts causing damage to vehicle or mud flaps.

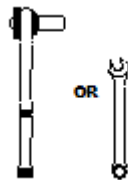
TOOLS REQUIRED-



5/16" Open Wrench or
Socket Wrench



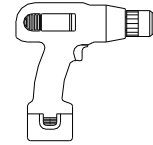
3/8" Open Wrench or
Socket Wrench



1/4" Open Wrench or
Socket Wrench



T15 Torx
Bit



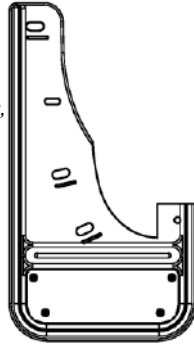
Electric or Rechargeable
Drill



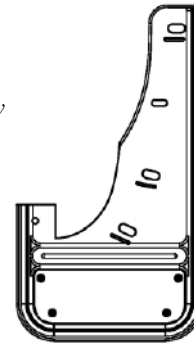
1/4" Drill
Bit

FLAPS

(1) Flap Assembly,
Front, DS

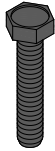


(1) Flap Assembly
Front, PS

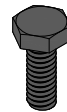


PARTS BAG # 771202

a) (2) Screw, Mach.
10-24x1, Hex Hd Blk Ox.
Part# 012050



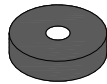
b) (6) Cap Screw
1/4-20 UNC x 5/8", Blk Ox.
Part #014071



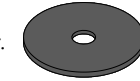
c) (2) Sht Metal Screw
#8-18 x 1.25", Blk Ox.
Part #016061



d) (2) Spacer Washer
5/16" x 1" x 1/4" HDPE
Part #018036



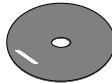
e) (4) Washer, Flat
0.203" x 1" 18g, SS, Blk Ox.
Part #018070



f) (2) Washer, Offset
0.203" x 1.5" Blk Ox.
Part #018080



g) (6) Washer, Mud Flap Clip
0.281" x 1.5" Blk Ox.
Part #018084



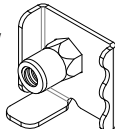
h) (2) Washer, Lock
18-8SS, Helicoil Part
Part #024001



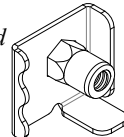
i) (2) Nut, Hex
#10-24, SS
Part # 025003



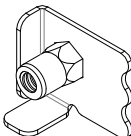
j) (2) Mount Clip, w/Bend
Driver Side
Part #769308



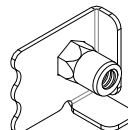
k) (2) Mount Clip w/Bend
Passenger Side
Part #769309



l) (1) Mount Clip
Driver Side
Part #769312

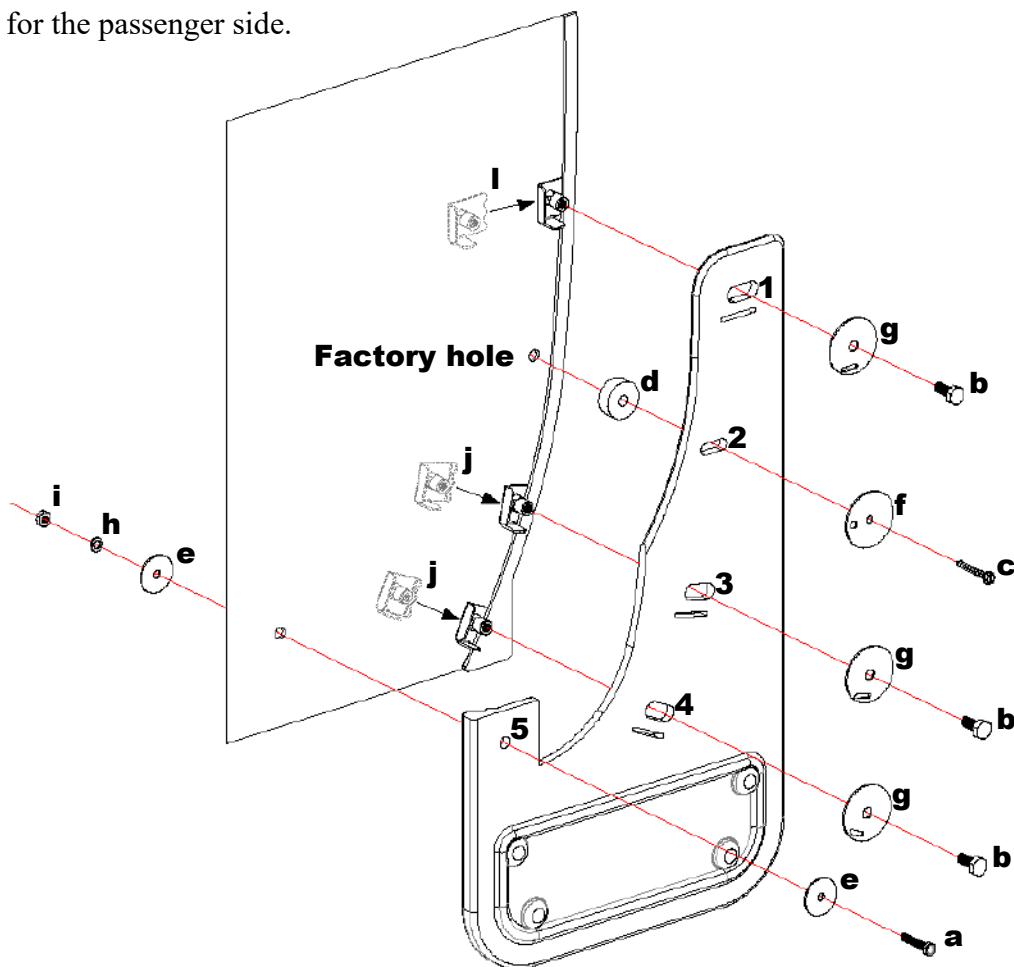


m) (1) Mount Clip
Passenger Side
Part #769313



INSTALLATION *(For ease of installation it is suggested that the wheel be removed)*

1. Before you install your Mud Flap Set, see the diagram and parts list for all necessary parts. Start on the driver's side.
2. Remove factory bolt as shown in diagram below.
3. Loosely install mount clip (l) on hole #1 using a capscrew (b) and slotted washer (g)
4. Loosely install mount clip (j) on mud flap holes #3 & #4 using a cap screw (b) and washer (g).
5. Install mud flap hole #2 to the factory hole using sheet metal screw (c) and offset washer (f), placing a spacer washer (d) between the flap and the wheel well as shown.
6. Slide mud flap clips behind fender lip.
7. With a square or other levelling tool, ensure that the mud flap is level.
8. Carefully tighten all fasteners and ensure that the flap has remained level. We suggest tightening these by hand.
9. Once everything is secure, hold the mud flap tight to the wheel well and use mud flap hole #5 as a guide to drill a 1/4" hole into the factory liner.
10. Install mud flap hole #5 to newly drilled hole in liner using a machine screw (a) and flat washer (e), and secure using a flat washer (e), lock washer (h), and hex nut (i).
11. Repeat procedure for the passenger side.



Please check out our YouTube channel to see an install video for this application.





2021-C Buick Encore GX

Mud Flap Set, Rear

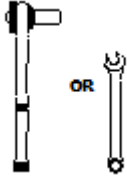
Mounting Diagram & Instructions

Kit# GCR210R

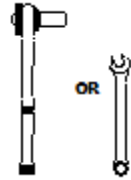
IMPORTANT:

Manufacturer is not responsible for negligent use of vehicle with mud flaps installed, including over-tightening of screws and bolts causing damage to vehicle or mud flaps.

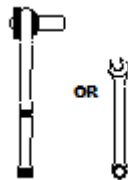
TOOLS REQUIRED-



5/16" Open Wrench or Socket Wrench



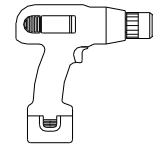
3/8" Open Wrench or Socket Wrench



1/4" Open Wrench or Socket Wrench



T15 Torx Bit



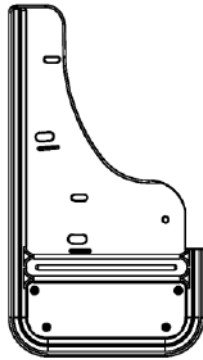
Electric or Rechargeable Drill



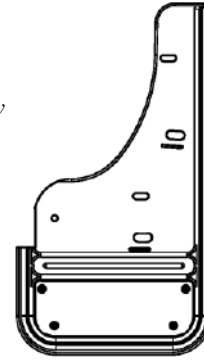
1/4" Drill Bit

FLAPS

(1) Flap Assembly, Front, DS

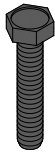


(1) Flap Assembly, Front, PS

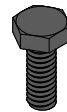


PARTS BAG # 771203

a) (2) Screw, Mach. 10-24x1, Hex Hd Blk Ox. Part# 012050



b) (4) Cap Screw 1/4-20 UNC x 5/8", Blk Ox. Part #014071



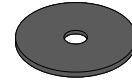
c) (4) Sht Metal Screw #8-18 x 1.5", Blk Ox. Part #016063



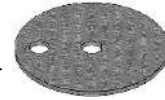
d) (2) Spacer Washer 5/16" x 1" x 1/4" HDPE Part #018036



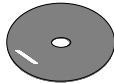
e) (8) Washer, Flat 0.203" x 1" 18g, SS, Blk Ox. Part #018070



f) (2) Washer, Offset 0.203" x 1.5" Blk Ox. Part #018080



g) (4) Washer, Mud Flap Clip 0.281" x 1.5" Blk Ox. Part #018084



h) (2) Washer, Lock 18-8SS, Helicoil Part Part #024001



i) (2) Nut, Hex #10-24, SS Part # 025003



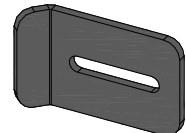
j) (2) Spacer, Nylon 1/2" x 0.257" x 1/2" Part #054063



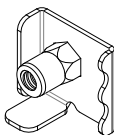
k) (2) Washer, Nylon 0.203" x 0.885" Part #054080



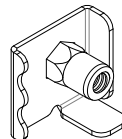
l) (2) J-Clamp 1.5" x 2.5" Anodized Black Part #767417



m) (2) Mount Clip, w/Bend Driver Side Part #769308

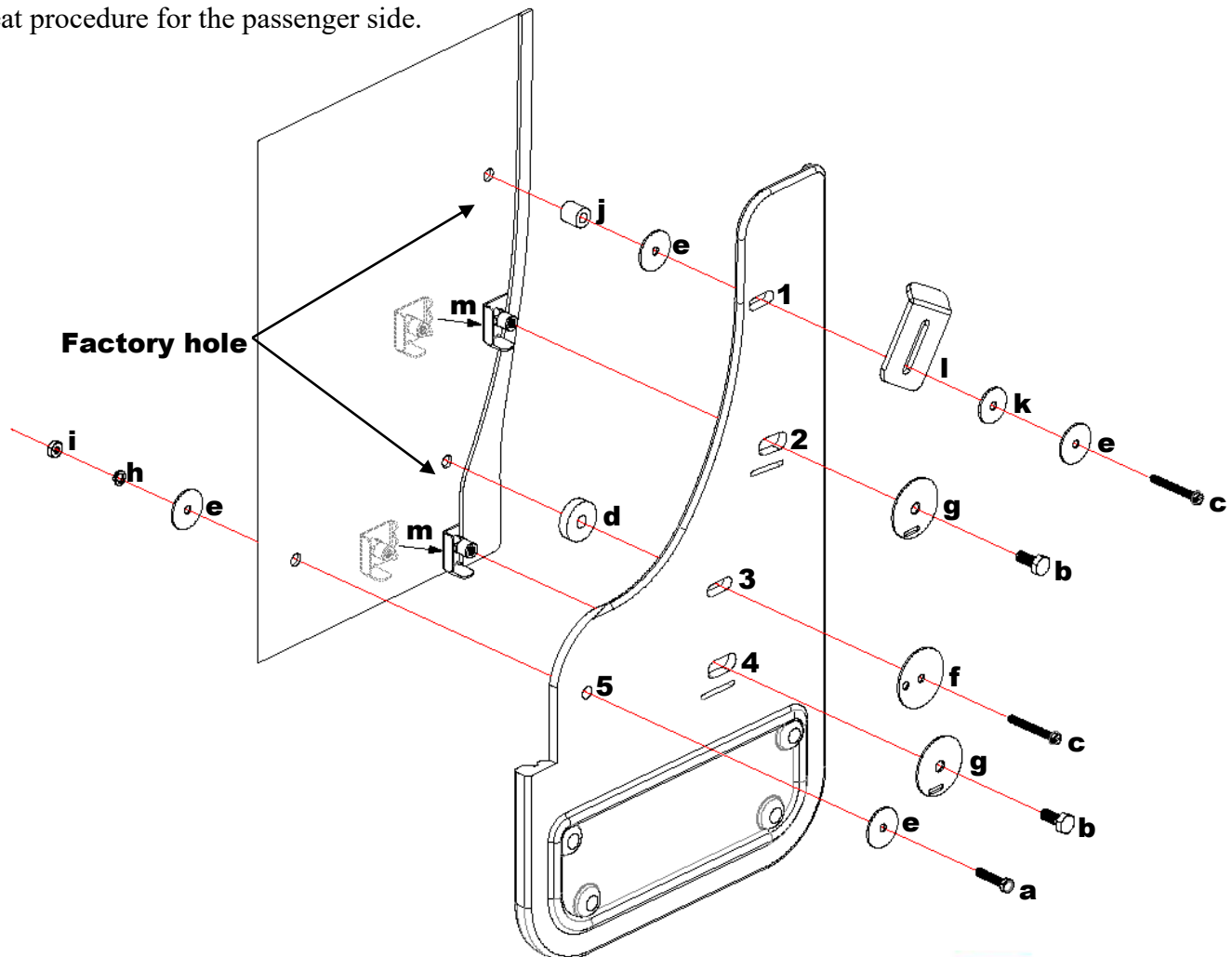


n) (2) Mount Clip w/Bend Passenger Side Part #769309



INSTALLATION *(For ease of installation it is suggested that the wheel be removed)*

2. Before you install your Mud Flap Set, see the diagram and parts list for all necessary parts. Start on the driver's side.
2. Remove 2 factory bolts as shown in diagram below.
3. Loosely install mount clip (m) on holes #2 & #4 using a capscrew (b) and slotted washer (g)
4. Loosely install mud flap hole #3 to factory hole using a sheet metal screw (c) and offset washer (f), placing a spacer washer (d) between the flap and the wheel well as shown.
5. Slide mud flap clips behind fender lip.
6. Install mud flap hole #1 to factory hole using a sheet metal screw (c), flat washer (e), nylon washer (k), and J-Clamp (l), placing a flat washer (e), and nylon spacer (j) between the flap and the wheel well as shown.
7. With a square or other levelling tool, ensure that the mud flap is level.
8. Carefully tighten all fasteners and ensure that the flap has remained level. We suggesting tightening these by hand
9. Once everything is secure, hold the mud flap tight to the wheel well and use mud flap hole #5 as a guide to drill a 1/4" hole into the factory liner.
10. Install mud flap hole #5 to newly drilled hole in liner using a machine screw (a) and flat washer (e), and secure using a flat washer (e), lock washer (h), and hex nut (i).
11. Repeat procedure for the passenger side.



Please check out our YouTube channel to see an install video for this application.

