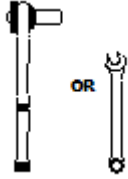


IMPORTANT:

Manufacturer is not responsible for negligent use of vehicle with mud flaps installed, including over-tightening of screws and bolts causing damage to vehicle or mud flaps.

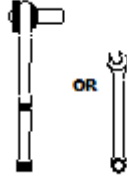


TOOLS REQUIRED-



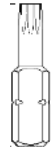
OR

7/16" Open Wrench or
Socket Wrench



OR

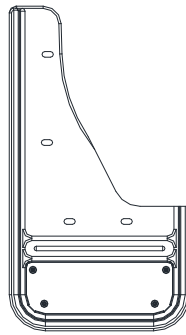
1/4" Open Wrench or
Socket Wrench



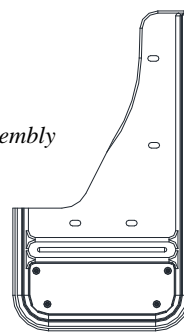
T15 Torx
Bit

FLAPS

(1) Flap Assembly,
Front, DS



(1) Flap Assembly
Front, PS



PARTS BAG # 771289

a) (4) Capscrew
1/4-20 x 3/8", SS, Blk Ox.
Part #014069



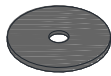
b) (4) Sheet Metal Screw
8-18 x 1.25", SS, Blk Ox.
Part #016061



c) (4) Spacer Washer, HDPE
5/16" x 1" x 1/4"
Part #018036



d) (4) Washer, Flat
0.203" x 1", SS, Blk Ox.
Part # 018070



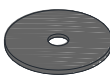
e) (4) Washer, Offset
0.281" x 1.5", SS, Blk Ox.
Part # 018087



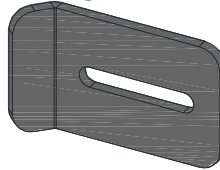
f) (4) Spring Nut, SS
1/4-20 UNC x 0.54" Reach
Part #028010



g) (2) Washer, Nylon
0.203" x 1"
Part #054080



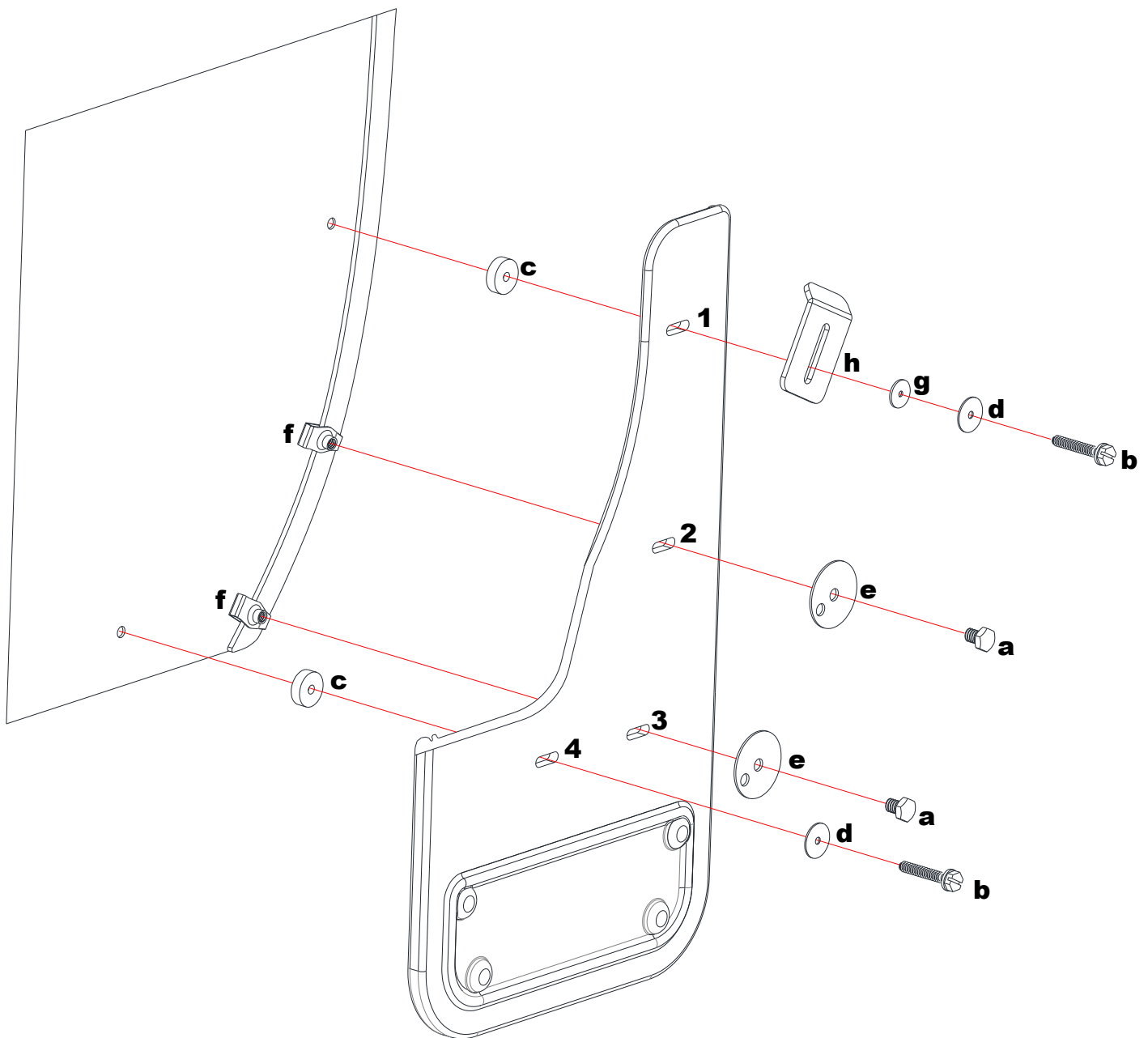
h) (2) J-Clamp
1.5" x 2.5", Anod. Alum.
Part #767417



INSTALLATION (For ease of installation it is suggested that the wheel be removed)

1. Before you install your Mud Flap Set, see the diagram and parts list for all necessary parts. Start on the driver's side.
2. Remove the 2 factory screws from the inner wheel well.
3. Loosely install mud flap hole #1 to factory hole using a sheet metal screw (b), flat washer (d), nylon washer (g), and J-clamp (h), placing a spacer washer (c) between the mud flap and wheel well.

4. Temporarily install mud flap hole #4 to factory hole using sheet metal screw (b) and flat washer (d).
5. Using a bubble level or square, ensure that the mud flap is level, then mark the fender through mud flap holes #2 and #3. Remove hardware from hole #4.
6. Install spring nuts (f) on the fender where it was marked in the previous step.
7. Install mud flap holes #2 & #3 to spring nuts (f) using a capscrew (a) and flat washer (e).
8. Install mud flap hole #4 to the factory hole using a sheet metal screw (b) and flat washer (d), placing a spacer washer (c) between the flap and the wheel well
9. Using a bubble level or square, ensure that the mud flap is level. Viewing the vehicle from the back, the outer edge of the mud flap should appear parallel to the tires.
10. Carefully tighten all fasteners and ensure that the flap has remained level. We suggest doing this by hand to avoid overtightening the fasteners.
11. Repeat procedure for the passenger side.



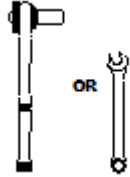
Please check out our YouTube channel to see an install video for this application.



IMPORTANT:

Manufacturer is not responsible for negligent use of vehicle with mud flaps installed, including over-tightening of screws and bolts causing damage to vehicle or mud flaps.

TOOLS REQUIRED-

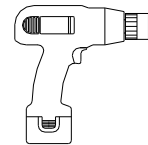


1/4" Open Wrench or
Socket Wrench

OR



Torx
Bit



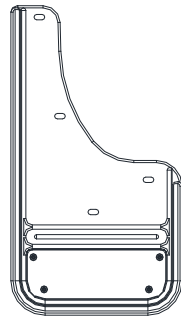
Electric or Rechargeable
Drill



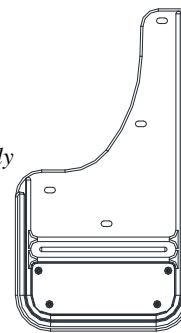
1/4" Drill
Bit

FLAPS

(1) Flap Assembly,
Rear, DS

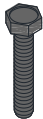


(1) Flap Assembly
Rear, PS



PARTS BAG # 771290

a) (2) Machine Screw
10-24 x 1", SS, Blk Ox.
Part #012050



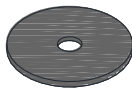
b) (6) Sheet Metal Screw
8-18 x 1.25", SS, Blk Ox.
Part #016061



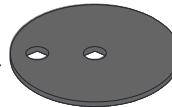
c) (6) Spacer Washer, HDPE
5/16" x 1" x 1/4"
Part #018036



d) (6) Washer, Flat
0.203" x 1", SS, Blk Ox.
Part # 018070



e) (4) Washer, Offset
0.203" x 1.5", SS, Blk Ox.
Part # 018080



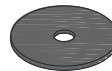
f) (2) Lock Washer
8-18 SS, #10
Part #024001



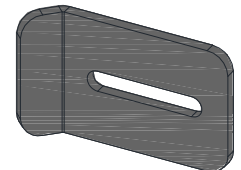
g) (2) Hex Nut
#10-24, SS
Part #025003



h) (2) Washer, Nylon
0.203" x 1"
Part #054080



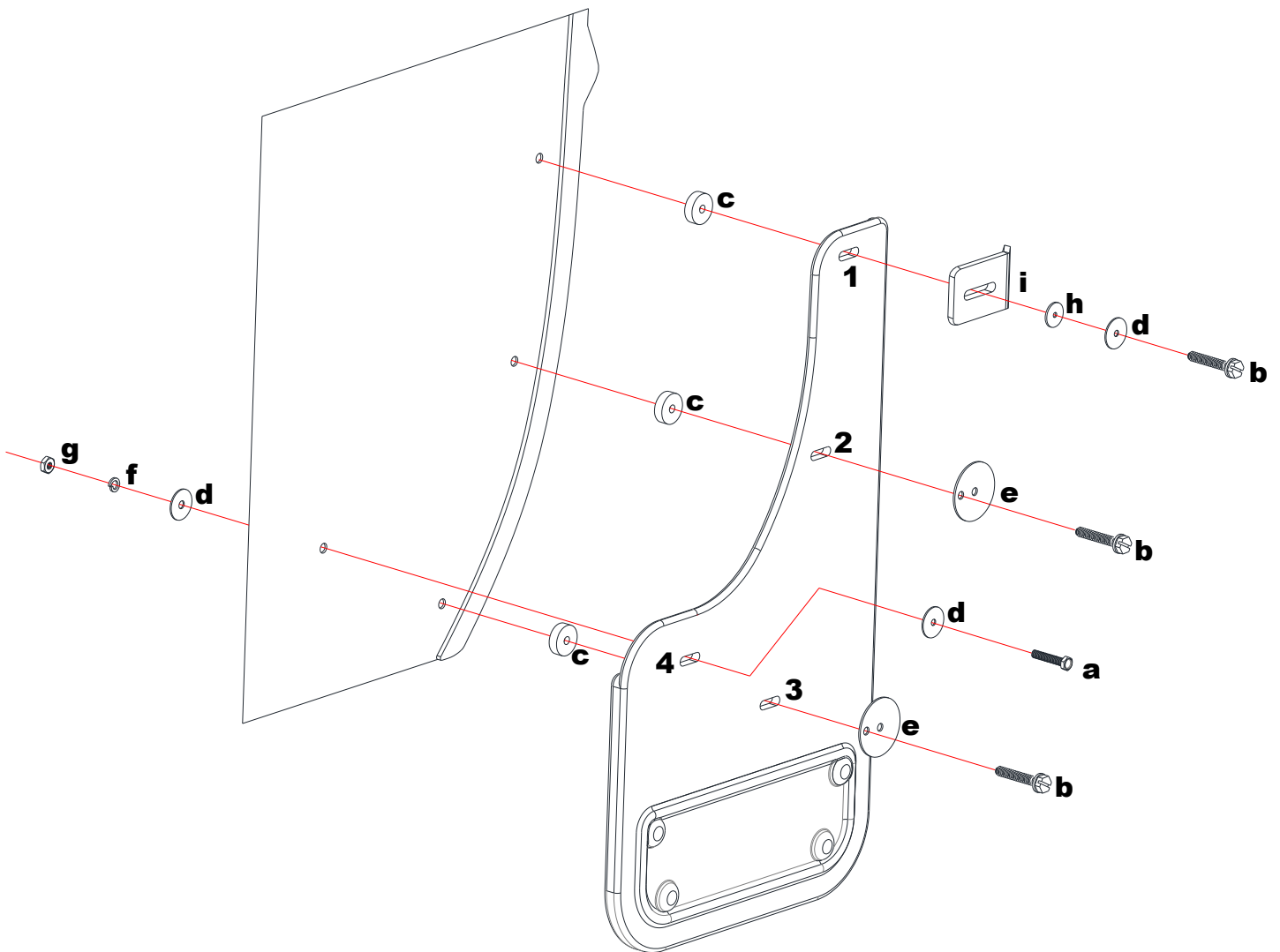
i) (2) J-Clamp
1.5" x 2.5", Anod. Alum.
Part #767417



INSTALLATION (For ease of installation it is suggested that the wheel be removed)

2. Before you install your Mud Flap Set, see the diagram and parts list for all necessary parts. Start on the driver's side.
2. Remove the 3 factory screws from the inner wheel well.

3. Loosely install mud flap holes #2 & #3 to factory holes using sheet metal screw (b) and offset washer (e), placing a spacer washer (c) between the flap and the wheel well. Note – use the outside hole of the offset washer.
4. Loosely install mud flap hole #1 to factory hole using a sheet metal screw (b), flat washer (d), nylon washer (h) and J-clamp (i), placing a spacer washer (c) between the flap and the wheel well.
5. Using a bubble level or square, ensure that the mud flap is level. Viewing the vehicle from the back, the outer edge of the mud flap should appear parallel to the tires.
6. Carefully tighten all fasteners and ensure that the flap has remained level. We suggest doing this by hand to avoid overtightening the fasteners.
7. Slowly, being cautious of what is behind the liner, drill a ¼” hole through the liner using mud flap hole #4 as a guide. Install mud flap hole #4 to this newly drilled hole in the liner using a machine screw (a) and flat washer (d) and secure from the back using a flat washer (d), lock washer (f), and hex nut (g)
8. Repeat procedure for the passenger side.



Please check out our YouTube channel to see an install video for this application.

