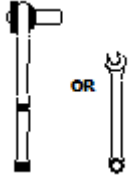


**IMPORTANT:**

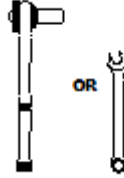
*Manufacturer is not responsible for negligent use of vehicle with mud flaps installed, including over-tightening of screws and bolts causing damage to vehicle or mud flaps.*



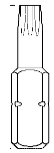
**TOOLS REQUIRED-**



7/16" Open Wrench or  
Socket Wrench



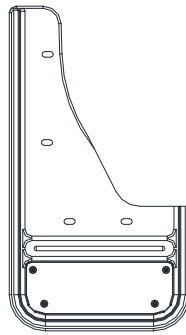
1/4" Open Wrench or  
Socket Wrench



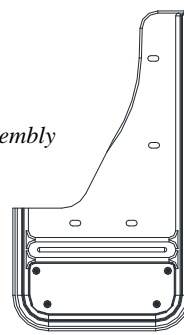
T15 Torx  
Bit

**FLAPS**

(1) Flap Assembly,  
Front, DS



(1) Flap Assembly  
Front, PS



**PARTS BAG # 771289**

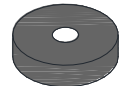
a) (4) Capscrew  
1/4-20 x 3/8", SS, Blk Ox.  
Part #014069



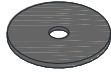
b) (4) Sheet Metal Screw  
8-18 x 1.25", SS, Blk Ox.  
Part #016061



c) (4) Spacer Washer, HDPE  
5/16" x 1" x 1/4"  
Part #018036



d) (4) Washer, Flat  
0.203" x 1", SS, Blk Ox.  
Part # 018070



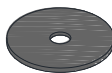
e) (4) Washer, Offset  
0.281" x 1.5", SS, Blk Ox.  
Part # 018087



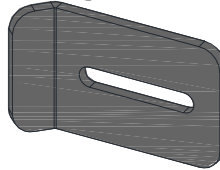
f) (4) Spring Nut, SS  
1/4-20 UNC x 0.54" Reach  
Part #028010



g) (2) Washer, Nylon  
0.203" x 1"  
Part #054080



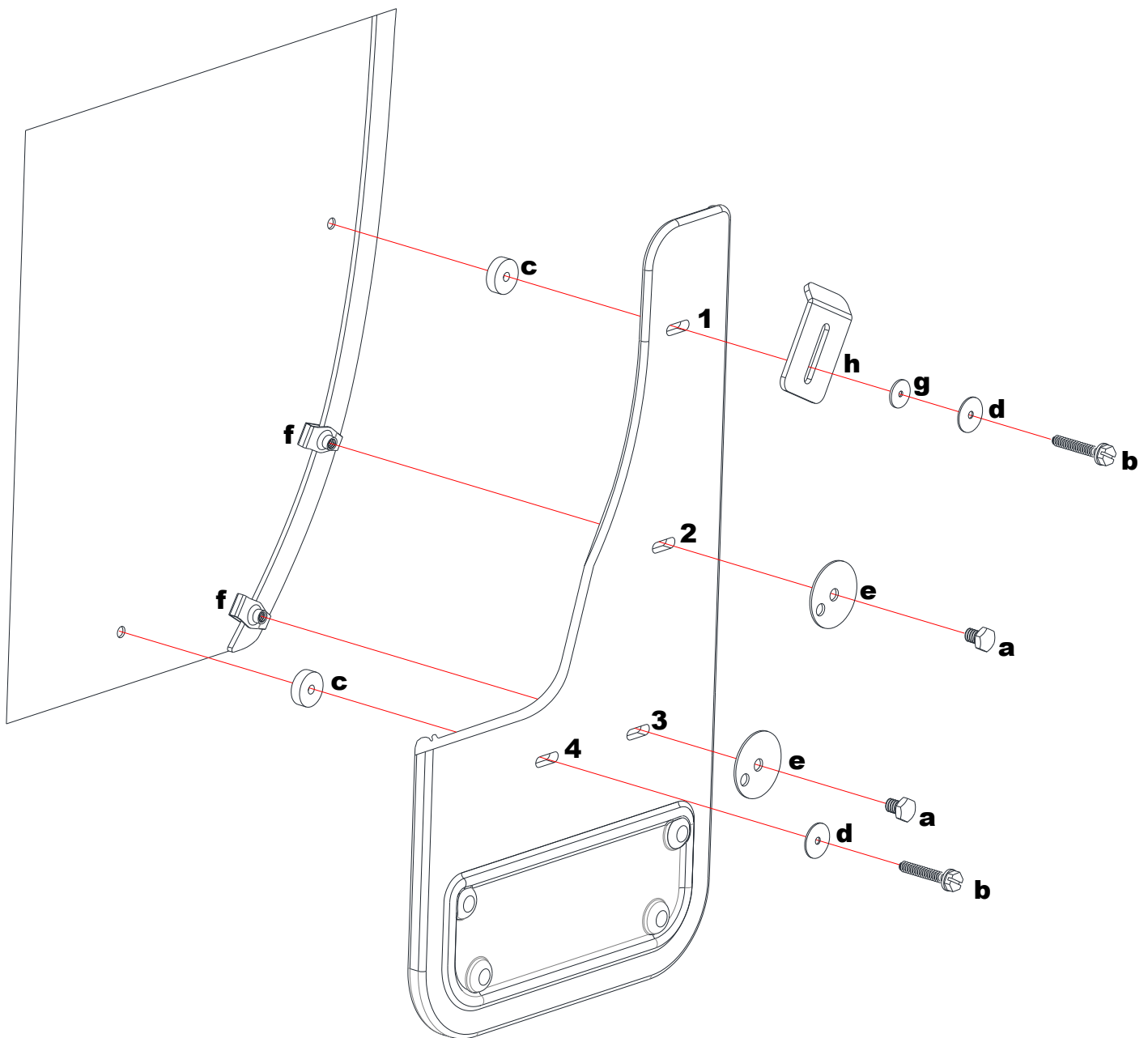
h) (2) J-Clamp  
1.5" x 2.5", Anod. Alum.  
Part #767417



**INSTALLATION** (For ease of installation it is suggested that the wheel be removed)

1. Before you install your Mud Flap Set, see the diagram and parts list for all necessary parts. Start on the driver's side.
2. Remove the 2 factory screws from the inner wheel well.
3. Loosely install mud flap hole #1 to factory hole using a sheet metal screw (b), flat washer (d), nylon washer (g), and J-clamp (h), placing a spacer washer (c) between the mud flap and wheel well.

4. Temporarily install mud flap hole #4 to factory hole using sheet metal screw (b) and flat washer (d).
5. Using a bubble level or square, ensure that the mud flap is level, then mark the fender through mud flap holes #2 and #3. Remove hardware from hole #4.
6. Install spring nuts (f) on the fender where it was marked in the previous step.
7. Install mud flap holes #2 & #3 to spring nuts (f) using a capscrew (a) and flat washer (e).
8. Install mud flap hole #4 to the factory hole using a sheet metal screw (b) and flat washer (d), placing a spacer washer (c) between the flap and the wheel well
9. Using a bubble level or square, ensure that the mud flap is level. Viewing the vehicle from the back, the outer edge of the mud flap should appear parallel to the tires.
10. Carefully tighten all fasteners and ensure that the flap has remained level. We suggest doing this by hand to avoid overtightening the fasteners.
11. Repeat procedure for the passenger side.



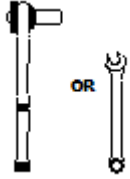
Please check out our YouTube channel to see an install video for this application.



**IMPORTANT:**

*Manufacturer is not responsible for negligent use of vehicle with mud flaps installed, including over-tightening of screws and bolts causing damage to vehicle or mud flaps.*

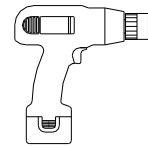
**TOOLS REQUIRED-**



*1/4", 5/16" & 7/16" Open Wrench or Socket Wrench*



*Torx Bit*



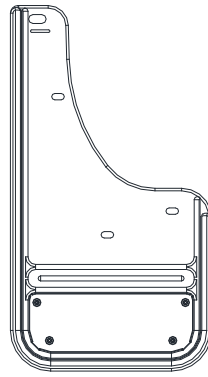
*Electric or Rechargeable Drill*



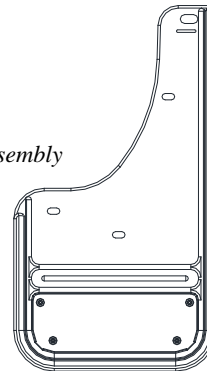
*1/4" Drill Bit*

**FLAPS**

*(1) Flap Assembly, Rear, DS*

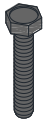


*(1) Flap Assembly Rear, PS*



**PARTS BAG # 771329**

*a) (2) Machine Screw  
10-24 x 1", SS, Blk Ox.  
Part #012050*



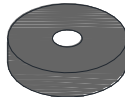
*b) (2) Capscrew  
1/4-20 x 5/8", SS, Blk Ox.  
Part #014071*



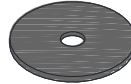
*c) (4) Sheet Metal Screw  
8-18 x 1.25", SS, Blk Ox.  
Part #016061*



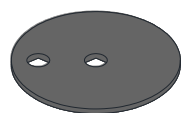
*d) (4) Spacer Washer, HDPE  
5/16" x 1" x 1/4"  
Part #018036*



*e) (6) Washer, Flat  
0.203" x 1", SS, Blk Ox.  
Part # 018070*



*f) (2) Washer, Offset  
0.203" x 1.5", SS, Blk Ox.  
Part # 018080*



*g) (2) Washer, Slotted  
0.281" x 1.5", SS, Blk Ox.  
Part #018084*



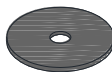
*h) (2) Lock Washer  
8-18 SS,#10  
Part #024001*



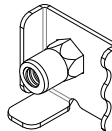
*i) (2) Hex Nut  
#10-24, SS  
Part #025003*



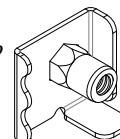
*j) (2) Washer, Nylon  
0.203" x 1"  
Part #054080*



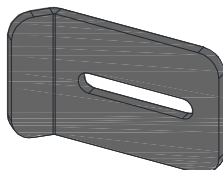
*k) (1) Mount Clip  
DS  
Part #769308*



*l) (1) Mount Clip  
PS  
Part #769309*

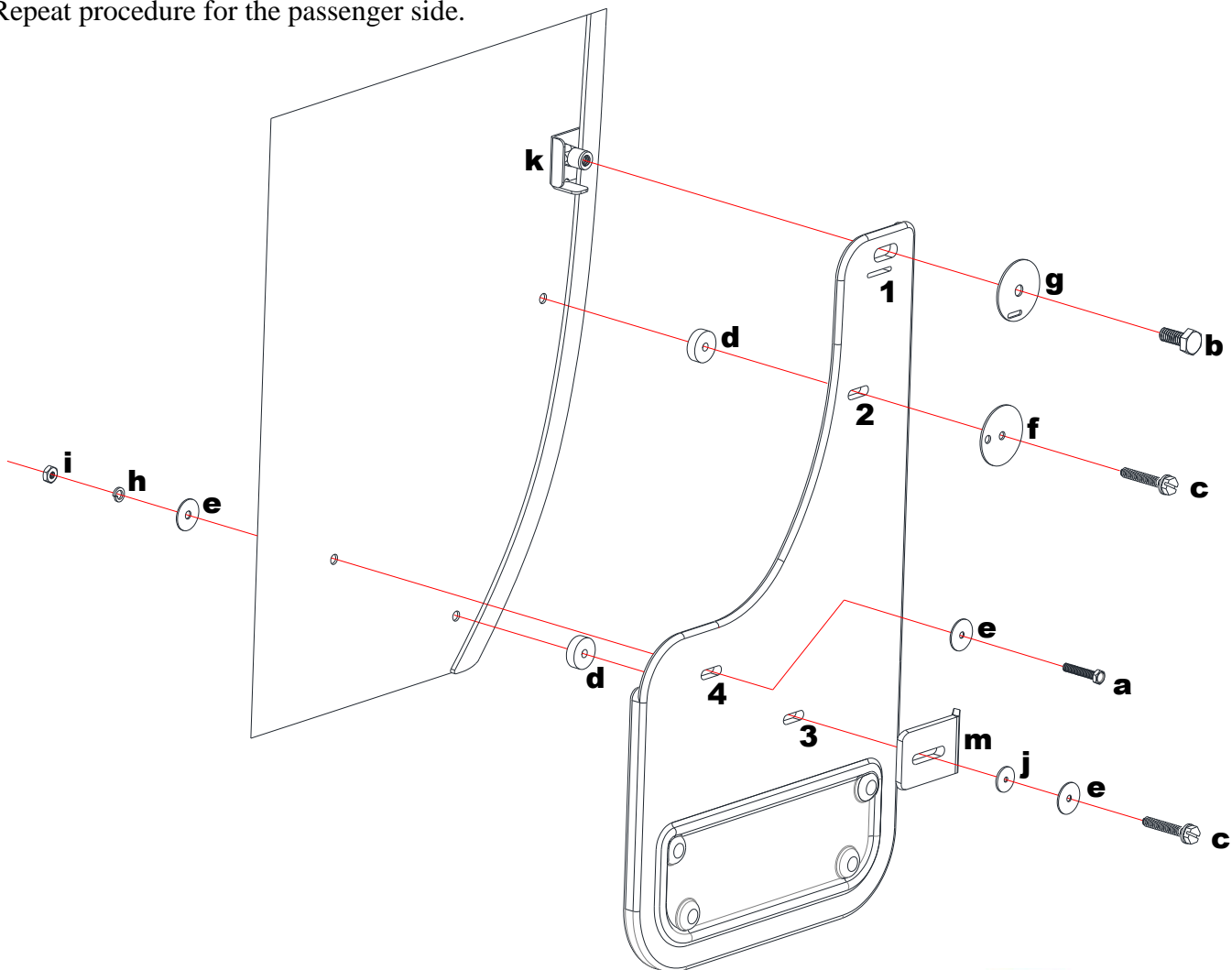


*m) (2) J-Clamp  
1.5" x 2.5", Anod. Alum.  
Part #767417*



## INSTALLATION *(For ease of installation it is suggested that the wheel be removed)*

1. Before you install your Mud Flap Set, see the diagram and parts list for all necessary parts. Start on the driver's side.
2. Remove the 2 factory screws from the inner wheel well.
3. Loosely install mount clip (k) on mud flap hole #1 using a capscrew (b) and slotted washer (g).
4. Loosely install mud flap hole #3 to factory hole using a sheet metal screw (c), flat washer (e), nylon washer (j) and J-clamp (m), placing a spacer washer (d) between the flap and the wheel well.
5. Loosely install mud flap hole #2 to factory hole using a sheet metal screw (c) and offset washer (f), placing a spacer washer (d) between the flap and the wheel well.
6. Slide mount clip (k) behind the fender lip and loosely secure.
7. Using a bubble level or square, ensure that the mud flap is level. Viewing the vehicle from the back, the outer edge of the mud flap should appear parallel to the tires.
8. Carefully tighten all fasteners and ensure that the flap has remained level. We suggest doing this by hand to avoid overtightening the fasteners.
9. Slowly, being cautious of what is behind the liner, drill a ¼" hole through the liner using mud flap hole #4 as a guide. Install mud flap hole #4 to this newly drilled hole in the liner using a machine screw (a) and flat washer (e) and secure from the back using a flat washer (e), lock washer (h), and hex nut (i)
10. Repeat procedure for the passenger side.



Please check out our YouTube channel to see an install video for this application.

