

INSTALLATION MANUAL

GGD251BL1

Level of Difficulty

Moderate

Installation difficulty levels are based on time and effort involved and may vary depending on the installer level of expertise, condition of the vehicle and proper tools and equipment.

Parts List

Qty	Description
1	DS Bottom Bracket
1	PS Bottom bracket
1	DS Top mounting bracket
1	PS Top mounting bracket
2	Top mounting tab
1	Grill insert 2
4	Hex head bolt, 1/2"-13 x 4", grade 8
8	Flat washer, 1/2"
4	Hex lock nut, 1/2"-13
4	Black carriage bolt 3/8"-16 x 1", grade 5
4	Black flange nut, 3/8"-16
4	Black carriage bolt, 1/2"-13 x 1 1/2", grade 5
4	Black flat washer, 1/2"
4	Black hex lock nut, 1/2"-13
7	Black button head bolt, 1/4"-20 x 3/4"
7	Black kep nut, 1/4"-20
1	Grill guard

Tools Required

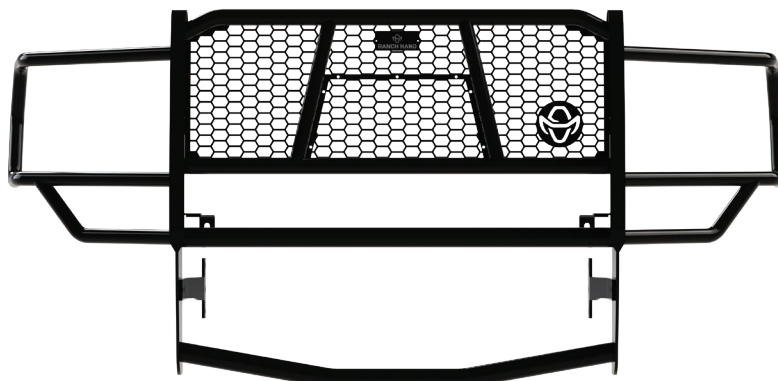
Ratchet	Torque wrench
Socket set	Utility knife
Wrench set	Tape measure
Allen wrench, 5/32"	Extension (optional)

Torque Specifications

1/2" bolt grade 5	75 ft-lbs.
1/2" bolt grade 8	110 ft-lbs.
M12 bolt	59 ft-lbs.

Use above torque setting unless otherwise noted

Product Photo



NOTICE

Visit www.ranchhand.com for a full-color copy of this instruction manual, as well as helpful videos, guides and much more!

Before you begin installation, read all instructions thoroughly.

Proper tools will improve the quality of installation and reduce the time required.

Periodic inspection of your product should be performed to ensure all hardware and / or components remain secure.

To help prevent damage to the product or vehicle, refer to the specified torque specifications when securing hardware during the installation process.

Be sure to inspect and test fit product before having it coated or painted. Ranch Hand will not be responsible for the cost of the coating if any problems with fit or finish are not noted and addressed beforehand.

Product Registration and Warranty

Ranch Hand stands behind our products with industry-leading warranties. To get copies of the product warranties, register your purchase or provide feedback, visit: warranty.curtgroup.com/surveys

Maintenance

Mild automotive detergent may be used to clean the product. Do not use dish detergent, abrasive cleaners, abrasive pads, wire brushes or other similar products that may damage the finish.

Step 1

Begin by trimming the plastic shield between the factory grille and bumper. This is where the top brackets will come out from behind the bumper. (Photo is shown with the bumper off for clarity and location. You do not have to remove the bumper).



Step 2

Remove the tow hooks and the factory bumper bolts.

Step 3

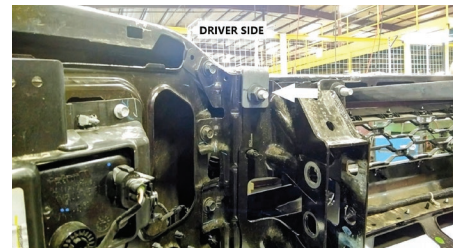
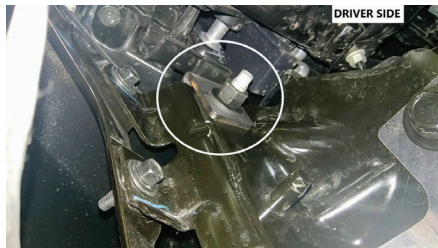
Install the bottom brackets along with tow hooks. Reuse the factory bumper bolts and nuts in the top and bottom holes. For the center tow hook hole, use $\frac{1}{2}$ " x 4" bolts, washers, lock washer and nut.



Step 4

Install top mounting bracket. The bracket will be installed from the bottom side of the truck. Remove the top nut of the bumper bracket. Slide the flat side of the top bracket through the opening of the bumper and grille.

(1st Photo is shown from looking up from under the truck. 2nd photo shown with bumper off for location purposes.)



Step 5

Install the grill guard to the outside of the bottom brackets. Use black $\frac{1}{2}$ " carriage bolts, washers and nuts. Level the grill guard and tighten nuts.



Step 6

Install the top mounting tabs (It will be the “L” shaped brackets). The mounting tab will bolt the top bracket to the upright. Use the black 3/8” carriage bolts and nuts.



Step 7

If your truck does not have a front camera, install the center insert. Use the black 1/4” Button head bolts and nuts to install.