

INSTALLATION MANUAL

GGD25HBL1

Level of Difficulty

Moderate

Installation difficulty levels are based on time and effort involved and may vary depending on the installer level of expertise, condition of the vehicle and proper tools and equipment.

Parts List

Item	Qty	Description
1	1	Bottom bracket, driver side
2	1	Bottom bracket, passenger side
3	1	Support bracket, driver side
4	1	Support bracket, passenger side
5	2	Large washer
6	2	Small washer
7	1	Grill insert 2
8	2	Hex head bolt, M14-2.0 x 45mm
9	4	Hex head bolt, 1/2"-13 x 1-1/2"
10	10	Flat washer, 1/2"
11	4	Lock washer, 1/2"
12	4	Hex nut, 1/2"-13
13	4	Black carriage bolt, 1/2"-13 x 1-1/2"
14	4	Black hex lock nut, 1/2"-13
15	4	Black flat washer, 1/2"
16	9	Black button head bolt, 1/4"-20 x 3/4"
17	9	Black kep nut, 1/4"-20
18	1	Grille guard

Tools Required

Ratchet	Tape measure
SAE socket set	Utility knife
SAE wrenches	Torque wrench
Metric socket set	Allen wrench, 5/32"
Metric wrenches	Extension (optional)

Torque Specifications

Metric	M12 bolt	59 ft.-lbs.
	M14 bolt	139 ft.-lbs.
SAE	1/2" bolt, grade 5	75 ft.-lbs.

Use above torque setting unless otherwise noted

Product Photo



NOTICE

Visit www.ranchhand.com for a full-color copy of this instruction manual, as well as helpful videos, guides and much more!

Before you begin installation, read all instructions thoroughly.

Proper tools will improve the quality of installation and reduce the time required.

Periodic inspection of your product should be performed to ensure all hardware and / or components remain secure.

To help prevent damage to the product or vehicle, refer to the specified torque specifications when securing hardware during the installation process.

Tow hooks will need to be removed for install.

Will not fit the 2025 and after Tungsten models. The 2025 and after models with sensors will require the sensor relocation and bar PSD25HBL1.

Be sure to inspect and test fit product before having it coated or painted.

Ranch Hand will not be responsible for the cost of the coating if any problems with fit or finish are not noted and addressed beforehand.

Maintenance

Mild automotive detergent may be used to clean the product. Do not use dish detergent, abrasive cleaners, abrasive pads, wire brushes or other similar products that may damage the finish.

Product Registration and Warranty

Ranch Hand stands behind our products with industry-leading warranties. To get copies of the product warranties, register your purchase or provide feedback, visit: warranty.curtgroup.com/surveys

Step 1

Remove the tow hooks with 18mm and 21mm sockets and be sure to detach the plastic trim piece that is located around the tow hooks if necessary.

On non-tow hook models remove the plastic insert that covers the tow hook opening.

Step 2

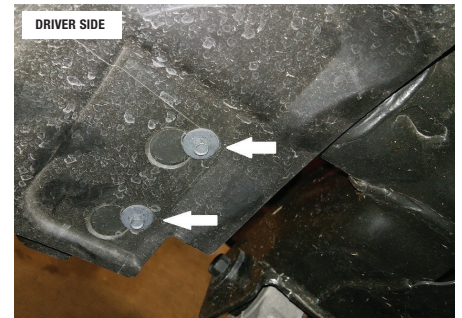
For the 2019-24 models and non-sensor models after 2025, skip to step 10.

For the 2025 and after standard sensor models, continue to step 3.

Step 3

Remove the front inner fender well.

Remove the three (3) 8mm screws from the fender and loosen the two (2) 8mm screws located on the frame.

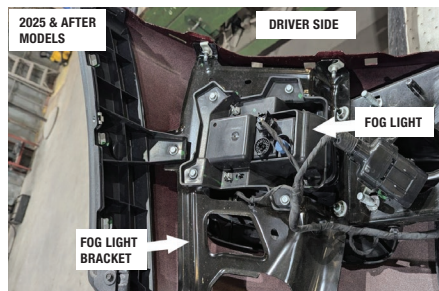
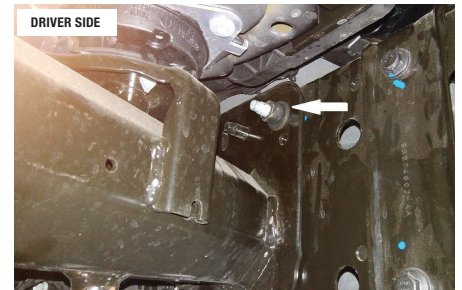
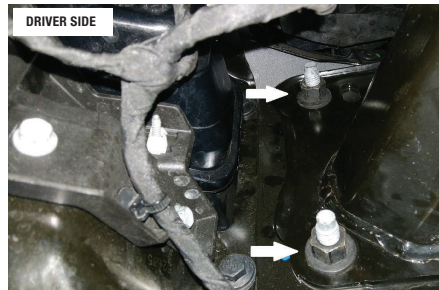


Step 4

If applied, unplug the sensor/fog light wiring harness located on the driver-side frame.

Remove the bumper by removing the three (3) 18mm nuts on each side.

Once the bumper is removed, lay it face down and remove the fog light and bracket.

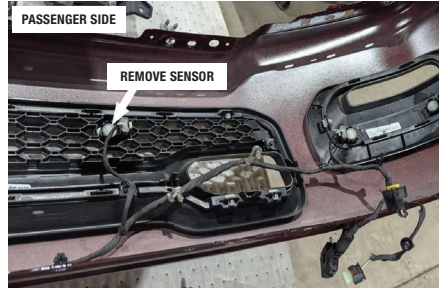
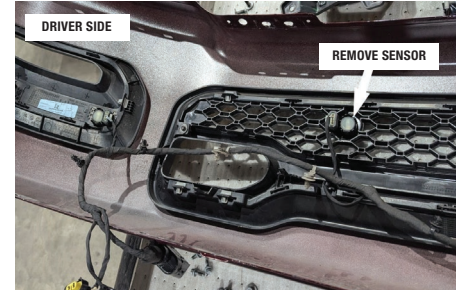
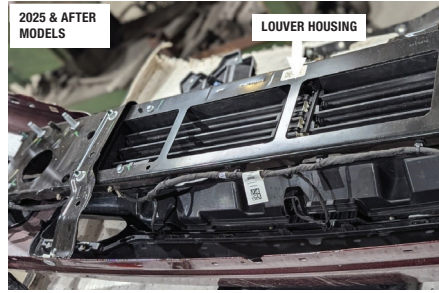


Step 5

Remove the center louver housing.

Disconnect the two center sensors from the sensor housings. Unplug the sensors and plug in the pigtails. Run the pigtails through one of the openings below the sensor hole.

The sensors will be reinstalled after the sensor relocation bar is installed.



Step 6

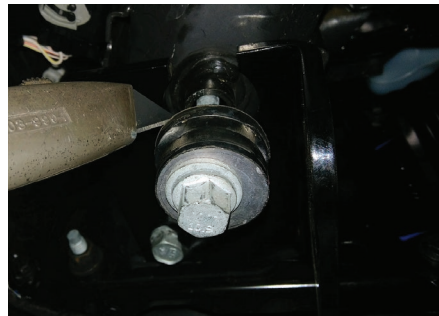
Reinstall the louver housing and fog light/fog light bracket.

Step 7

Reinstall the bumper and the fender well with the provided screws.

Step 8

Cut off the rubber boot from around the 18mm bolt located on the rear of the vehicle.

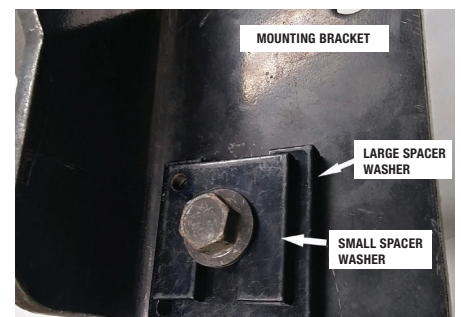


Step 9

Slide the driver and passenger side mounting brackets through the front of the opening while lining it up to the bolt and the hole of the bottom of the frame.

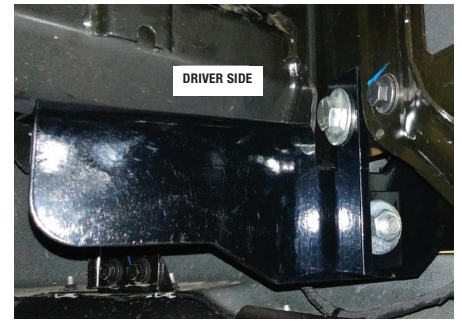
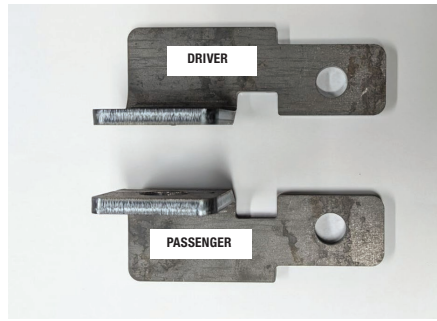
Install the provided metric bolt with a washer through the front frame hole.

For the back hole, use one large and one small spacer washer. Place over the factory bolt and hand tighten.



Step 10

Mount the driver and passenger support brackets to the bottom hole of the bumper bracket. Use 1/2" hardware to install.



Step 11

Mount the grille guard to the mounting bracket loosely with 1/2" carriage bolts to install.

Step 12

Check to see if the grille guard is centered from left to right and move the mounting brackets accordingly to fit center. Once centered, tighten the mounting bracket bolts.

Step 13

Tilt the grille guard back or forward to line up the loops to the headlights. Once lined up, tighten the carriage bolts.

Step 14

If the truck does not have a front camera, install the center insert. Use the black 1/4" hardware to install.

Step 15

Install the rubber grommets into the sensor relocation bar. Clip the sensors into the pigtail with a little WD-40 to lubricate inside the grommet and push the sensors into it.

Step 16

Install the black button plugs by filling in the center factory sensor holes.