

Parts List

1	Driver / left side bar
1	Passenger / right side bar
8	Mounting bracket, universal
13	Clip nut, 8mm
17	Hex bolt, 8mm x 25mm
17	Flat washer, 8mm
17	Lock washer, 8mm
17	Hex bolt, 10mm x 30mm
19	Flat washer, 10mm
18	Lock washer, 10mm
1	Bolt plate, 10mm
2	Hex nut, 10mm
1	Plastic bolt retainer, 10mm
1	Def-tank L-bracket
1	Def-tank support bracket

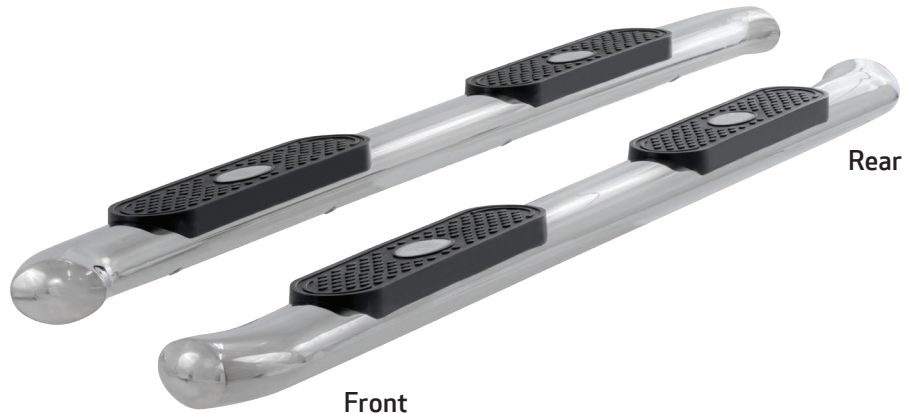
Level of Difficulty

Easy



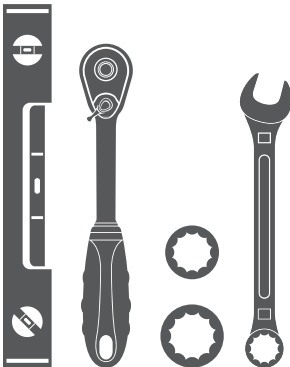
Scan for helpful install tips

Product Image



Tools Required

Ratchet	Socket, 16mm
Wrench, 16mm	Socket, 13mm
Level	



Notes and Maintenance

Before you begin installation, read all instructions thoroughly.

Proper tools will improve the quality of installation and reduce the time required.

To protect the product, wax after installing. Regular waxing is recommended to add a protective layer over the finish. Do not use any type of polish or wax that may contain abrasives that could damage the finish.

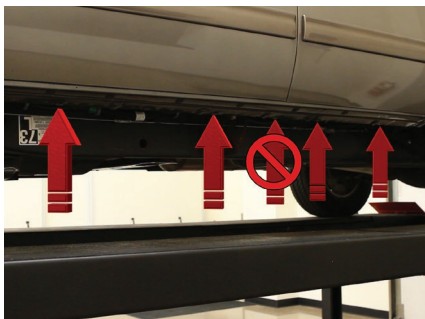
For stainless steel, polish may be used to clear small scratches and scuffs on the finish. Mild soap may be used also to clean the product.

Always start threaded fasteners by hand and finish tightening with a wrench. Do not use an impact driver as this may result in cross-threading and cause damage to the side bar.

Step 1

Locate the five mounting tabs along the bottom edge of the vehicle body.

This installation will use the first, second, fourth and fifth mounting tabs.



Step 2

Starting at the front driver side mounting location, locate the threaded hole on the inside of the body panel.

Attach a universal mounting bracket to the body panel using an 8mm hex bolt with a lock and flat washer.

Snug the hardware, but do not fully tighten.



Step 3

Rotate the bottom of the bracket to the side to expose the hole in the mounting tab.

Slide an 8mm clip-nut over the mounting tab and rotate the bracket back into position.

Secure the bracket with a second 8mm hex bolt, lock washer and flat washer.

Snug the hardware, but do not fully tighten.



Step 4

Repeat steps 2 and 3 to install the second bracket over the second mounting tab location from step 1.



Step 5

Locate the fourth mounting tab from step 1 and remove the rubber plug from the access hole.

Insert a clip nut through the access hole and align it over the adjacent small hole.

Secure the top of the bracket with an 8mm hex bolt, lock washer and flat washer.

Repeat step 3 to secure the bottom of the bracket.



Step 6

Locate the fifth mounting tab from step 1.

Repeat step 5 to install the fourth and final bracket on the driver side of the vehicle.



Step 7

Carefully position the side bar onto the mounting brackets.

Ensure all the mount locations on the bottom of the side bar line up with the mounting brackets.

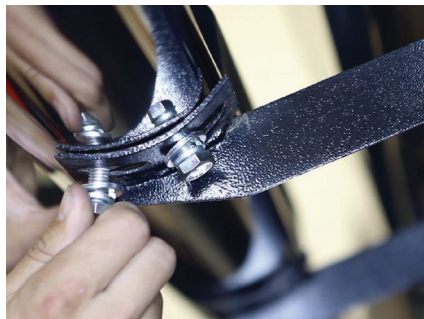
Note: If the holes on the side bar do not match up with the brackets, ensure all brackets have been installed in the correct locations and the correct side bar is being used.



Step 8

Attach the side bar to the brackets with eight of the 10mm hex bolts, lock washers and flat washers.

Snug the hardware, but do not fully tighten.



Step 9

Ensure the vehicle is on level ground.

Use a bubble level ensure the side bar is level and parallel with the side of the vehicle. Make adjustments to the bracket positions and rotate the side bar as necessary.

With the side bar aligned, tighten all the hardware on the brackets to the vehicle.

Double check that the side bar is level and finalize the install by tightening all the hardware securing it to the brackets.



Step 10

Repeat steps 1 through 9 on the passenger side.

Note: For diesel trucks, the front bracket on the passenger side will require the included def-tank brackets. Follow steps 11 through 16 to complete the install.



Step 11

2014 or older

2015 or newer

Locate the def-tank bracket components for diesel truck models.

Begin the install by locating the round factory hole in the bottom of the rocker panel, closest to the front bracket mounting location. The installation of the bracket will vary depending on the vehicle model shown to the right.

Remove the plastic plug to expose the mounting hole in the rocker panel.



Step 12

Insert the 10mm bolt plate into the access hole in the rocker panel.

Push the plastic retainer onto the threaded end of the bolt plate to help hold the plate in position.



Step 13

Select the def-tank L-bracket.

Attach the short end of the bracket to the bolt plate with the flat washer, lock washer and 10mm hex nut.

Snug the hardware, but do not fully tighten.



Step 14

Slide an 8mm clip nut onto the mounting tab. Fasten the side bar mounting bracket with an 8mm hex bolt, flat washer and lock washer.

Snug the hardware, but do not fully tighten.



Step 15

Bolt the def-tank support bracket to the back of the def-tank L-bracket using a 10mm hex bolt, flat washer and lock washer.

Snug the hardware, but do not fully tighten.



Step 16

Repeat steps 7 through 9 on the passenger side of the vehicle.

Congratulations on the installation of your new ARIES 4" oval side bars.

With the side bars installed, periodic inspections should be performed to ensure all mounting hardware remains tight.

To protect your investment, see the 'Notes and Maintenance' section on the first page of this instruction manual.

