



INSTALLATION MANUAL

S224048-2

Parts List

1	Driver / left side bar
1	Passenger / right side bar
4	Mounting bracket, universal
9	Clip nut, 8mm
9	Hex bolt, 8mm x 25mm
9	Flat washer, 8mm
9	Lock washer, 8mm
9	Hex bolt, 10mm
11	Flat washer, 10mm
10	Lock washer, 10mm
1	Bolt plate, 10mm
2	Hex nut, 10mm
1	Plastic bolt retainer
1	Def-tank L-bracket
1	Def-tank support bracket

Level of Difficulty

Easy



Scan for helpful install tips

Product Image



Notes and Maintenance

Before you begin installation, read all instructions thoroughly.

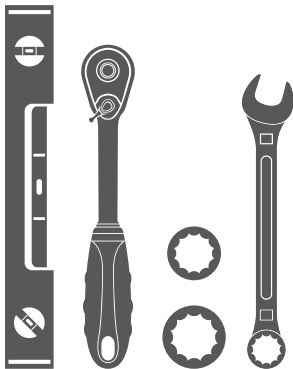
Proper tools will improve the quality of installation and reduce the time required.

To protect the product, wax after installing. Regular waxing is recommended to add a protective layer over the finish. Do not use any type of polish or wax that may contain abrasives that could damage the finish.

For stainless steel and aluminum, polish may be used to clear small scratches and scuffs on the finish. Mild soap may be used also to clean the product.

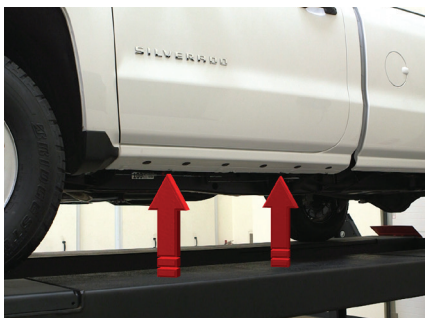
Tools Required

Ratchet	Socket, 16mm
Wrench, 16mm	Socket, 13mm
Level	



Step 1

Starting on the driver side, locate the two mounting locations underneath the vehicle.



Step 2

At the front driver-side mounting tab, locate the threaded hole on the inside of the body panel.

Place a mounting bracket onto the vehicle and secure with an 8mm hex bolt, 8mm lock washer and 8mm flat washer.

Snug the hardware, but do not fully tighten.



Step 3

Rotate the bottom of the bracket to the side to expose the hole in the mounting tab.

Slide an 8mm clip nut over the mounting tab and rotate the bracket back into position. Finish securing the bracket with an 8mm hex bolt, 8mm lock washer and 8mm flat washer.

Snug the hardware, but do not fully tighten.



Step 4

Repeat steps 2 and 3 to install the rear mounting bracket.



Step 5

Place the side bar onto the mounting brackets and align the mounting points.

Secure the side bar to the brackets using a 10mm hex bolt, lock washer and flat washer at each mounting location.

Snug the hardware, but do not fully tighten.



Step 6

Adjust and level the side bar.

With the side bar in position, it is recommended to tighten all brackets to the vehicle first, followed by the side bar connections.



Step 7

Repeat steps 1 through 6 on the passenger side.

Note: For diesel trucks, the front bracket on the passenger side will require the included def-tank brackets. Follow steps 8 through 13 to complete the install.



Step 8

2014 or older

2015 or newer

Locate the def-tank bracket components for diesel truck models.

Begin the install by locating the round factory hole in the bottom of the rocker panel, closest to the front bracket mounting location. The installation of the bracket will vary depending on the vehicle model shown to the right.

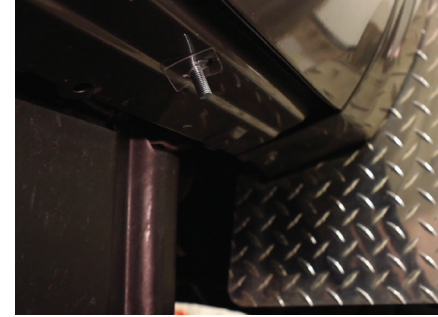
Remove the plastic plug to expose the mounting hole in the rocker panel.



Step 9

Insert the 10mm bolt plate into the access hole in the rocker panel.

Push the plastic retainer onto the threaded end of the bolt plate to help hold the plate in position.



Step 10

Select the def-tank L-bracket.

Attach the short end of the bracket to the bolt plate with the flat washer, lock washer and 10mm hex nut.

Snug the hardware, but do not fully tighten.



Step 11

Slide an 8mm clip nut onto the mounting tab. Fasten the side bar mounting bracket with an 8mm hex bolt, flat washer and lock washer.

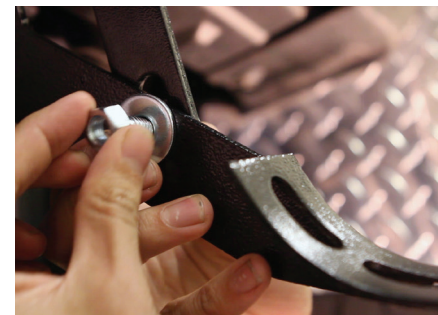
Snug the hardware, but do not fully tighten.



Step 12

Bolt the def-tank support bracket to the back of the def-tank L-bracket using a 10mm hex bolt, flat washer and lock washer.

Snug the hardware, but do not fully tighten.



Step 13

Repeat steps 5 and 6 on the passenger side of the vehicle.

Congratulations on the installation of your new ARIES 4" oval side bars.

With the side bars installed, periodic inspections should be performed to ensure all mounting hardware remains tight.

To protect your investment, see the 'Notes and Maintenance' section on the first page of this instruction manual.

