



PART NUMBER: **T102MRF**  
 PRODUCT: **Roof Racks**  
 APPLICATION: **10-16 Toyota 4 runner**

Parts Included:	Qty
Side rails	2
Front panel	1
Rear Panel	1
Cross rails	6
<b>Hardware Pack</b>	<b>1</b>
M8 Flanged nuts	8
Bracket assemblies	4
M6x16mm Button head	36
Nuts	36
Washers	36

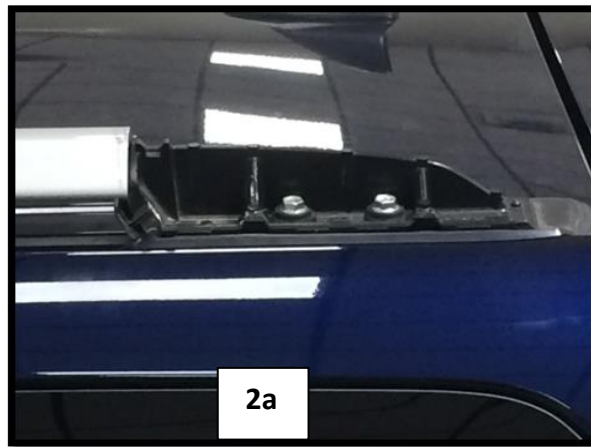


**( Maximum weight limit 125 lbs.)**

1. Check kit contents for damage.

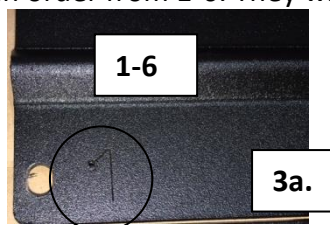
**2. VEHICLE PREPARATION**

a. With a panel tool, remove the two rear OE plastic rail covers and set aside. **(fig 2a)**



**3. ROOF RACK ASSEMBLY**

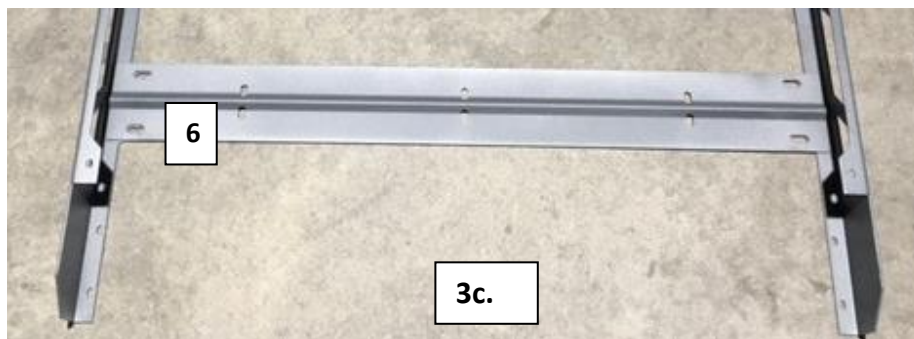
a. Identify the cross rails in order from 1-6. They will be numbered in the left hand corner of each rail. **(Fig.3**



**b.** Connect cross rail (#1) in the front position in between the side rails. Fasten with the supplied hardware and leave loose. **(fig. 3b)**

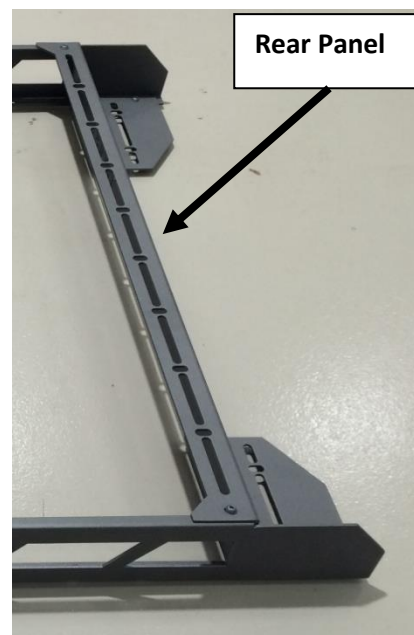
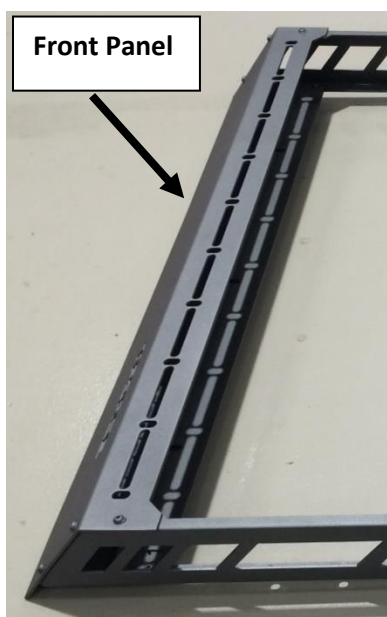


**c.** Next, connect cross rail (#6) into the rear location and leave loose. **(Fig.3c)**



**d.** Fully tighten cross rail #1

**e.** Connect the front and rear end panels and loosely tighten. **(fig. 3e)**



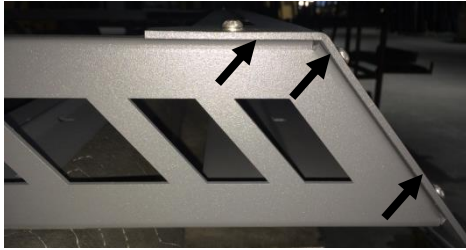
**3e.**



PART NUMBER: **T102MRF**  
PRODUCT: **Roof Racks**  
APPLICATION: **10-16 Toyota  
4 runner**

F. Attach panels #2-5 to complete the roof rack assembly and fasten loosely.

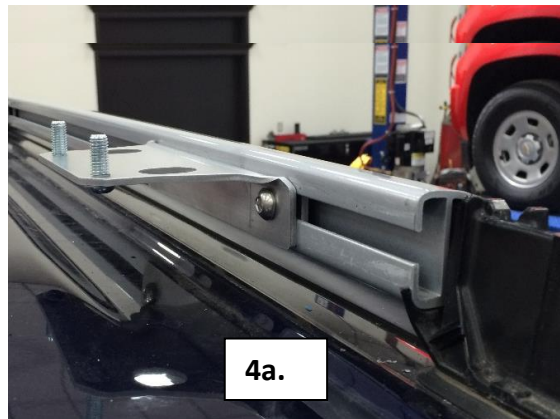
G. Check all four corners for proper alignment



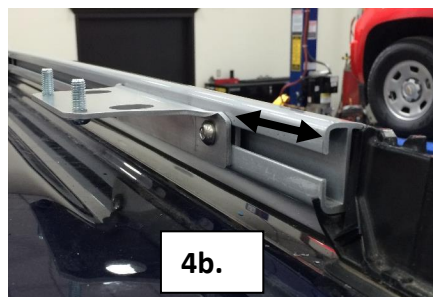
H. After final alignment, tighten all hardware.

#### 4. MOUNTING BRACKET INSTALLATION

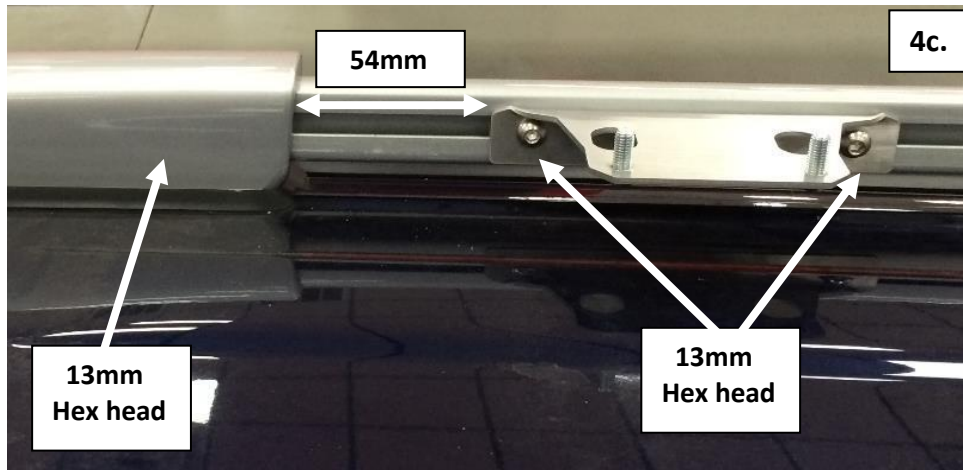
a. Slide two of the supplied bracket assemblies into the open end of the railing system and leave loose. (each side) **(fig.4a.)**



b. Slide rear Brackets approximately **36mm** from the rear railing opening and loosely tighten the 13mm hex bolts. **(fig.4b)**



c. Slide the **Front** brackets approximately **54mm** from the rear edge of the plastic rail cover to the edge of the bracket and loosely tighten the 13mm hex bolts. (**fig.4c**)

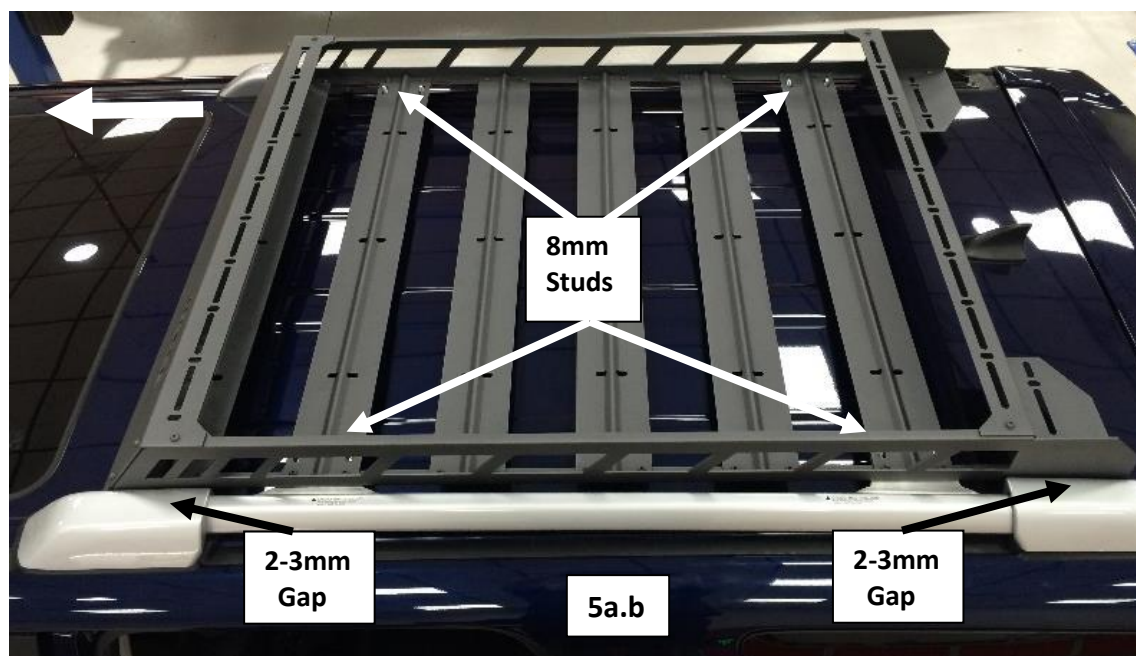


d. Re-install the two rear plastic rail covers at this time.

## 5. ROOF RACK INSTALLATION

a. Carefully lift roof rack into position aligning the slotted holes in the front and rear cross rails with the 8mm studs in each bracket assembly.

b. Check the gap in between the Rack and the OE plastic rail caps. The front should have approximately 2-3mm gap and the rear should have a 5-7mm gap. (**Fig.5a, b.**)





PART NUMBER: **T102MRF**

PRODUCT: **Roof Racks**

APPLICATION: **10-16 Toyota  
4 runner**

c. Use the (8) supplied M8 flanged nuts and secure to each 8mm stud and hand tighten.

#### **6. FINAL POSITION AND TORQUE.**

a. Use the cut outs in the rack with the OE rail as a reference point to help center. **(Fig.6a.)**



b. After final alignment, tighten all (4) bracket assemblies to 10 ft/lbs using a 13mm (2 bolts per bracket)

c. Tighten all (8) M8 flanged nuts to 10 ft/lbs using a 13mm socket.

**7.** Your install is now complete.