

## **Warranty and Disclaimer**

All XK Glow mounting brackets come with a Limited Lifetime structural warranty to the original purchaser. Within One year after the purchase date, the original buyer may return any XKGLOW products that have any finish imperfections due to a defect in materials or workmanship. Finish imperfections from impacts to the piece such as rock chips or abrasions will not be considered defective. Installation of this product must be performed by a licensed professional. Should the failure of the product be the result of damage occurring as a result of improper installation, alteration of the product or an act or omission on the part of the consumer, this warranty is void. XKGLOW Lighting shall not be responsible for any consequential damages which arise from the use and/or installation of the product. If the kit is installed in any manner other than specified, XKGLOW Lighting reserves the right to deny any warranty claims at the discretion of the technical support department. Any product return must include the original packaging, invoice number and a statement of the alleged defect. Upon receipt of the returned product, the company will test the product for defect. If the results of the testing do not support the warranty claim, do not reveal any defect or indicate consumer negligence in the installation and handling of the product, then the product will be returned to you and you will be charged a reshipping fee. If the product is returned from an address within the continental United States, within the first 30 days after purchase, and is found to be defective, XKGLOW Lighting will exchange or refund the original purchase expense. This offer does not extend to the cost for shipping charges on any international packages.

## **Additional Disclaimer Terms**

Please check your local and state laws for the proper use of this product.

- Improper installation of electrical products such as lighting may cause damage to any vehicle or device to which the improperly handled or installed lighting is attached.
- Improperly installed product may cause injury to persons.
- It is recommended that the kit should be installed by a licensed professional.
- XKGLOW assumes no liability for the installation of the product.
- Warranty or liability will not exceed the product purchase price, which shall be buyer's sole and exclusive remedy.

## **Return/Exchange Procedure**

1. Email [xk@xkglow.com] to notify us of the product issue as well as the item number and name of customer on invoice.
  2. We will send you the trouble-shooting guide to fix the issue, or to narrow down which of the component(s) need to be replaced. If the issue still exists, we will ask you to send back the defective items to be replaced.
  3. Please send the returned item as instructed, along with claims and a telephone number where you can be reached.
  4. After the returned item(s) have been accepted and inspected, we will issue a refund or replace the items ASAP. For refunds, item(s) must be sent to XKGLOW within 14 days from date of purchase. Original shipping charges are not refundable.
- We always stand behind our products and are committed to our customers! For questions you may have, please contact xkglow@gmail.com. We normally respond within 24 hours. (Monday-Friday).

## Installation Instructions

### 1. Open the Hood and remove the front grille

Begin by removing the 6 plastic push fasteners that run along the top of the grille shell (**Example 1**). Once removed grasp the top outer corners of the shell and pull straight forward and carefully remove the Grille (**Example 2**) and set aside.

Example 1



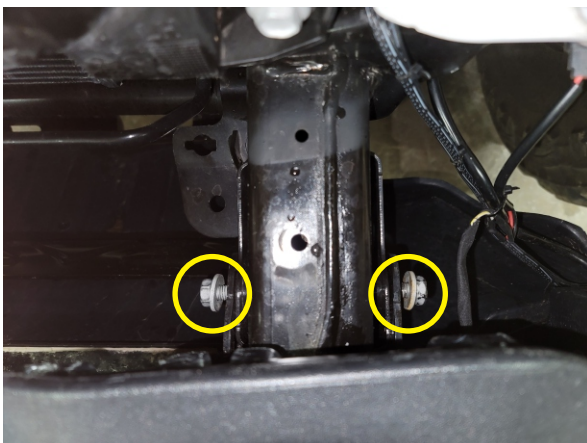
Example 2



### 2. Loosen front bumper bolts and install Frame Brackets

Once the front grille is removed you will find a 5/8" head bolt on each side of both frame rails directly behind the front bumper. Loosen these bolts enough to fit the bracket behind them as shown in **Example 3**. Once loosened install the included frame brackets and tighten bolts back down to factory specifications as shown in **Example 4**. Make sure the bracket is seated all the way down resting on the top of the frame rail.

Example 3



Example 4

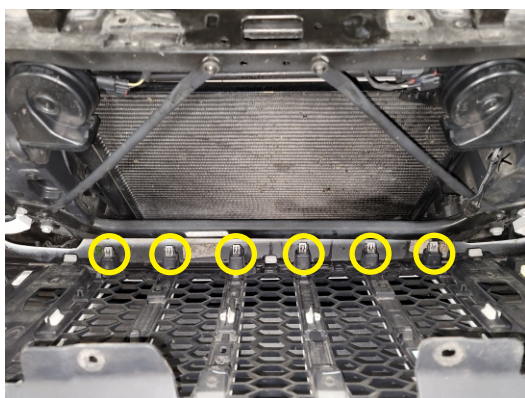


## Installation Instructions

### 3. Reinstall The front Grill

After tightening frame brackets it is time to reinstall the grille. Line the grille up using the bottom row of clips as shown in **Example 5**. Once lined up push the grill into place and reinstall the 6 plastic push connectors as shown in **Example 6** that were removed in step 1. Make sure that the grill is fully seated by pushing in around the whole outer surface of the grille shell.

**Example 5**



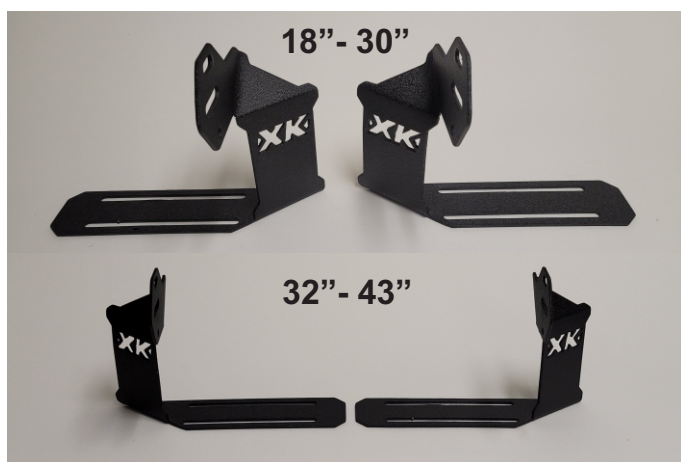
**Example 6**



### 4. Installing the light bar brackets

After the front grille is installed it is time to install the adjustable light bar brackets. The brackets can be used 2 different ways to have the ability to mount light bars from 18"-30" or 32"-42" as shown in **Example 7**. Once you have decided which way you will be running the mounts slide the mounts in from the outside edge of the vehicle behind the bumper and secure them at the desired width using the 4 - 1/4" Stainless fasteners as shown in **Example 8**.

**Example 7**



**Example 8**



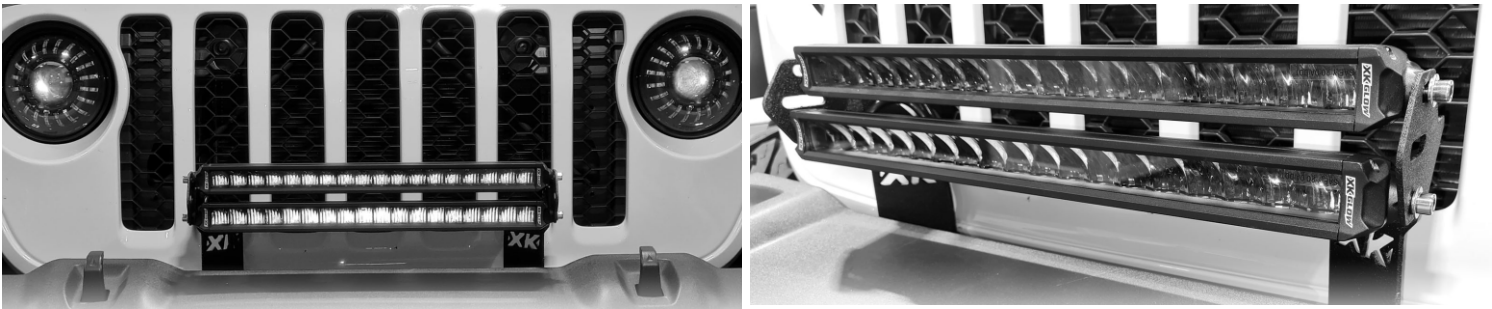


## Installation Instructions

### 5. Lightbar Installation options

When using our front bumper brackets the light bars can be set up in multiple variants. In **Example 9** You can see that not only are the brackets setup in the position to run 18"-30" light bars but the are also accomodating double stacked bars. Any bar that is 2" or less in height can be stacked using the mounts in this position.

#### Example 9



The brackets can also be reversed and used for light bar sizes 32"-42" as shown in **Example 10**. The mounting brackets can accommodate double stacking in this configuration as well of any bar 2" or less in height.

#### Example 10

