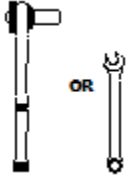


IMPORTANT:

Manufacturer is not responsible for negligent use of vehicle with mud flaps installed, including over-tightening of screws and bolts causing damage to vehicle or mud flaps.



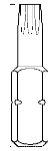
TOOLS REQUIRED-



1/4", 3/8", 5/16" and 9/32"
Open or Socket Wrenches



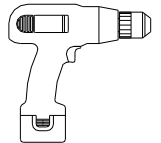
Phillips
Bit



T15 Torx
Bit



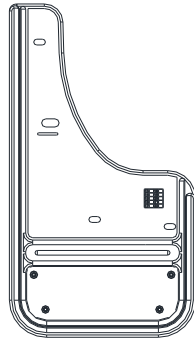
1/4" Drill
Bit



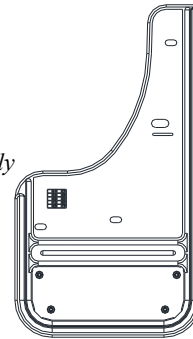
Electric or Rechargeable
Drill

FLAPS

(1) Flap Assembly,
Front, DS



(1) Flap Assembly
Front, PS



PARTS BAG #771028

a) (2) Machine Screw
10-24 x 1", SS, Blk Ox.
Part #012050



b) (2) Capscrew
1/4-20 x 5/8", SS, Blk Ox.
Part #014071



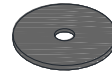
c) (4) Sheet Metal Screw
8-18 x 1.25", SS, Blk Ox.
Part #016061



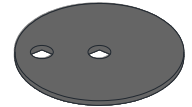
d) (2) Spacer Washer, HDPE
5/16" x 1" x 1/4"
Part #018036



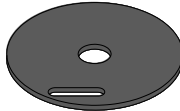
e) (4) Washer, Flat
0.203" x 1", SS, Blk Ox.
Part # 018070



f) (4) Washer, Offset
0.203" x 1.5", SS, Blk Ox.
Part # 018080



g) (2) Washer, Slotted
0.281" x 1.5", SS, Blk Ox.
Part #018084



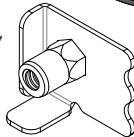
h) (2) Lock Washer
#10 Helicoil, SS
Part #024001



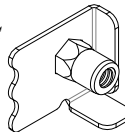
i) (2) Hex Nut
#10-24, SS
Part #025003



j) (1) Mount Clip, SS
Driver Side
Part # 769312



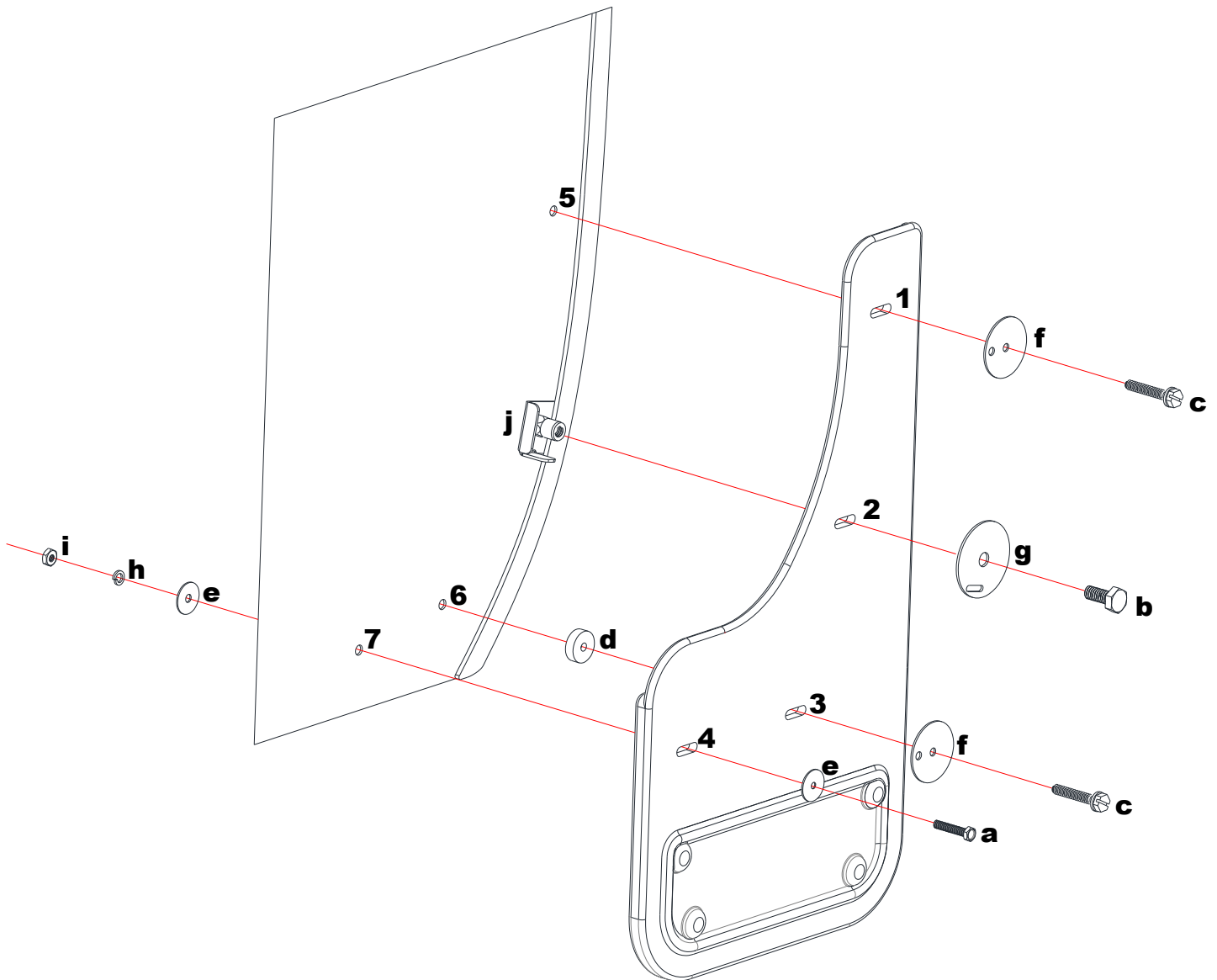
k) (1) Mount Clip, SS
Passenger Side
Part #76931



INSTALLATION (For ease of installation it is suggested that the wheel be removed)

1. Before you install your Mud Flap Set, see the diagram and parts list for all necessary parts. Start on the driver's side.
2. Remove the 2 factory screws from the wheel facing side and 2 factory screws from the underside of the fender that hold the factory guard in place. Set aside the 2 from underneath for later reinstallation.

3. Remove the factory guard.
4. Loosely install mount clip (j) to mudflap hole #2 using a capscrew (b) and slotted washer (g).
5. Loosely install mud flap hole #3 to factory hole #6 using a sheet metal screw (c) and offset washer (f), placing a spacer washer (d) between the mud flap and the liner.
6. Slide mount clip (j) behind fender lip.
7. Loosely install mud flap hole #1 to factory hole #5 using a sheet metal screw (c) and offset washer (f).
8. Using a bubble level or square, ensure that the mud flap is level. Viewing the vehicle from the back, the outer edge of the mud flap should appear parallel to the tire.
9. Tighten all fasteners.
10. Using a ¼" drill bit, drill a hole through the liner using mud flap hole #4 as a guide.
11. Secure mud flap hole #4 through the newly drilled hole #7 using a machine screw (a) and flat washer (e) and secure at the back using a flat washer (e), lock washer (h), and hex nut (i)
12. Reinstall factory hardware on the underside of the fender and carefully tighten all fasteners while ensuring that the flap remains level. We suggest doing this by hand to avoid overtightening the fasteners.
13. Repeat procedure for the passenger side.



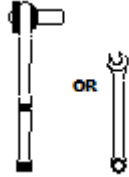
Please check out our YouTube channel to see an install video for this application.



IMPORTANT:

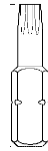
Manufacturer is not responsible for negligent use of vehicle with mud flaps installed, including over-tightening of screws and bolts causing damage to vehicle or mud flaps.

TOOLS REQUIRED-



1/4", 7/16" and 9/32"
Open or Socket Wrench

OR



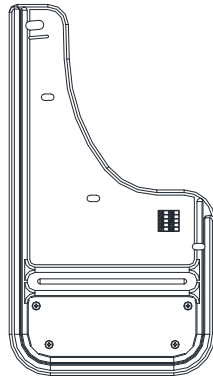
T15 Torx
Bit



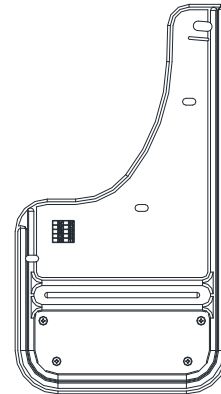
Phillips
Bit

FLAPS

(1) Flap Assembly,
Rear, DS



(1) Flap Assembly
Rear, PS



PARTS BAG #771029

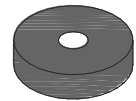
a) (2) Capscrew
1/4-20 x 5/8", SS, Blk Ox.
Part #014071



b) (6) Sheet Metal Screw
8-18 x 1.25", SS, Blk Ox.
Part #016061



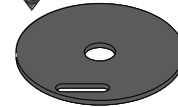
c) (6) Spacer Washer, HDPE
5/16" x 1" x 1/4"
Part #018036



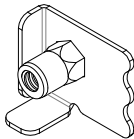
d) (6) Washer, Offset
0.203" x 1.5", SS, Blk Ox.
Part #018080



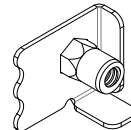
e) (2) Slotted Washer
0.281" x 1.5" SS, Blk Ox.
Part #018084



f) (1) Mud Flap Clip
DS
Part #769312



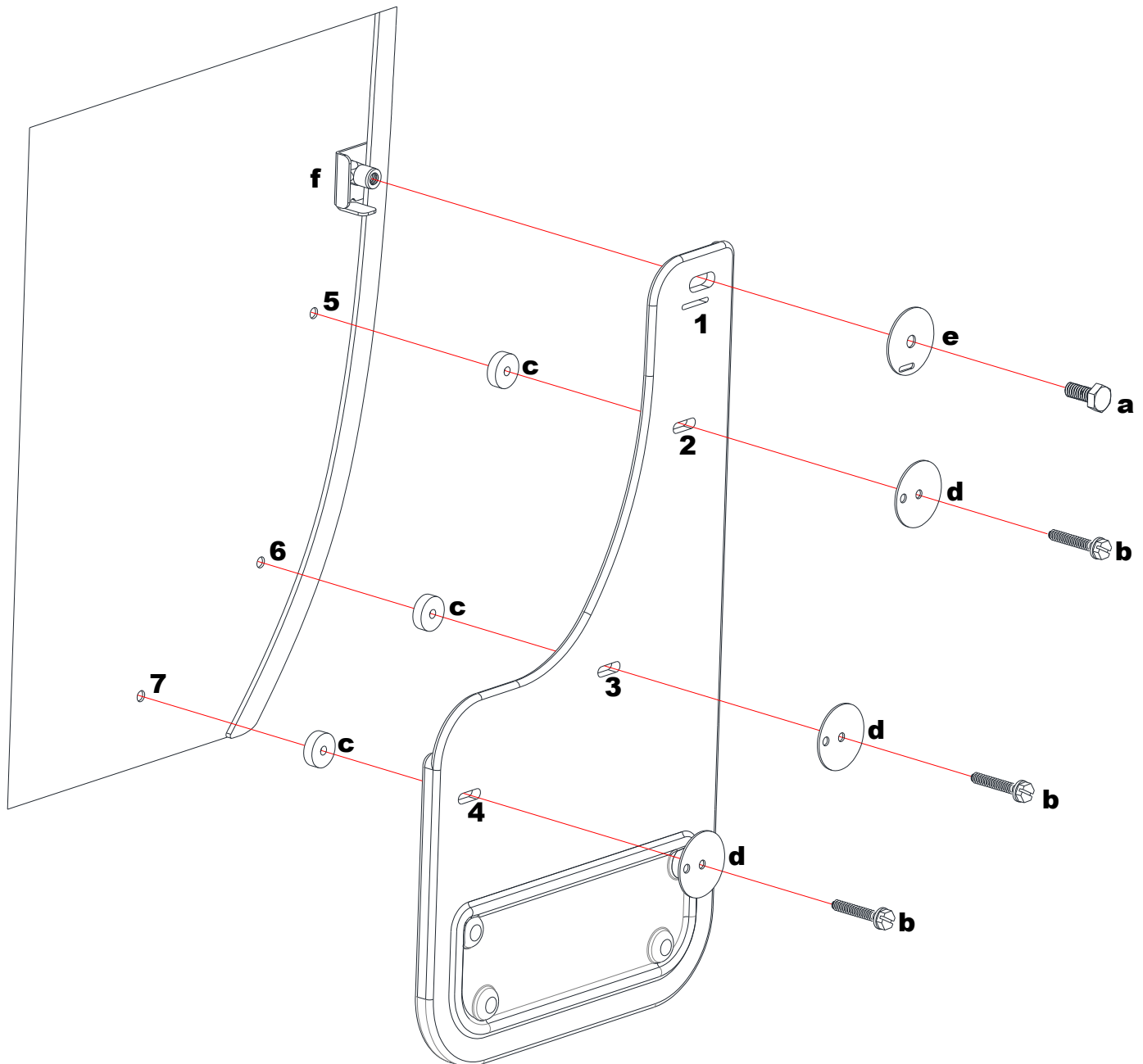
g) (1) Mud Flap Clip
PS
Part #769313



INSTALLATION (For ease of installation it is suggested that the wheel be removed)

- Before you install your Mud Flap Set, see the diagram and parts list for all necessary parts. Start on the driver's side.
- Remove the 3 factory screws from holes #5 to #7 and 2 factory screws from the underside of the fender that hold the factory guard in place. Set aside the 2 from underneath for later reinstallation.

3. Loosely install mud flap clip (f) on mud flap hole #1 using a capscrew (a) and slotted washer (e)
4. Loosely install mud flap hole #3 to factory hole #6 using a sheet metal screw (b), and flat washer (d), placing a spacer washer (c) between the flap and the wheel well.
5. Slide the mud flap clip (f) behind the fender lip.
5. Loosely install mud flap holes #2 & #4 to factory holes #5 & #7 using a sheet metal screw (b) and flat washer (d), placing a spacer washer (c) between the flap and the wheel well.
6. Using a bubble level or square, ensure that the mud flap is level. Viewing the vehicle from the back, the outer edge of the mud flap should appear parallel to the tires.
7. Reinstall factory hardware on the underside of the fender and then carefully tighten all fasteners while ensuring that the flap has remained level. We suggest doing this by hand to avoid overtightening the fasteners.
8. Repeat procedure for the passenger side.



Please check out our YouTube channel to see an install video for this application.

